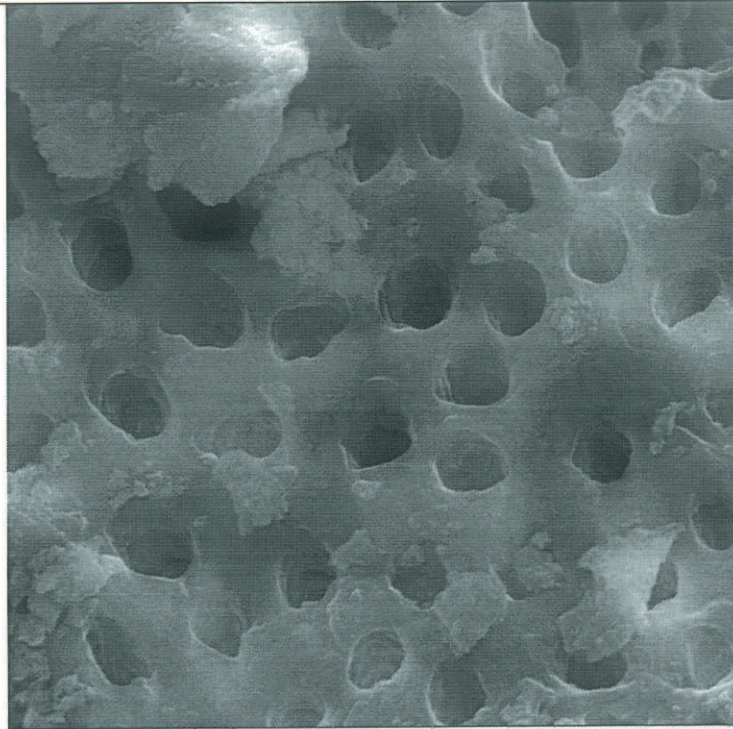
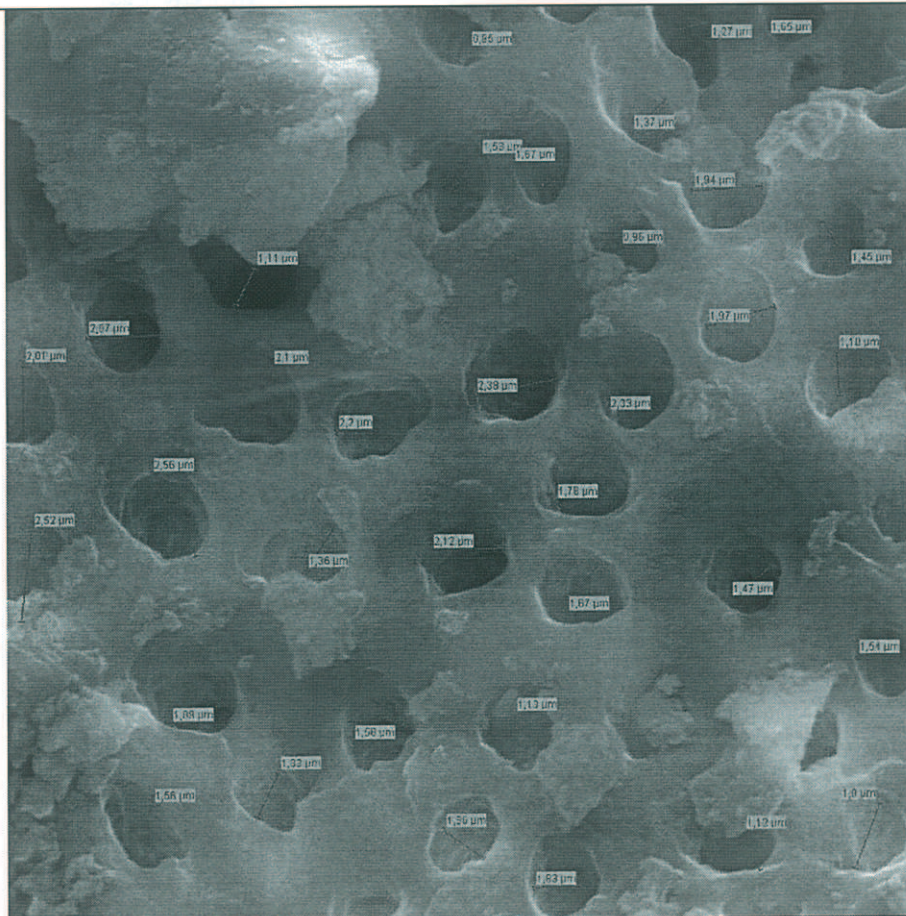


**DIENTE # 15
TERCIO MEDIO**



Mag	WD	HV	Det	
3000 x	15 mm	20 kV	SE	

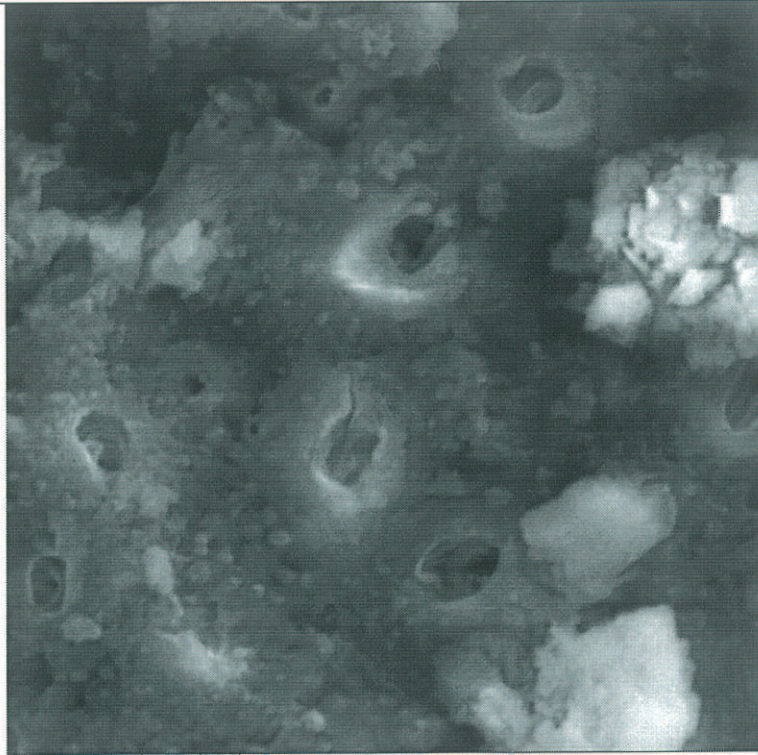
— 5 μ m —



Mag	WD	HV	Det	
3000 x	15 mm	20 kV	SE	

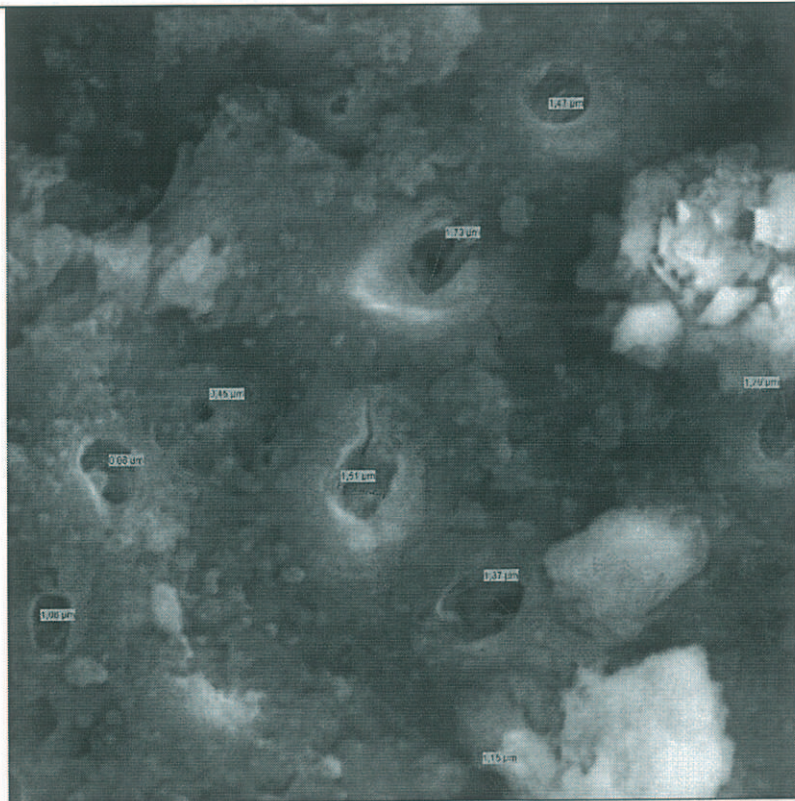
— 5 μ m —

**DIENTE # 15
TERCIO APICAL**



Mag	WD	HV	Det
3000 x	15 mm	20 kV	SE

5 μ m

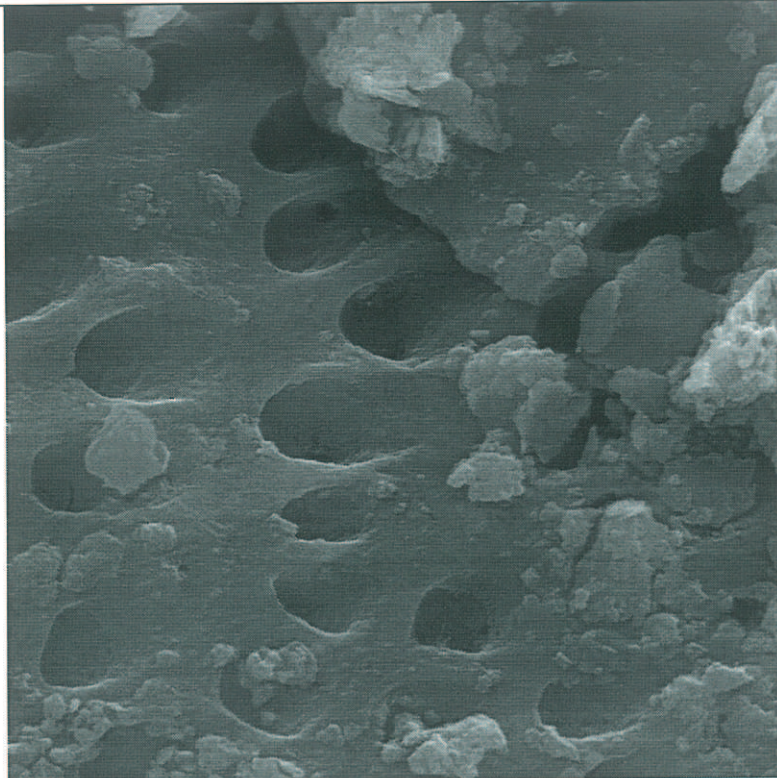


Mag	WD	HV	Det
3000 x	15 mm	20 kV	SE

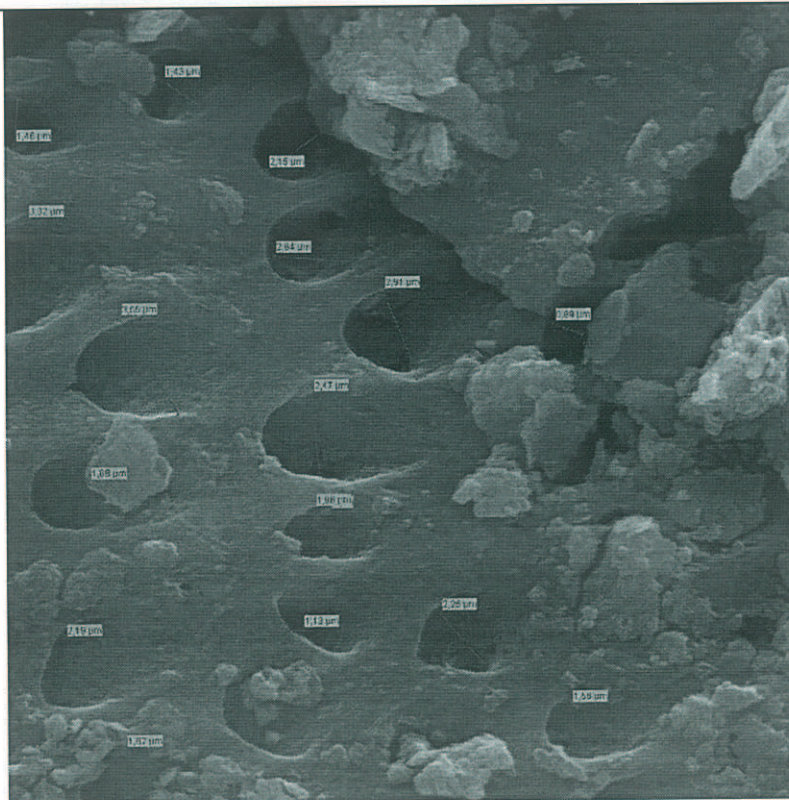
5 μ m

GRUPO D MTAD POR 1 MINUTO

DIENTE # 16
TERCIO CERVICAL

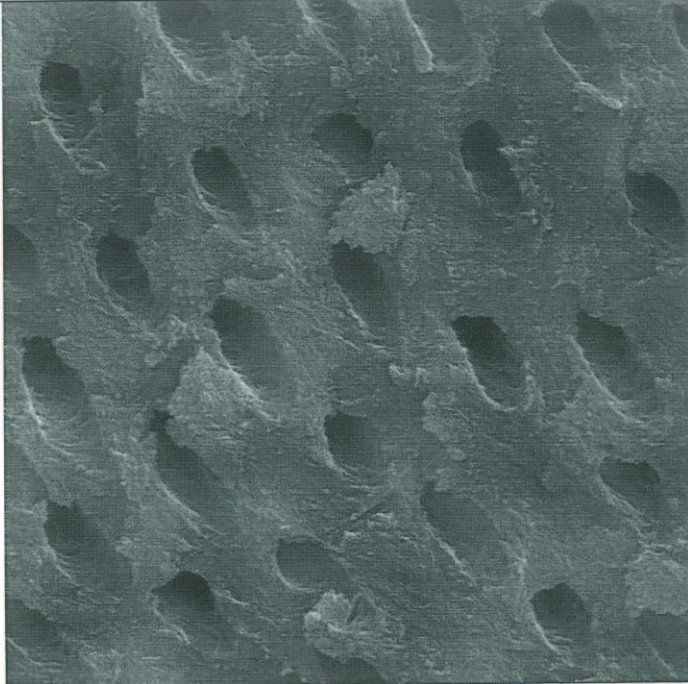


Mag	WD	HV	Det	
3000 x	15 mm	20 kV	SE	5 μm



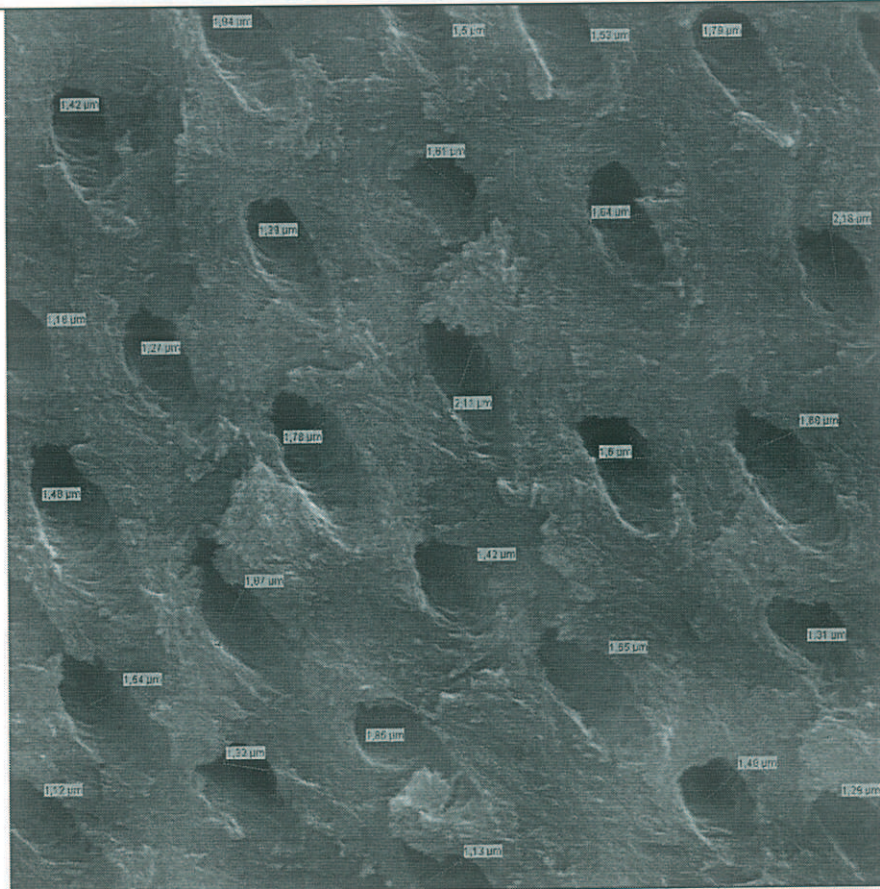
Mag	WD	HV	Det	
3000 x	15 mm	20 kV	SE	5 μm

**DIENTE # 16
TERCIO MEDIO**



Mag	WD	HV	Det
3000 x	15 mm	20 kV	SE

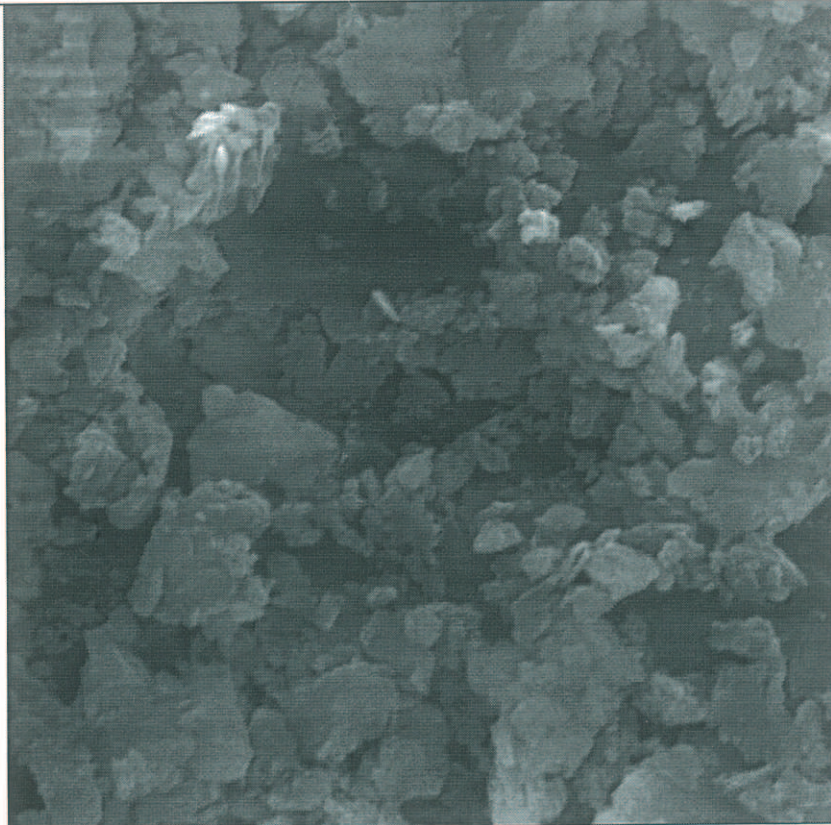
5 μ m



Mag	WD	HV	Det
3000 x	15 mm	20 kV	SE

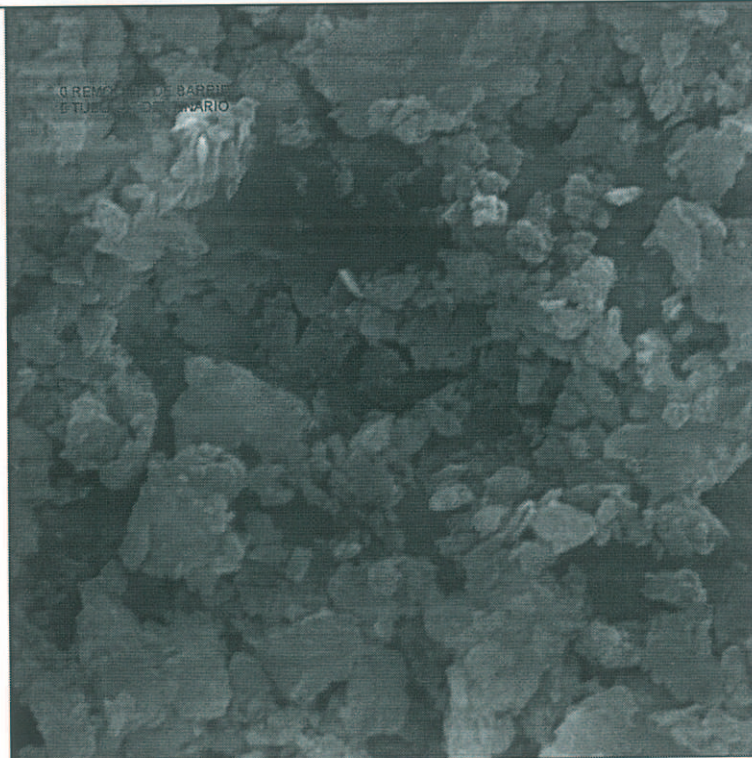
5 μ m

**DIENTE # 16
TERCIO APICAL**



Mag	WD	HV	Det
3000 x	15 mm	20 kV	SE

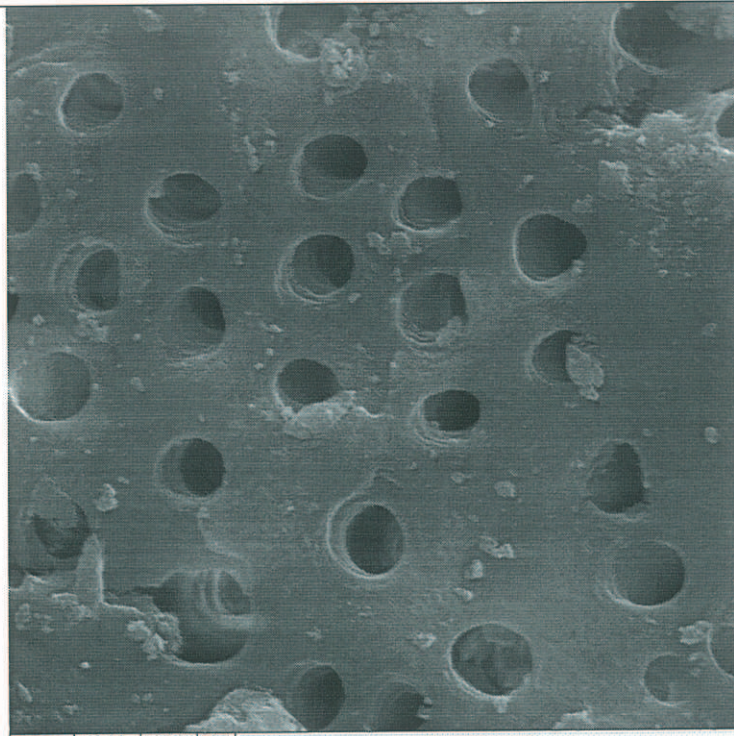
5 μm



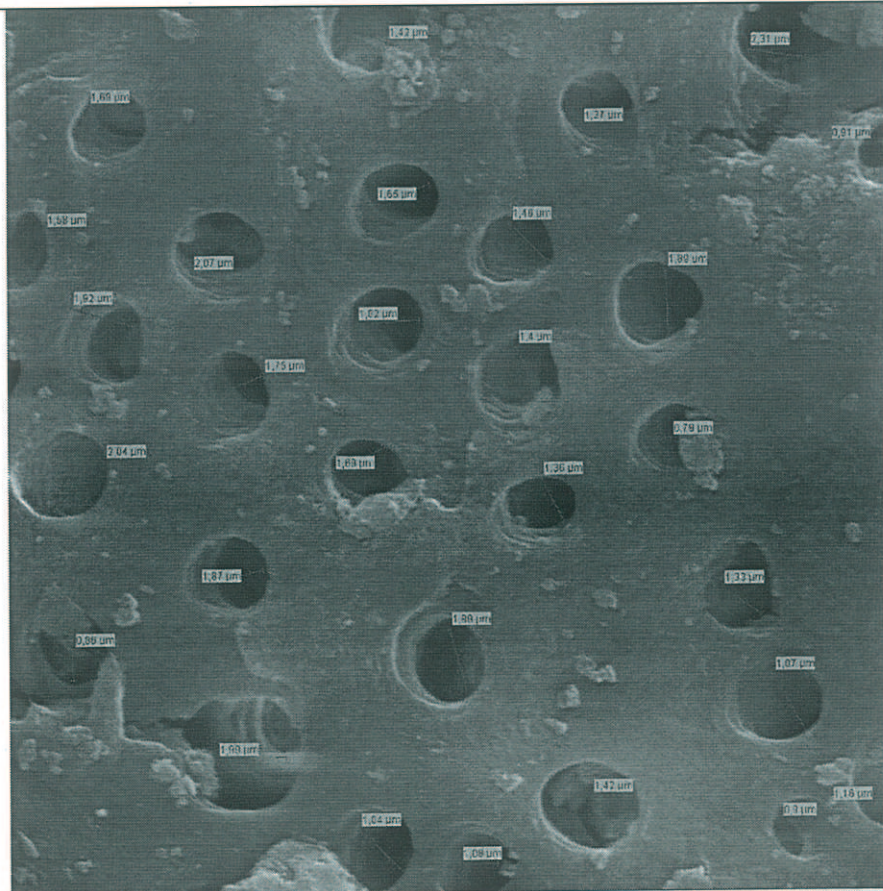
Mag	WD	HV	Det
3000 x	15 mm	20 kV	SE

5 μm

**DIENTE # 17
TERCIO CERVICAL**

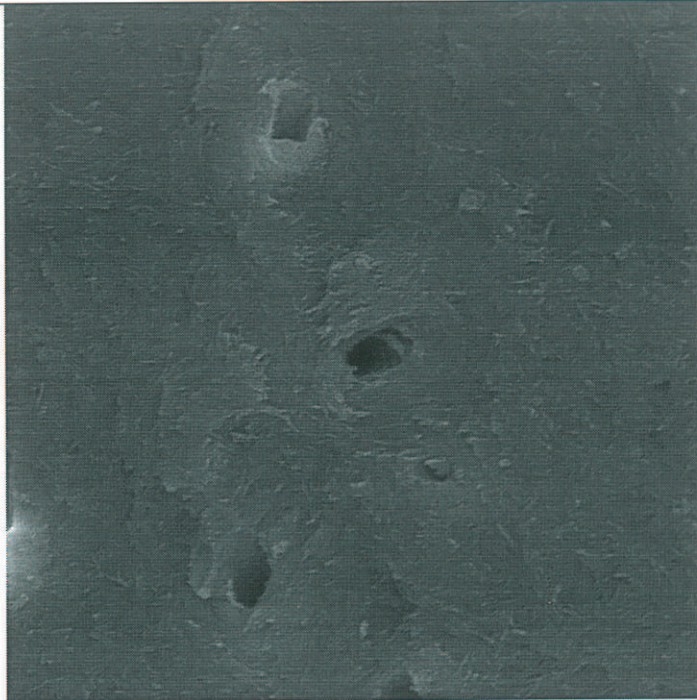


Mag	WD	HV	Det	
3000 x	15 mm	20 kV	SE	5 µm

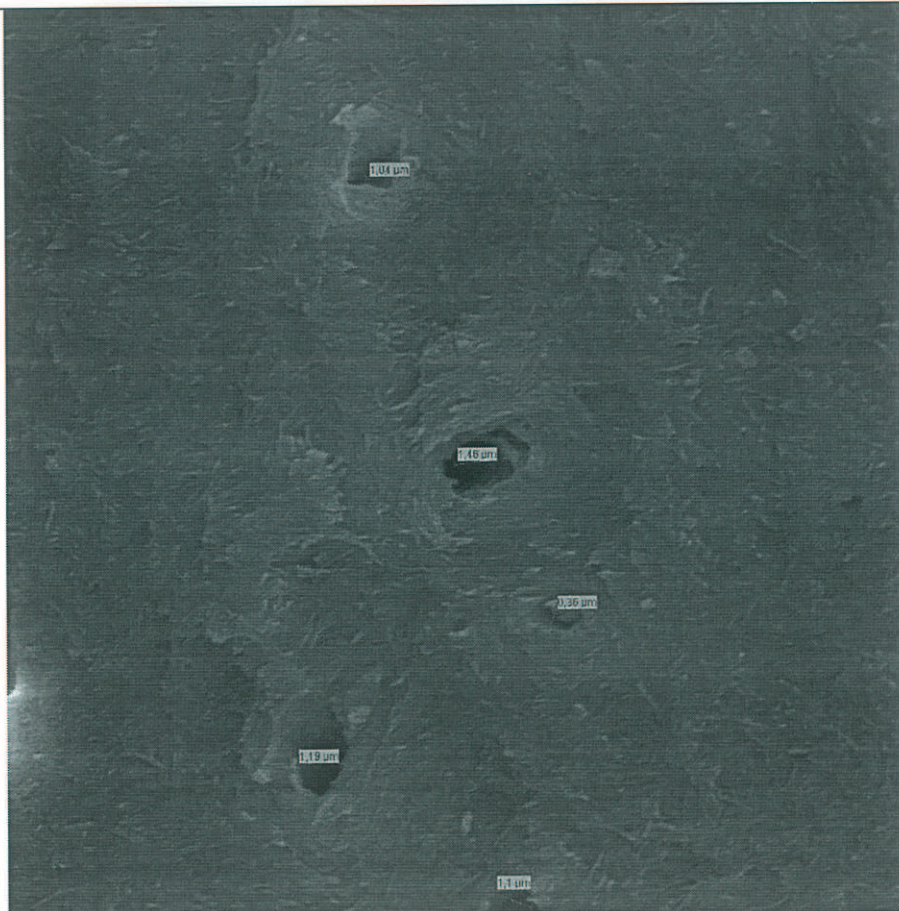


Mag	WD	HV	Det	
3000 x	15 mm	20 kV	SE	5 µm

**DIENTE # 17
TERCIO MEDIO**

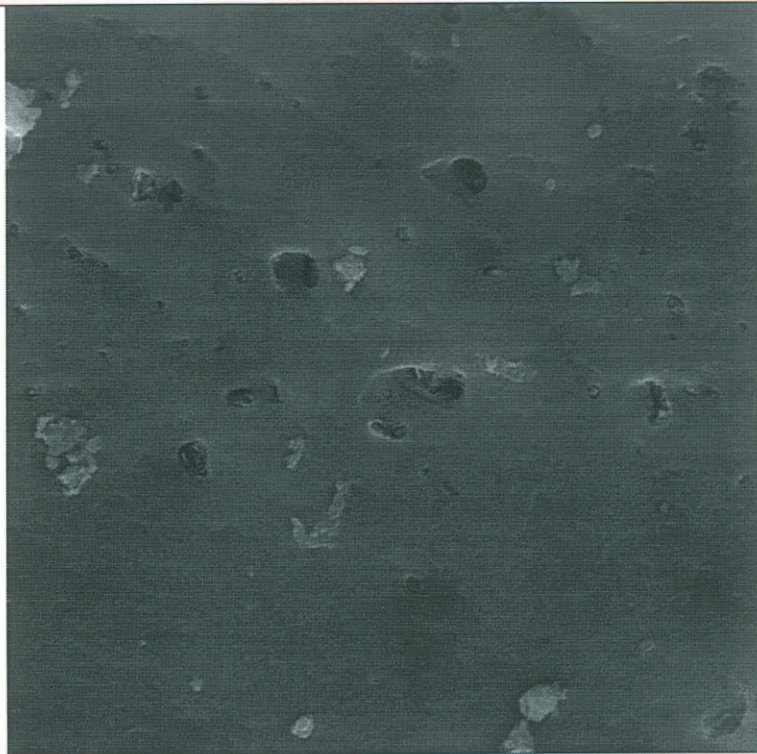


Mag	WD	HV	Det	
3000 x	15 mm	20 kV	SE	5 μ m

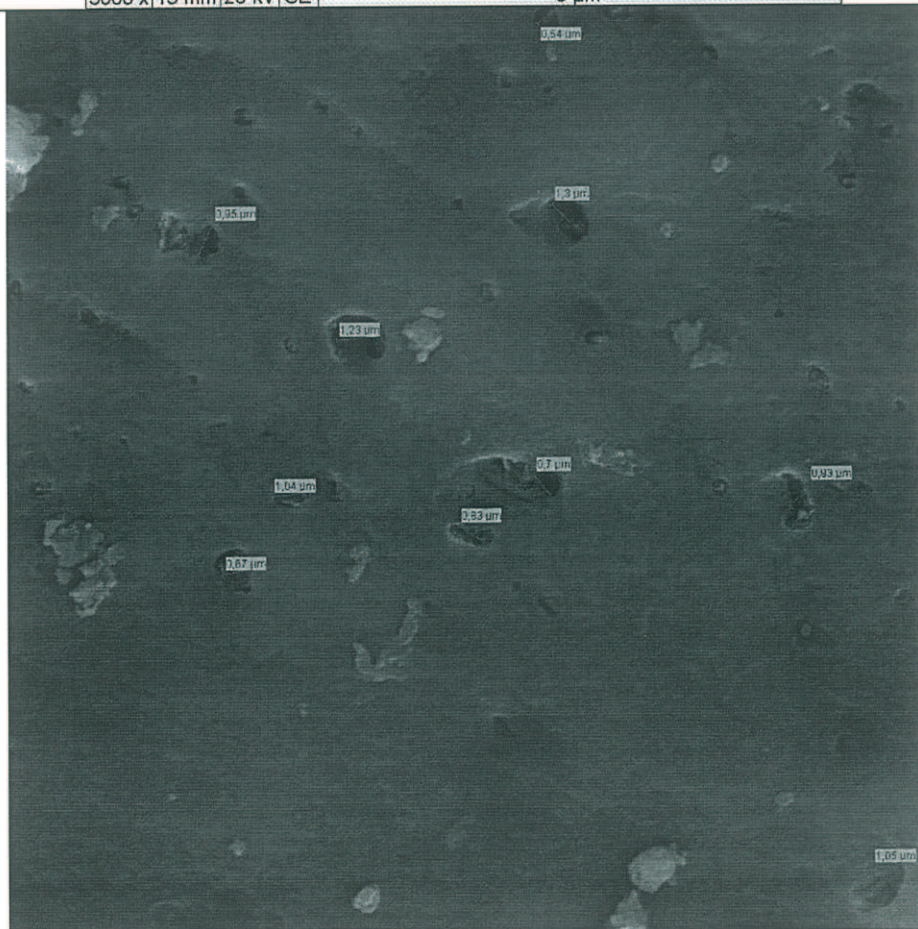


Mag	WD	HV	Det	
3000 x	15 mm	20 kV	SE	5 μ m

**DIENTE # 17
TERCIO APICAL**

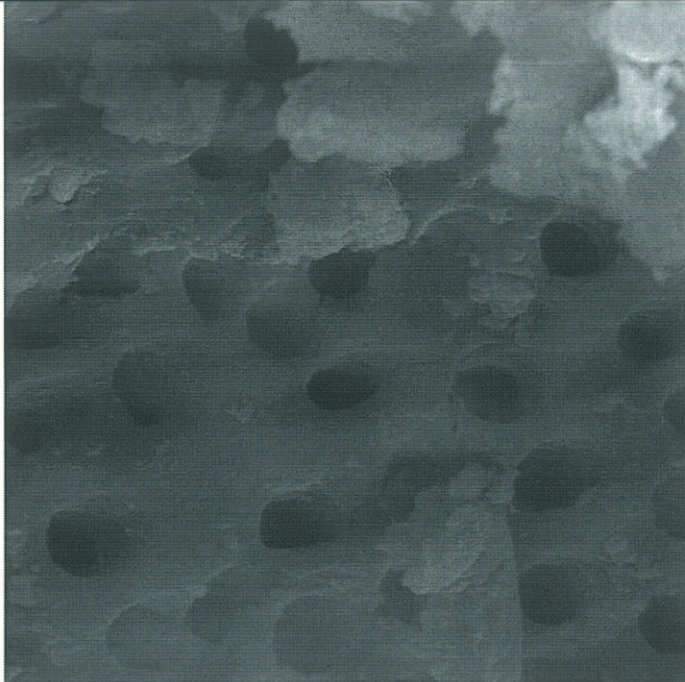


Mag	WD	HV	Det	
3000 x	15 mm	20 kV	SE	5 μ m



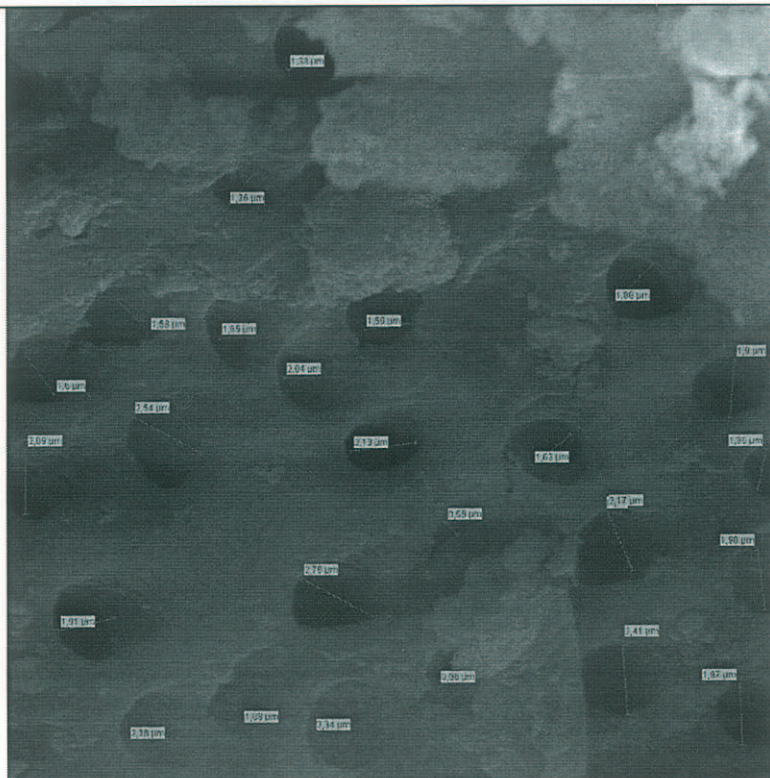
Mag	WD	HV	Det	
3000 x	15 mm	20 kV	SE	5 μ m

**DIENTE # 18
TERCIO CERVICAL**



Mag	WD	HV	Det
3000 x	15 mm	20 kV	SE

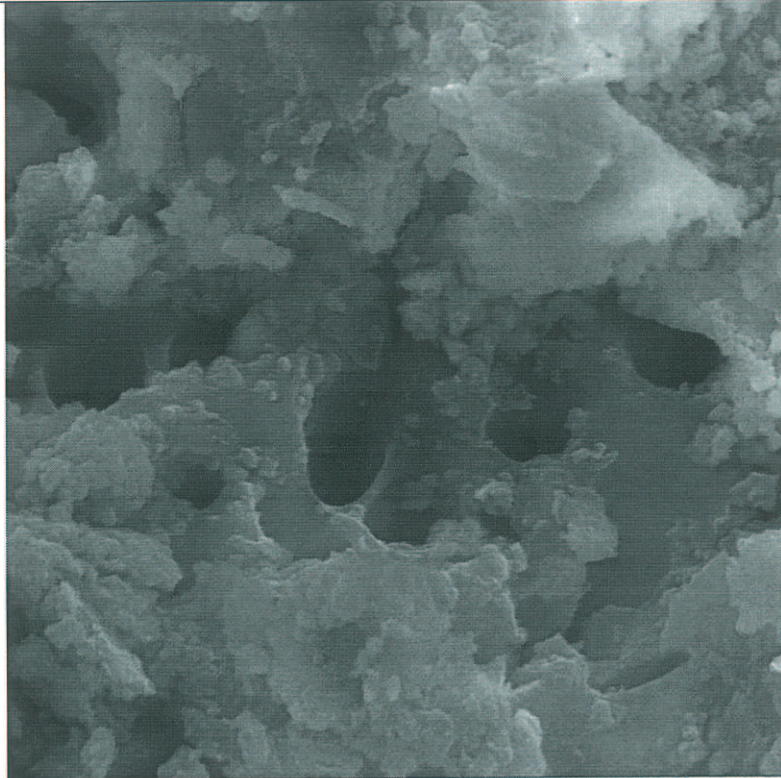
—5 μm—



Mag	WD	HV	Det
3000 x	15 mm	20 kV	SE

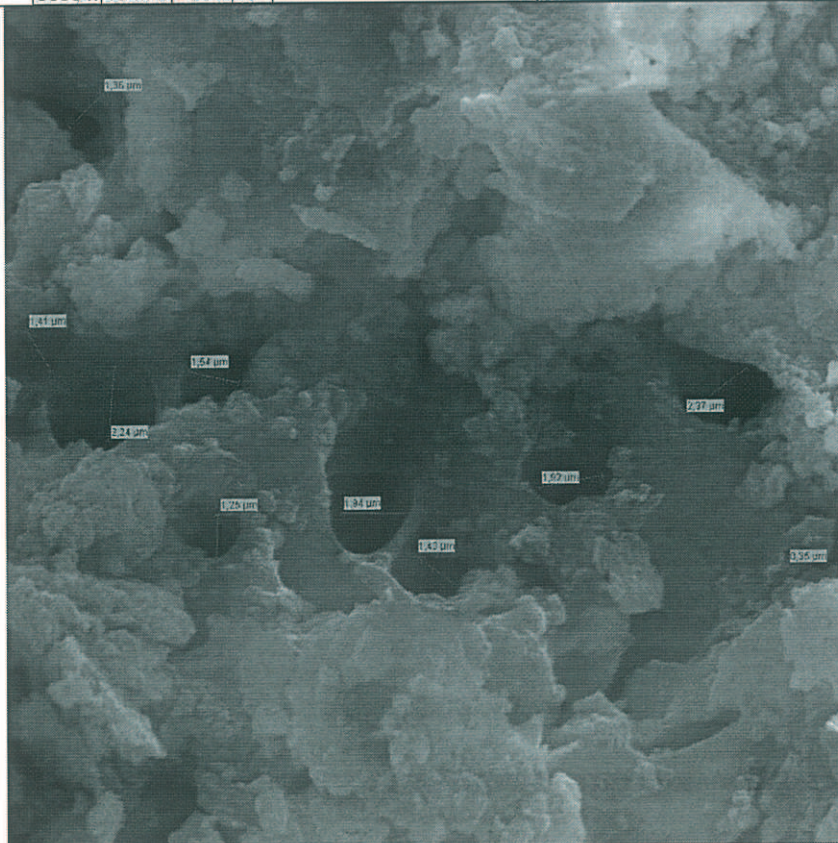
—5 μm—

**DIENTE # 18
TERCIO MEDIO**



Mag	WD	HV	Det
3000 x	15 mm	20 kV	SE

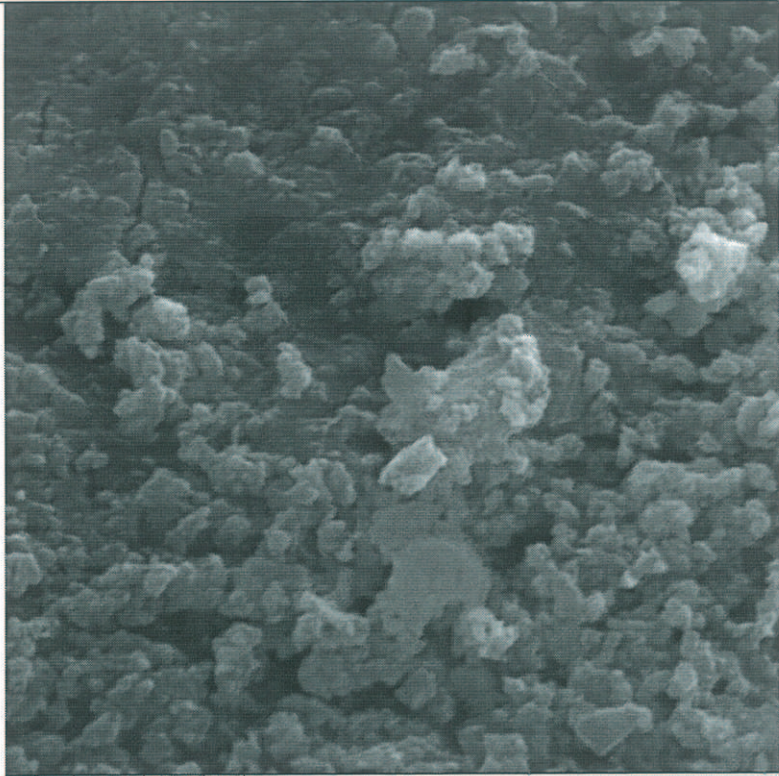
5 μ m



Mag	WD	HV	Det
3000 x	15 mm	20 kV	SE

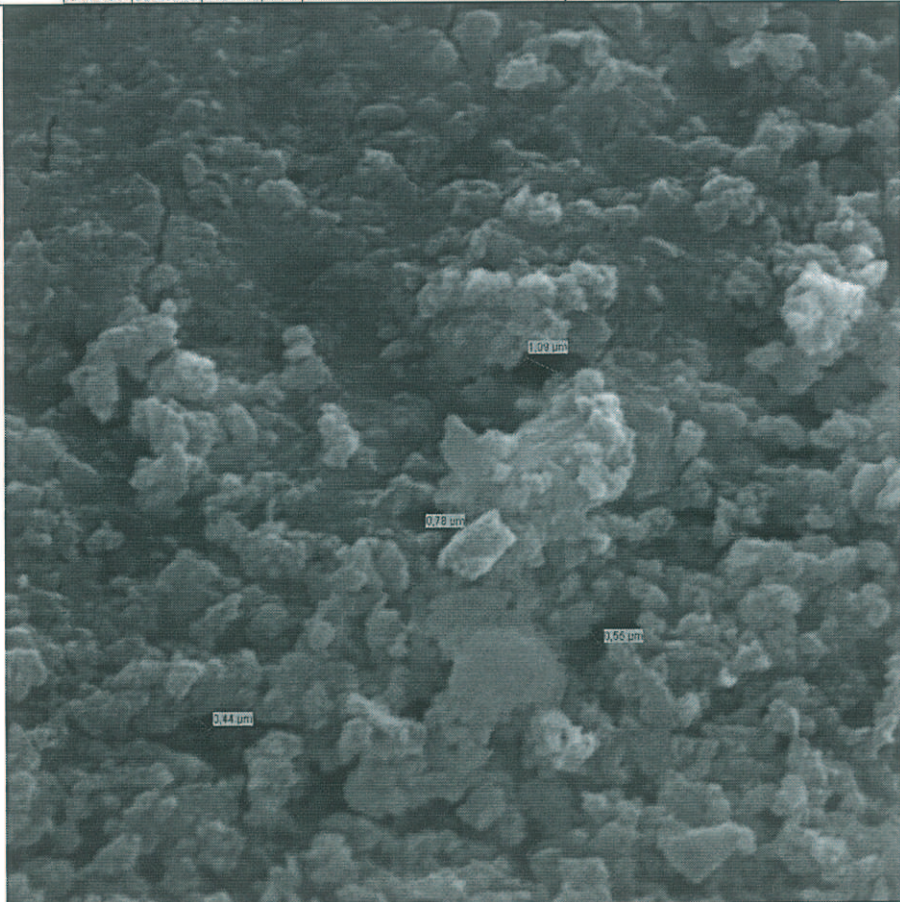
5 μ m

**DIENTE # 18
TERCIO APICAL**



Mag	WD	HV	Det
3000 x	15 mm	20 kV	SE

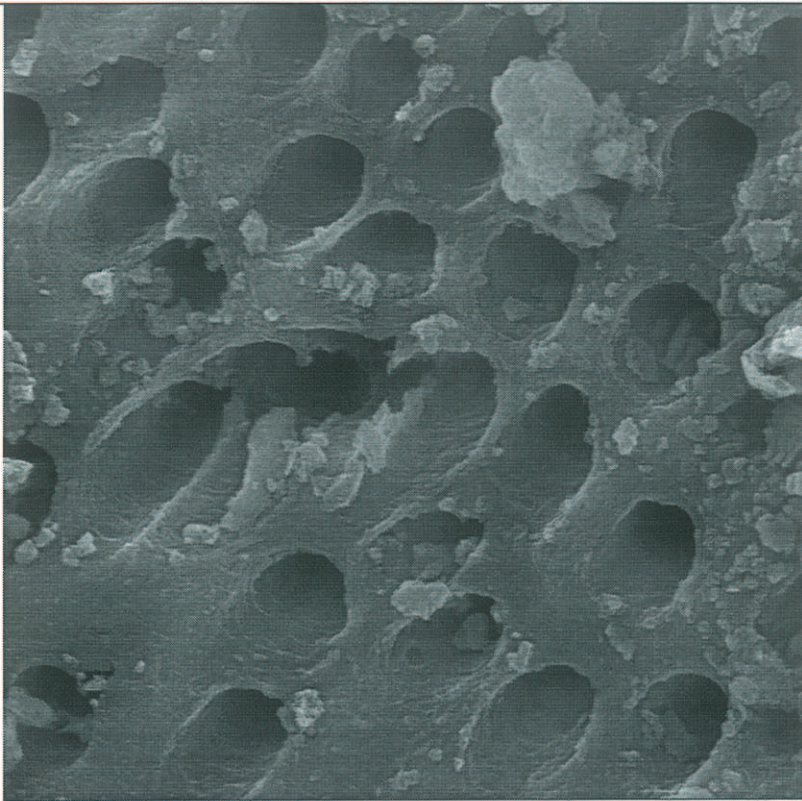
5 μ m



Mag	WD	HV	Det
3000 x	15 mm	20 kV	SE

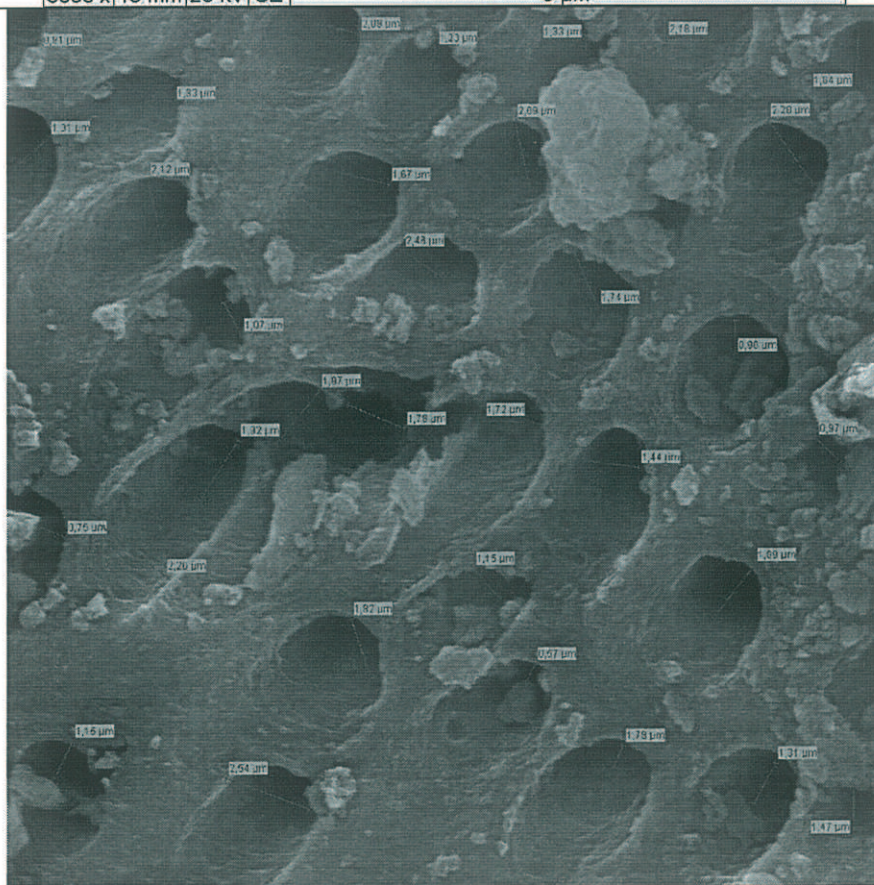
5 μ m

DIENTE #19
TERCIO CERVICAL



Mag	WD	HV	Det
3000 x	15 mm	20 kV	SE

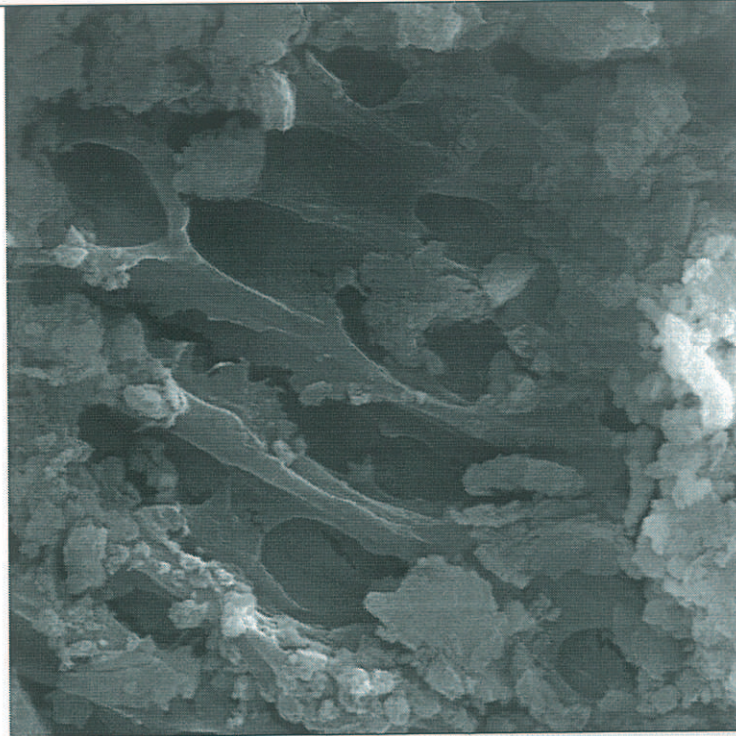
5 μ m



Mag	WD	HV	Det
3000 x	15 mm	20 kV	SE

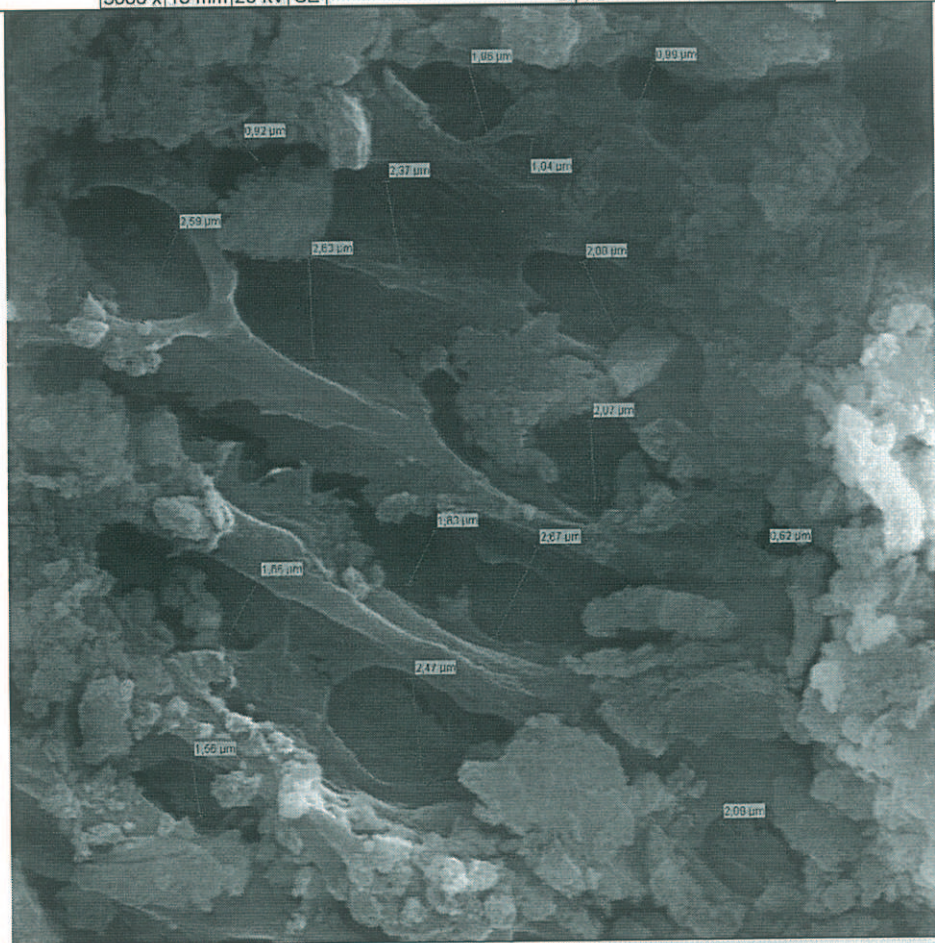
5 μ m

**DIENTE #19
TERCIO MEDIO**



Mag	WD	HV	Det
3000 x	15 mm	20 kV	SE

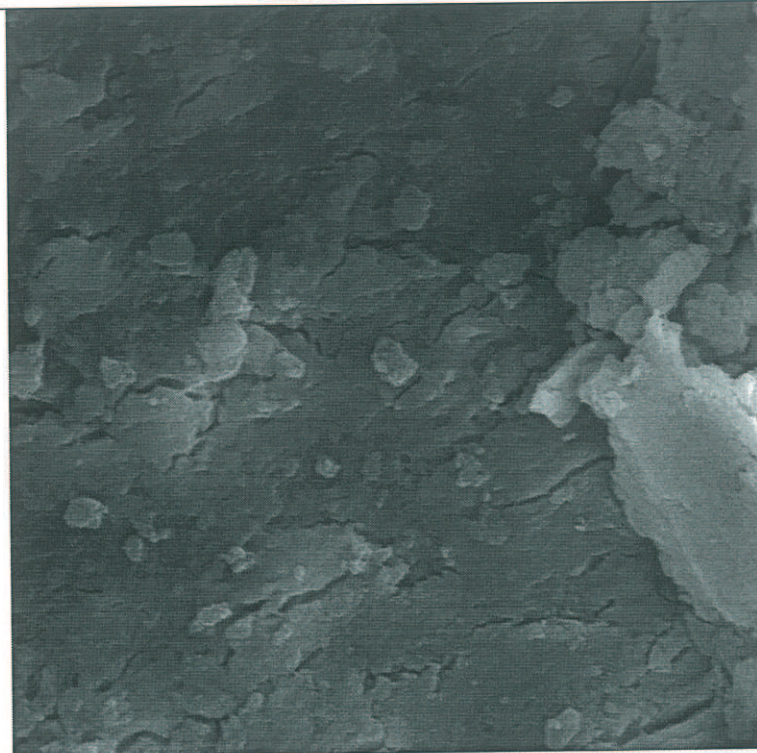
5 μ m



Mag	WD	HV	Det
3000 x	15 mm	20 kV	SE

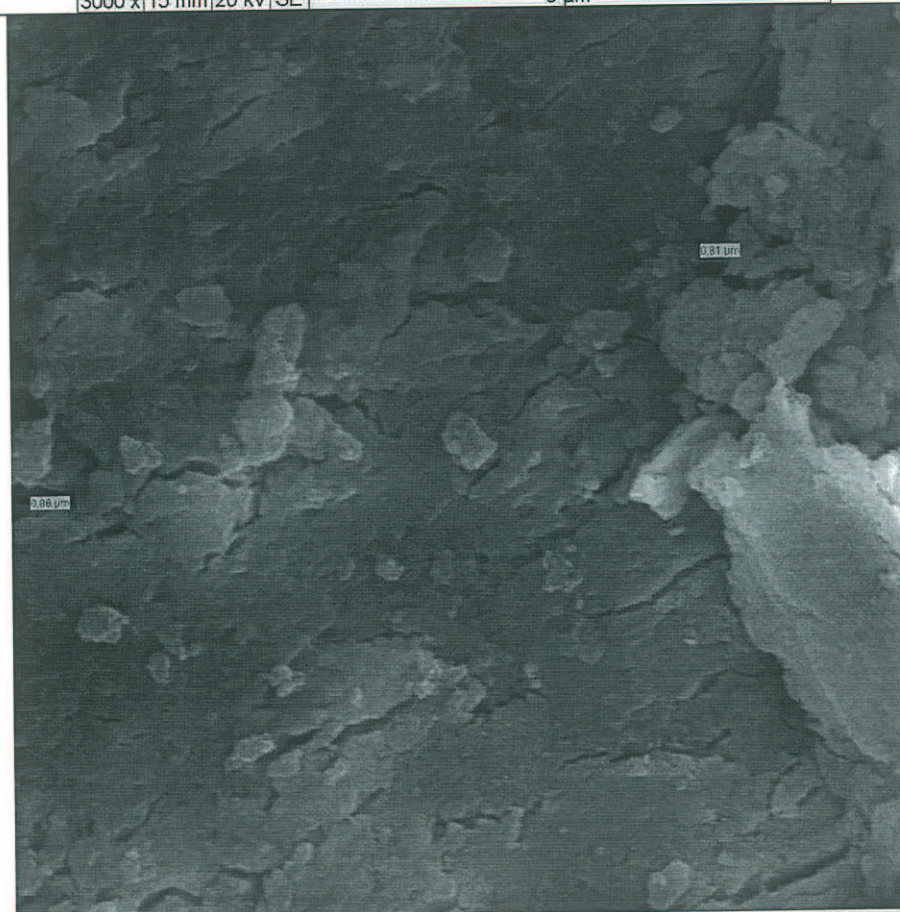
5 μ m

DIENTE # 19
TERCIO APICAL



Mag	WD	HV	Det
3000 x	15 mm	20 kV	SE

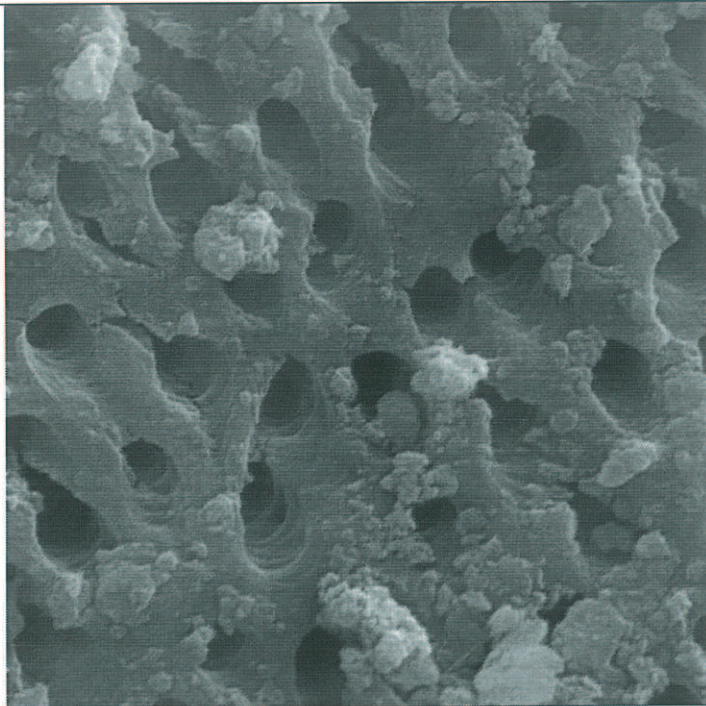
— 5 μ m —



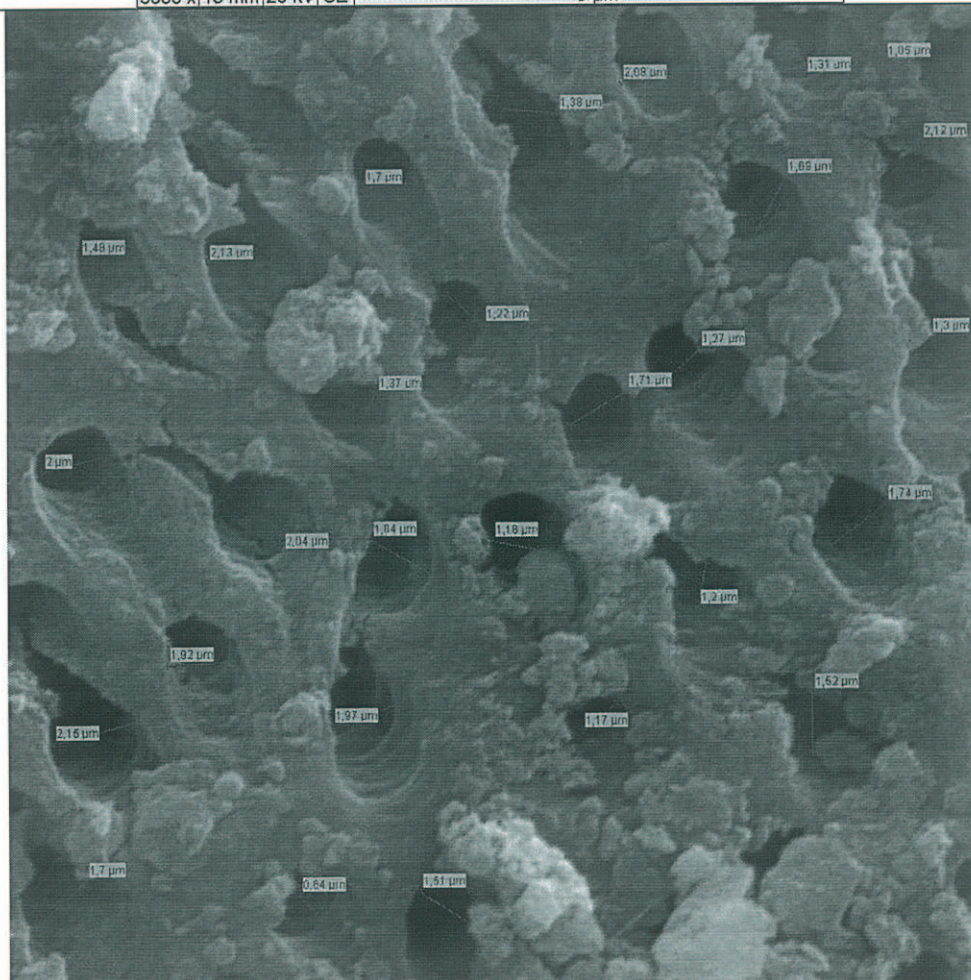
Mag	WD	HV	Det
3000 x	15 mm	20 kV	SE

— 5 μ m —

**DIENTE # 20
TERCIO CERVICAL**

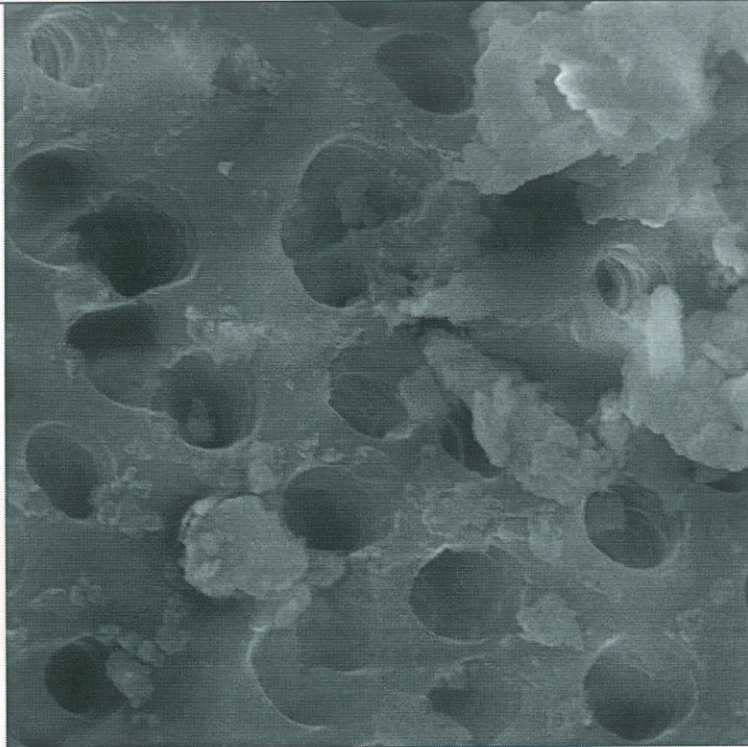


Mag	WD	HV	Det	
3000 x	15 mm	20 kV	SE	5 μm

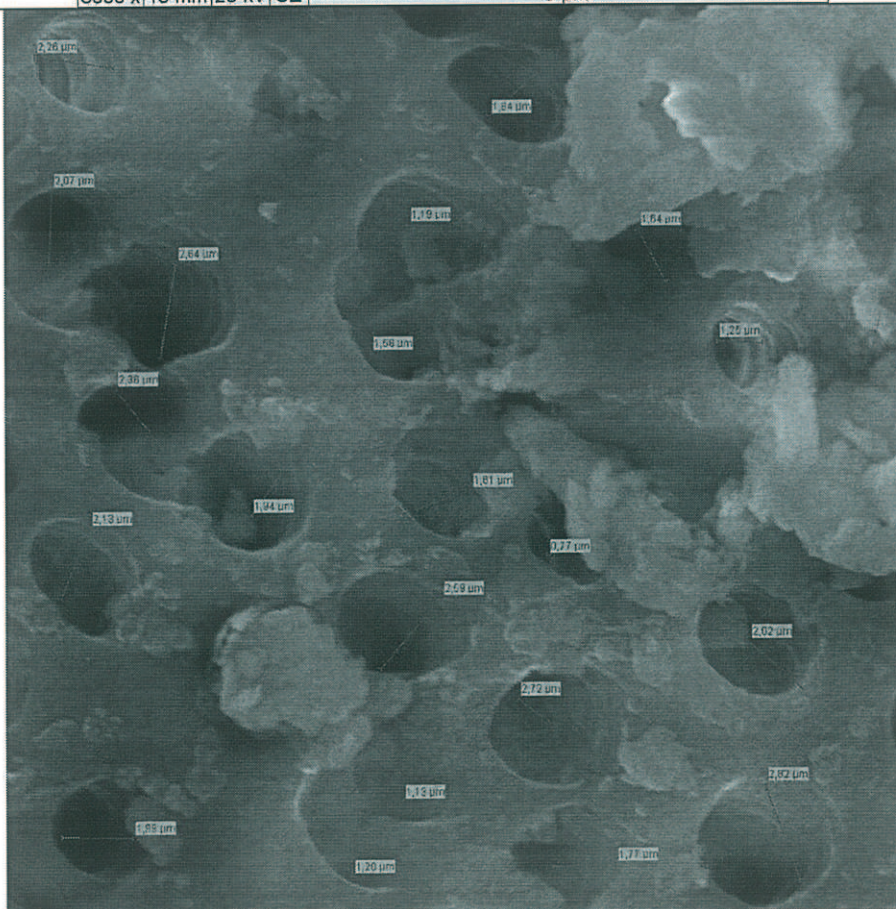


Mag	WD	HV	Det	
3000 x	15 mm	20 kV	SE	5 μm

**DIENTE # 20
TERCIO MEDIO**

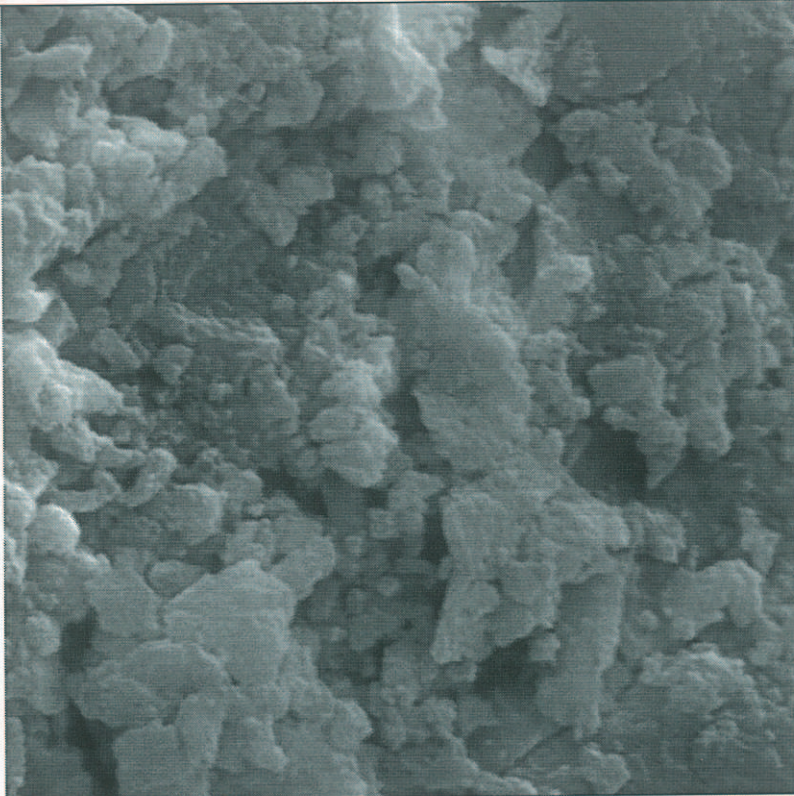


Mag	WD	HV	Det	
3000 x	15 mm	20 kV	SE	5 μ m



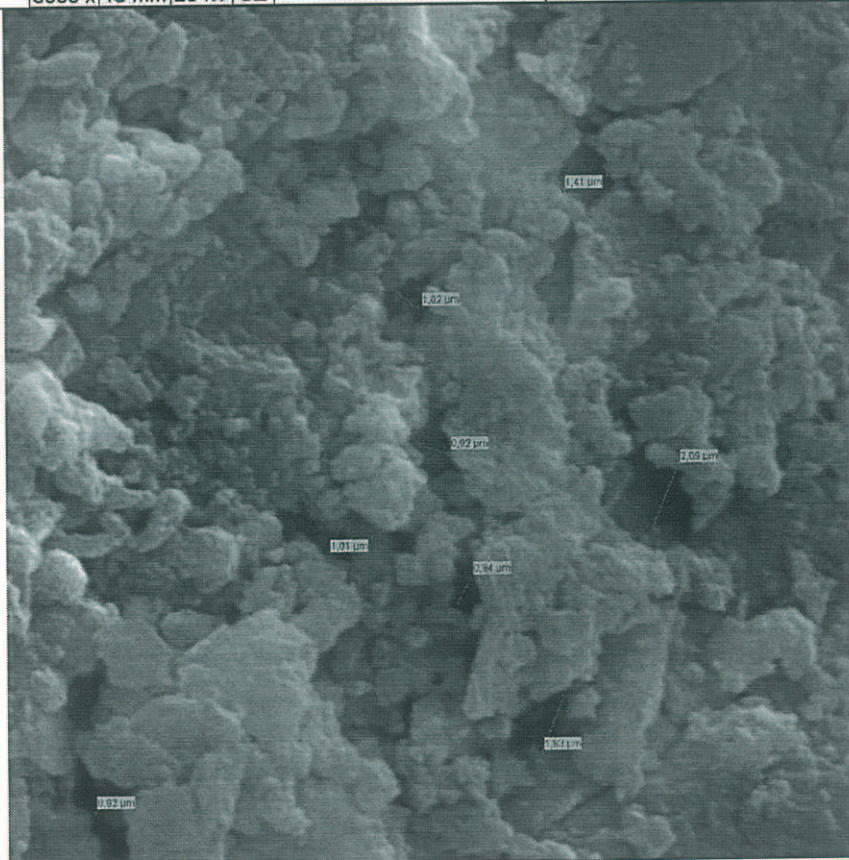
Mag	WD	HV	Det	
3000 x	15 mm	20 kV	SE	5 μ m

**DIENTE # 20
TERCIO APICAL**



Mag	WD	HV	Det
3000 x	15 mm	20 kV	SE

— 5 μ m —

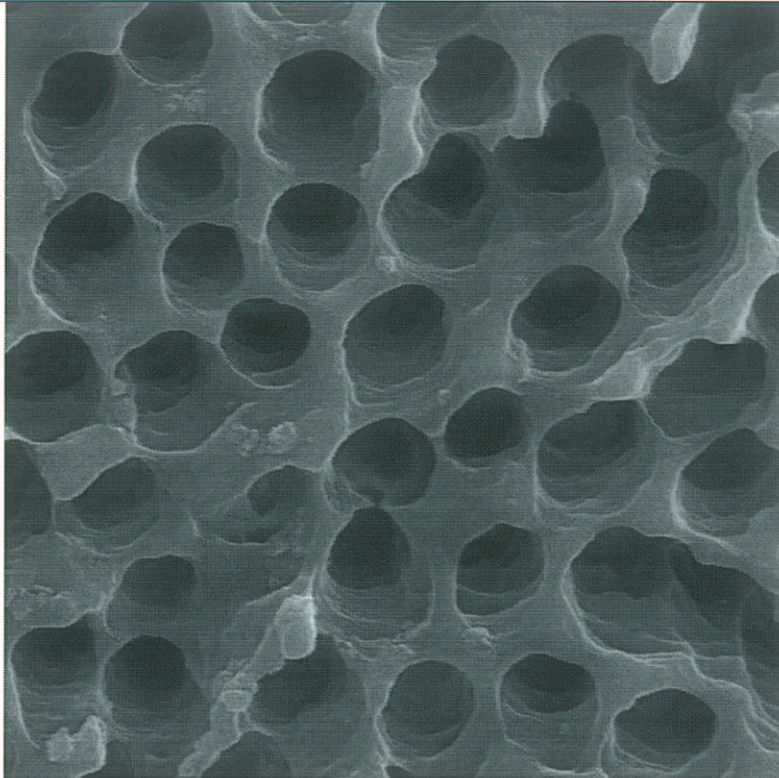


Mag	WD	HV	Det
3000 x	15 mm	20 kV	SE

— 5 μ m —

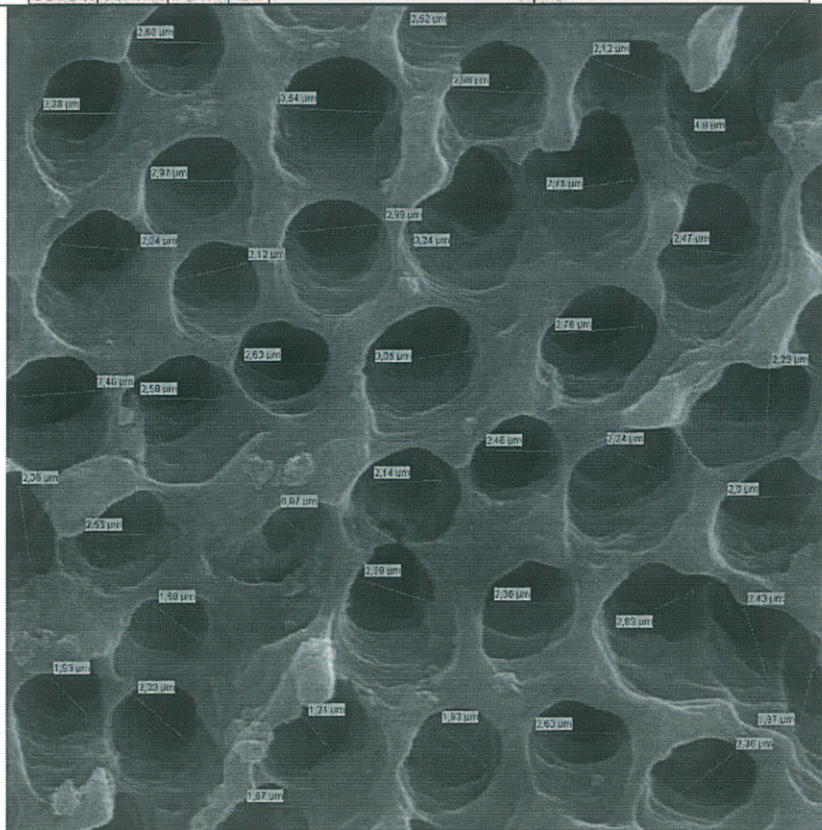
GRUPO E EDTA 17% POR 3 MINUTOS

DIENTE # 21
TERCIO CERVICAL



Mag	WD	HV	Det
3000 x	15 mm	20 kV	SE

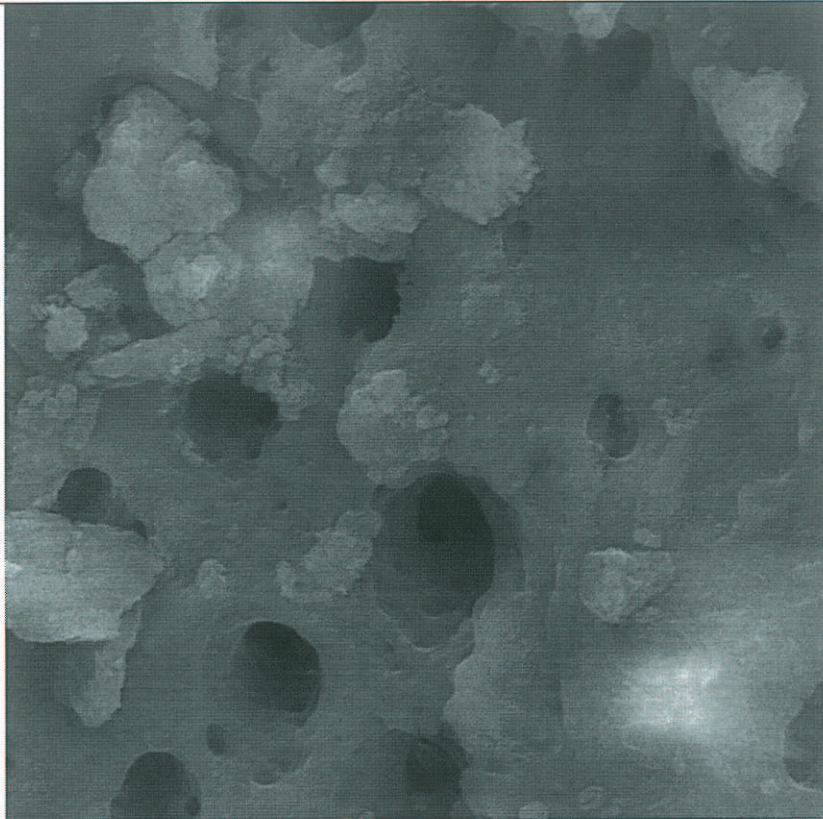
5 μm



Mag	WD	HV	Det
3000 x	15 mm	20 kV	SE

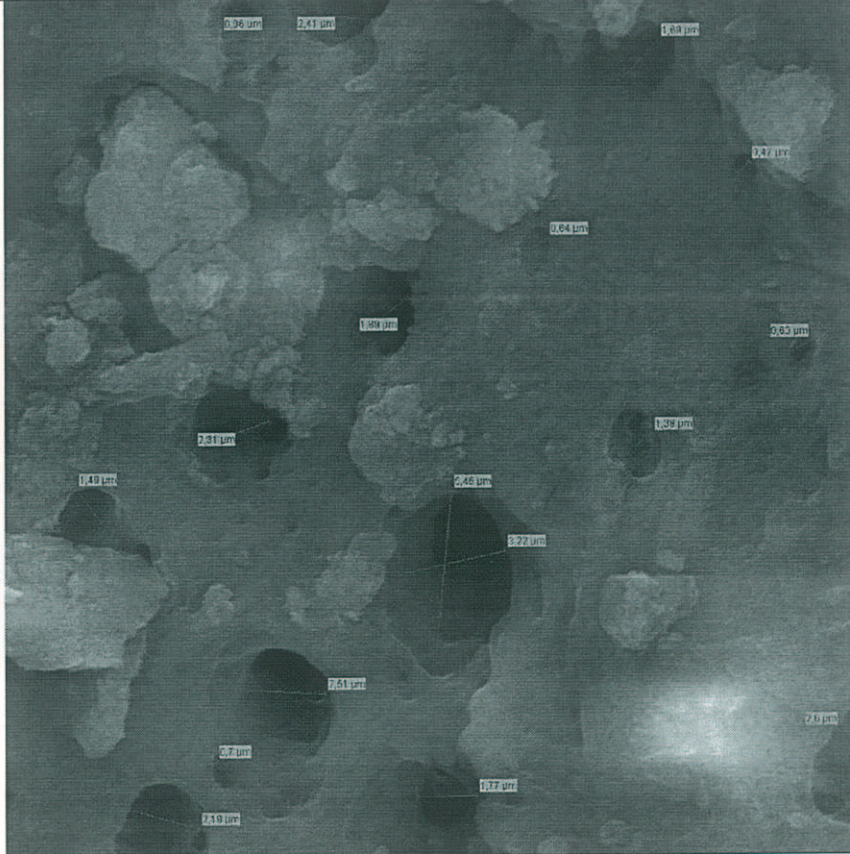
5 μm

**DIENTE # 21
TERCIO MEDIO**



Mag	WD	HV	Det
3000 x	15 mm	20 kV	SE

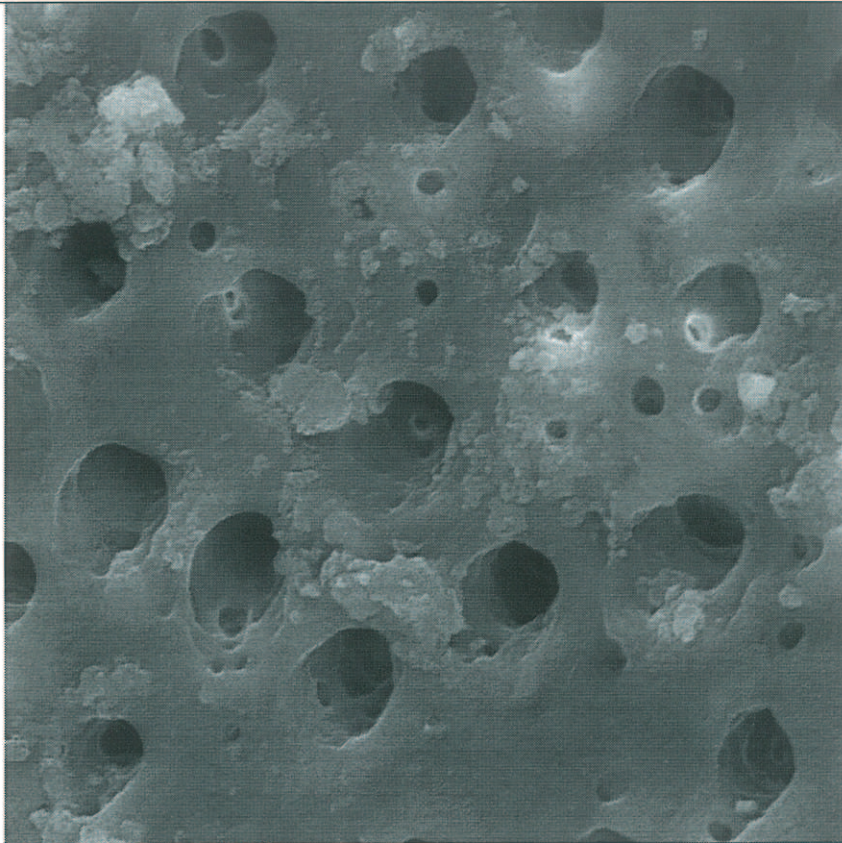
— 5 μm —



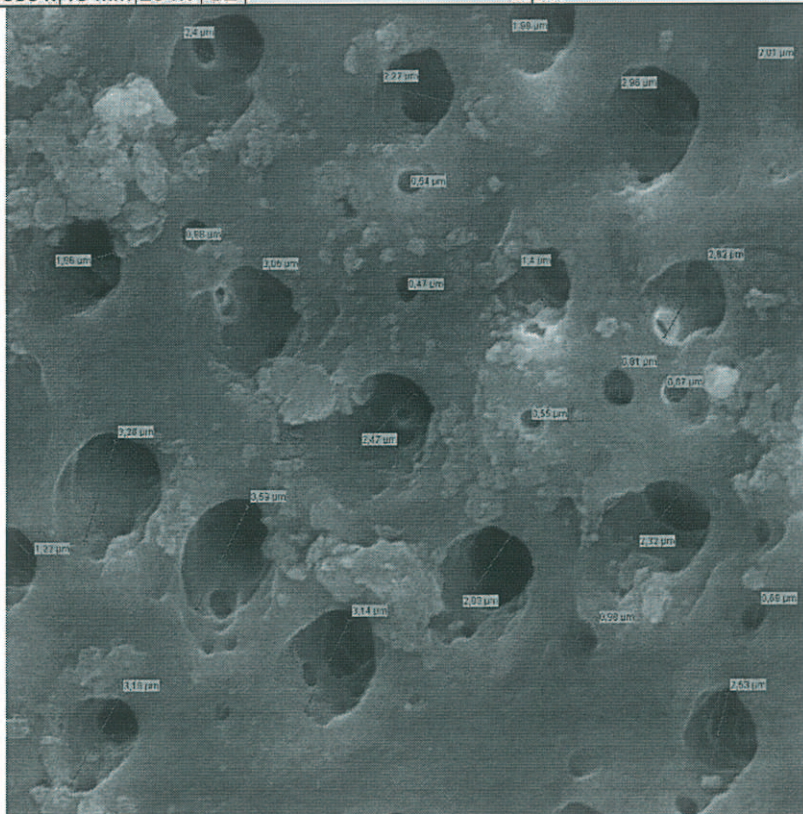
Mag	WD	HV	Det
3000 x	15 mm	20 kV	SE

— 5 μm —

**DIENTE # 21
TERCIO APICAL**

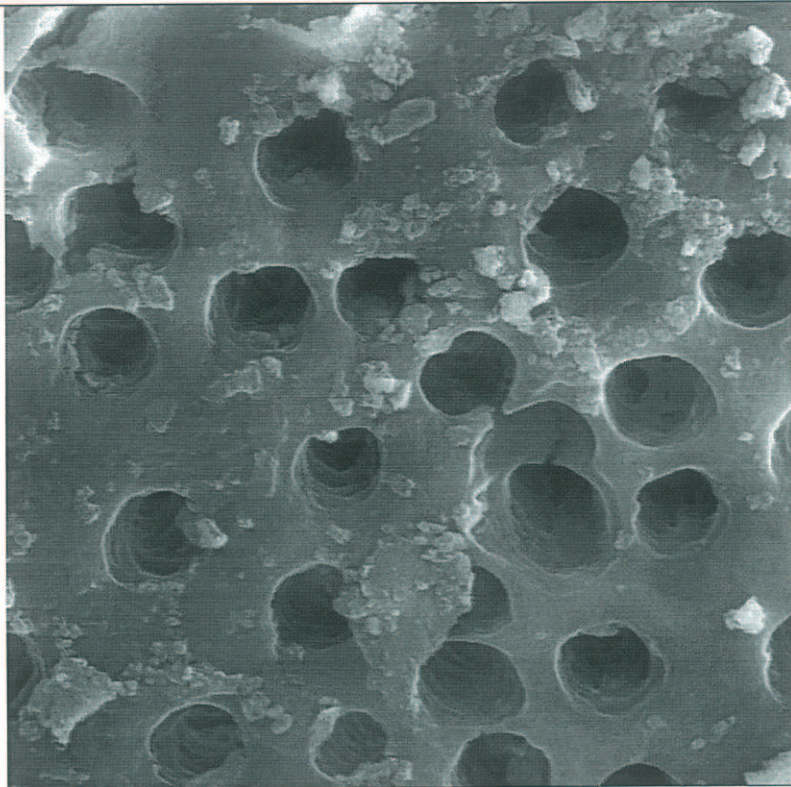


Mag	WD	HV	Det	
3000 x	15 mm	20 kV	SE	5 μ m



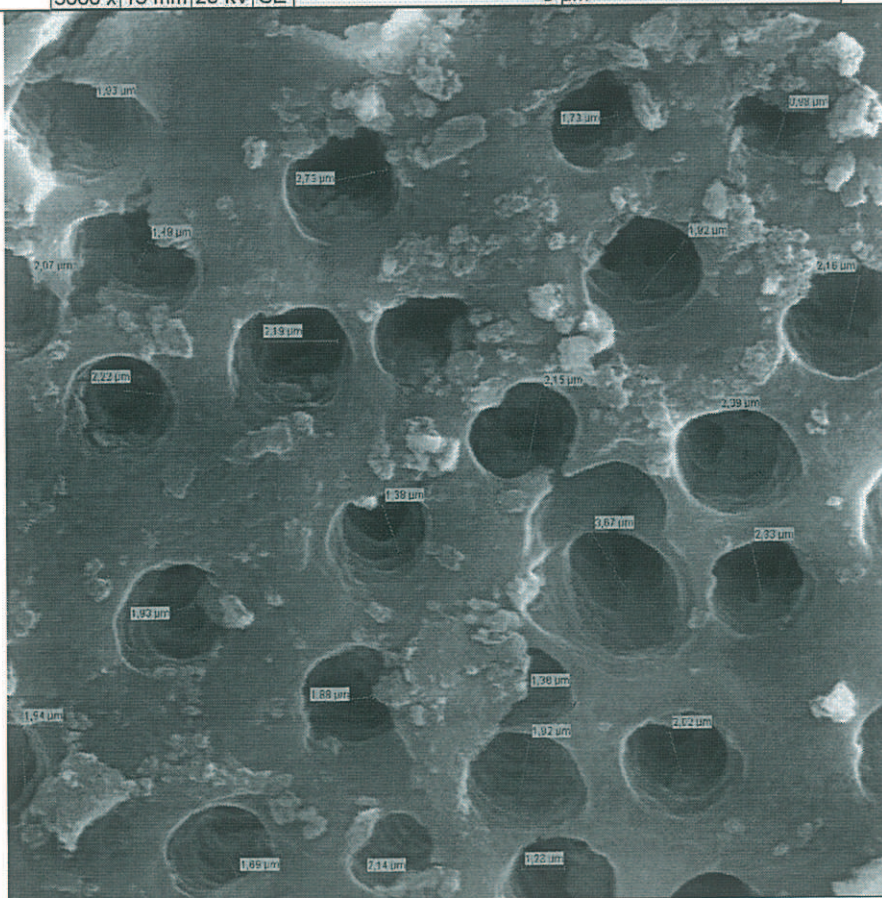
Mag	WD	HV	Det	
3000 x	15 mm	20 kV	SE	5 μ m

DIENTE # 22
TERCIO CERVICAL



Mag	WD	HV	Det
3000 x	15 mm	20 kV	SE

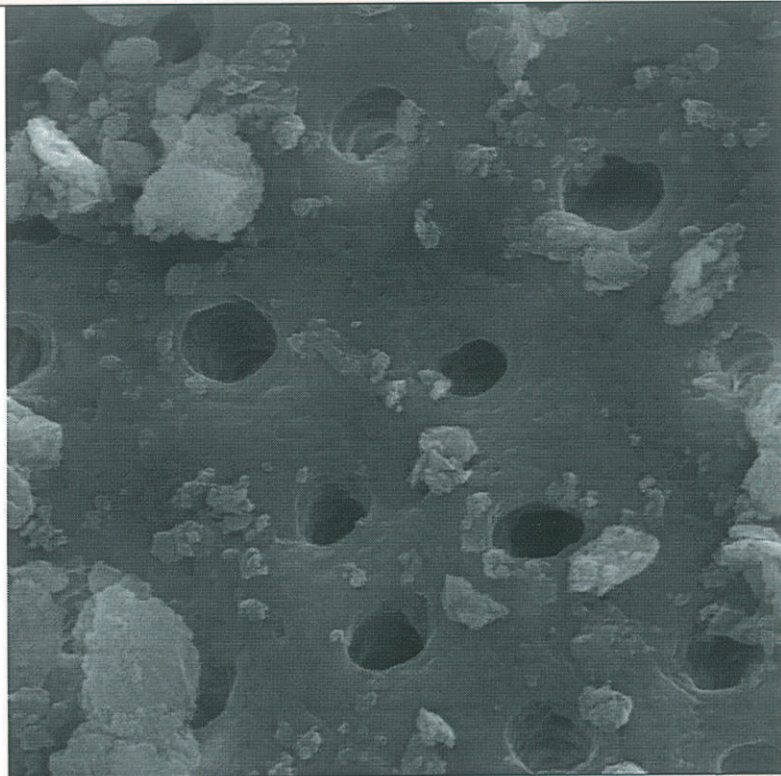
5 μ m



Mag	WD	HV	Det
3000 x	15 mm	20 kV	SE

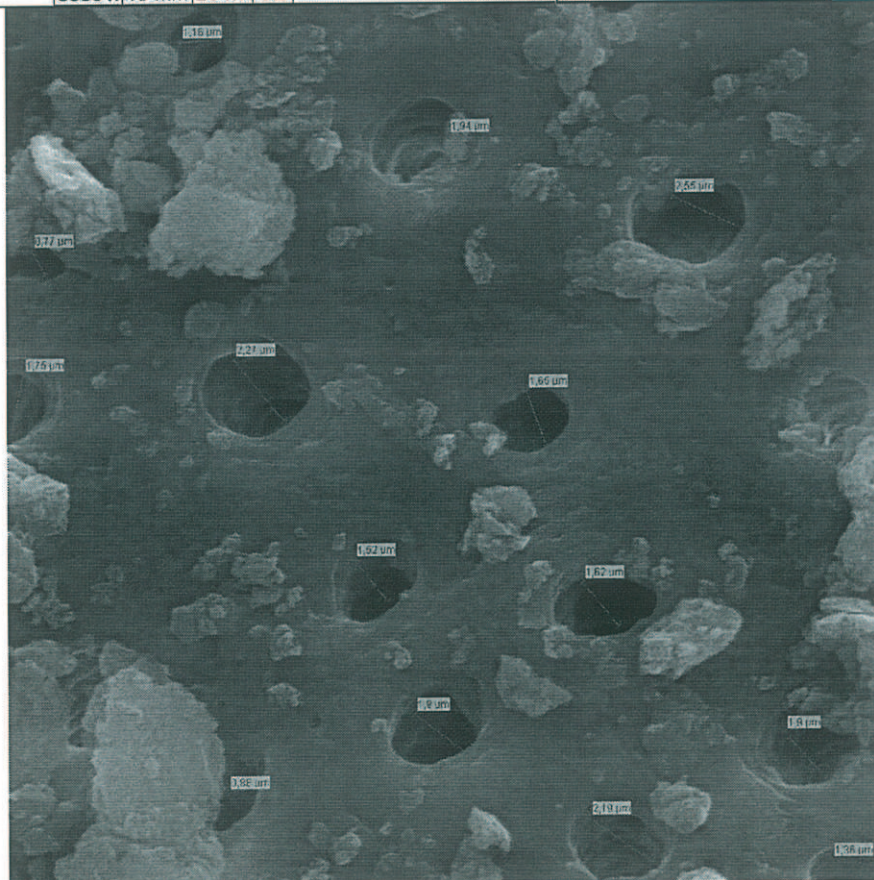
5 μ m

**DIENTE # 22
TERCIO MEDIO**



Mag	WD	HV	Det
3000 x	15 mm	20 kV	SE

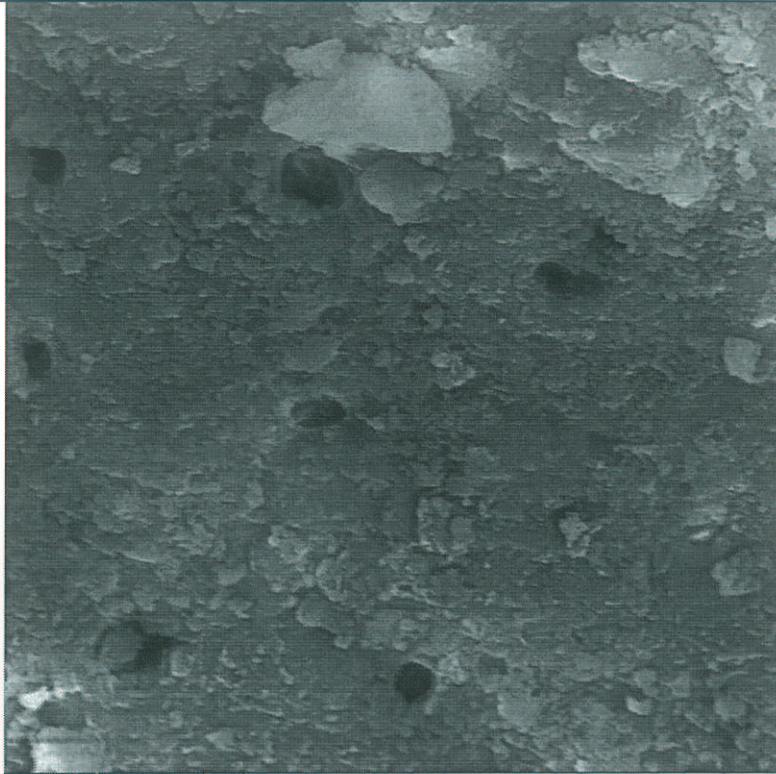
5 µm



Mag	WD	HV	Det
3000 x	15 mm	20 kV	SE

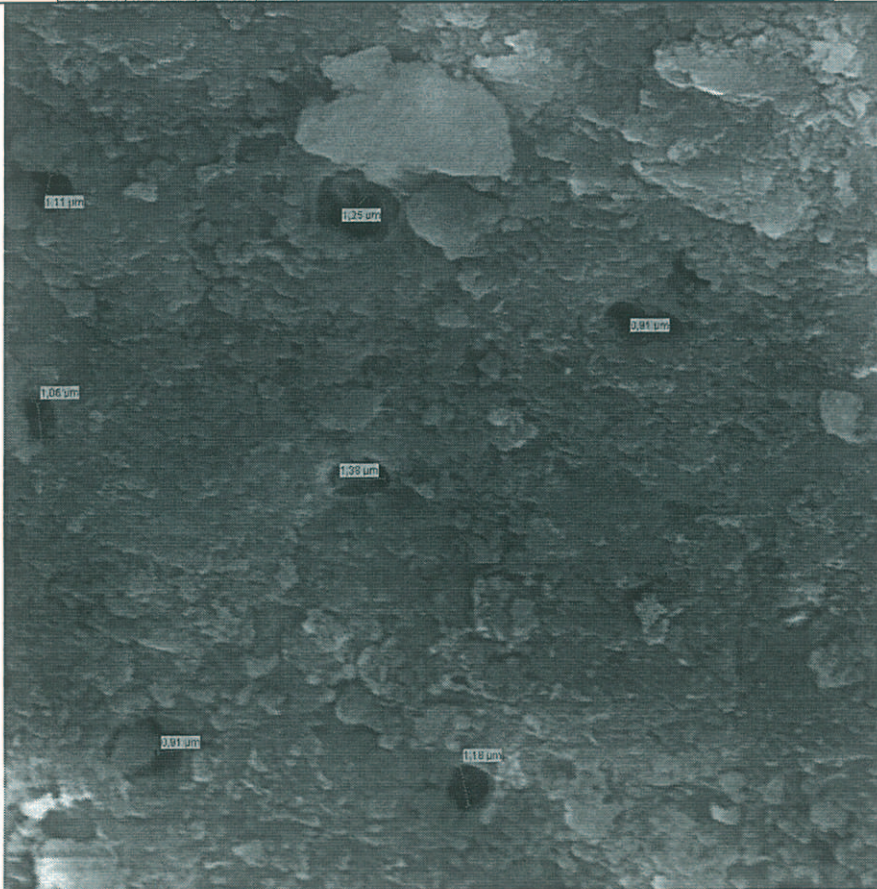
5 µm

**DIENTE # 22
TERCIO APICAL**



Mag	WD	HV	Det
3000 x	15 mm	20 kV	SE

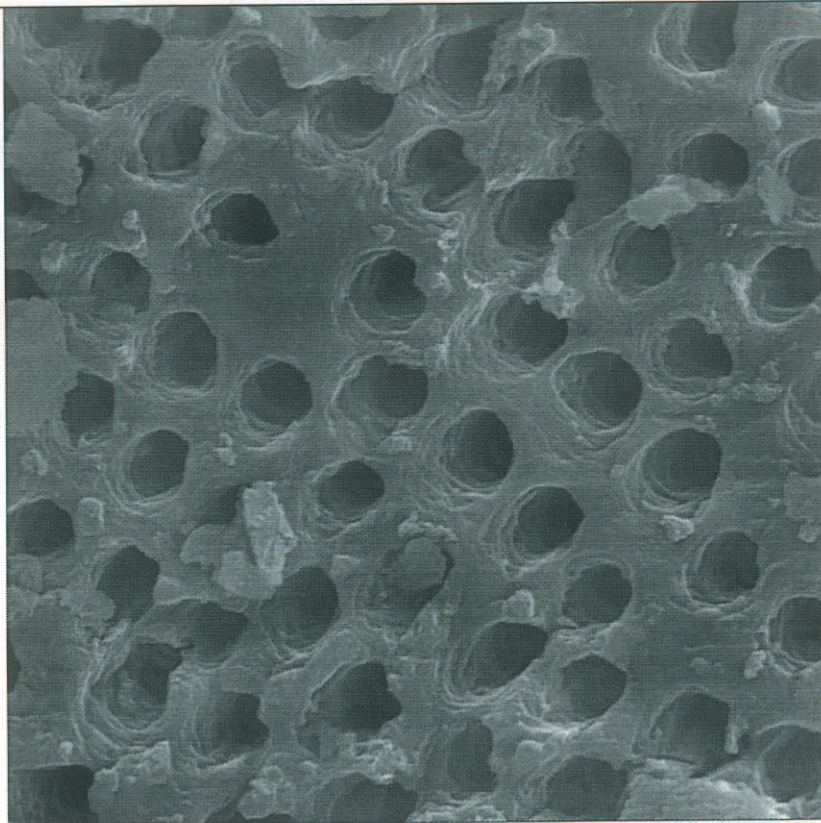
5 μ m



Mag	WD	HV	Det
3000 x	15 mm	20 kV	SE

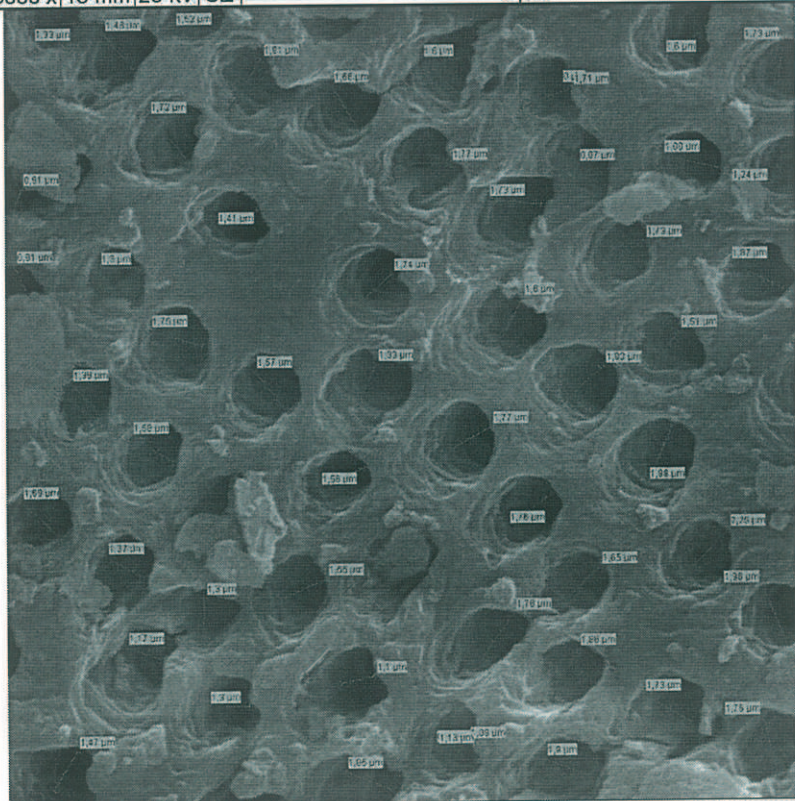
5 μ m

DIENTE # 23
TERCIO CERVICAL



Mag	WD	HV	Det
3000 x	15 mm	20 kV	SE

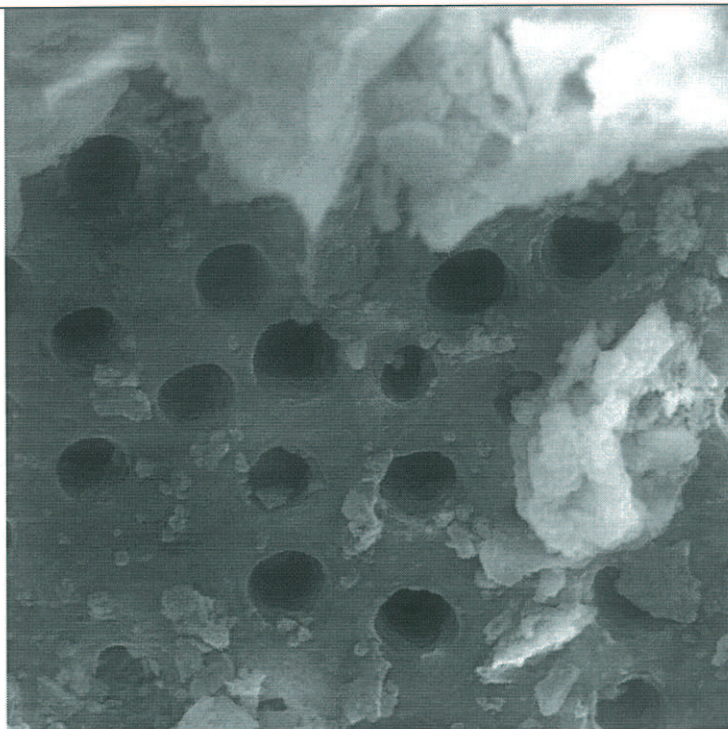
5 μ m



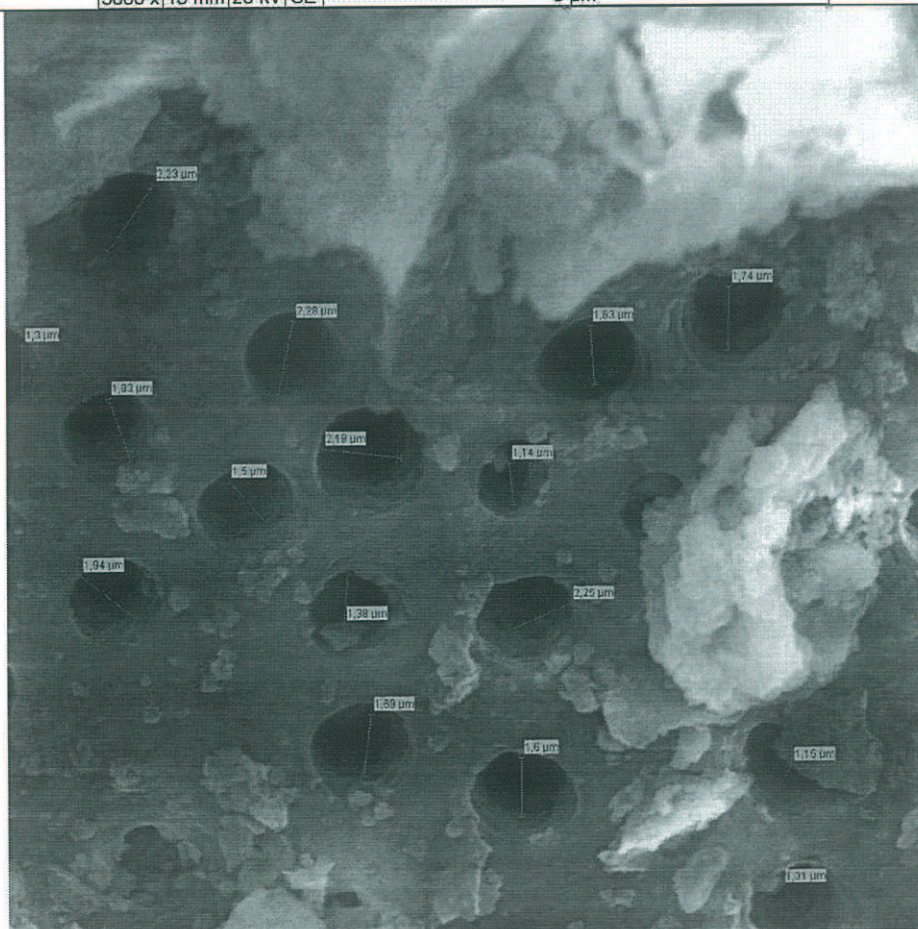
Mag	WD	HV	Det
3000 x	15 mm	20 kV	SE

5 μ m

**DIENTE # 23
TERCIO MEDIO**

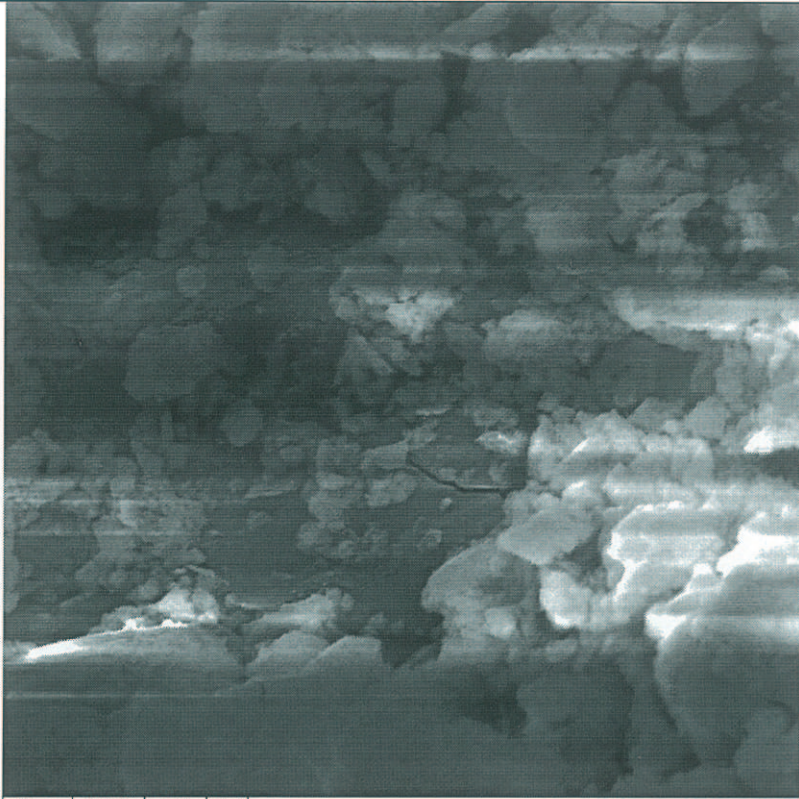


Mag	WD	HV	Det	
3000 x	15 mm	20 kV	SE	5 μ m



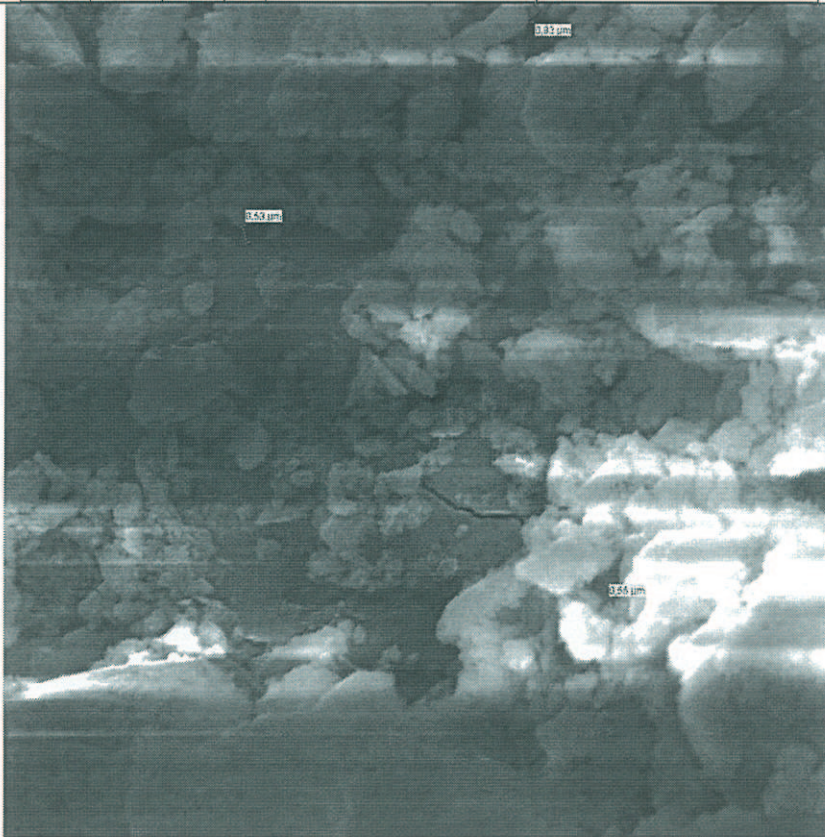
Mag	WD	HV	Det	
3000 x	15 mm	20 kV	SE	5 μ m

DIENTE # 23
TERCIO APICAL



Mag	WD	HV	Det
3000 x	15 mm	20 kV	SE

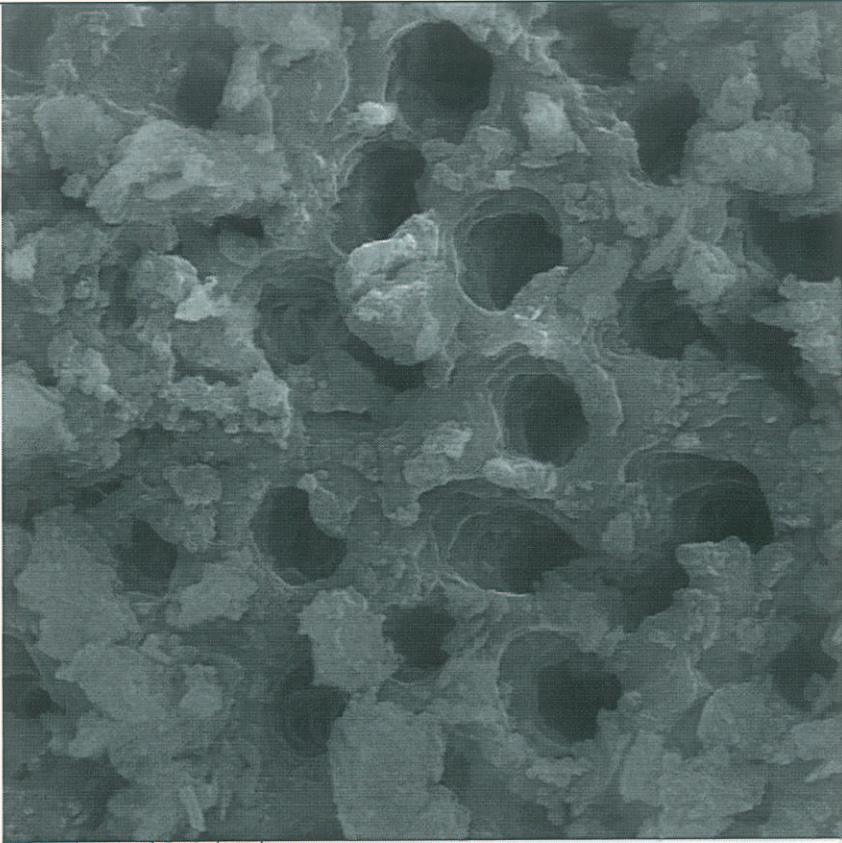
5 μ m



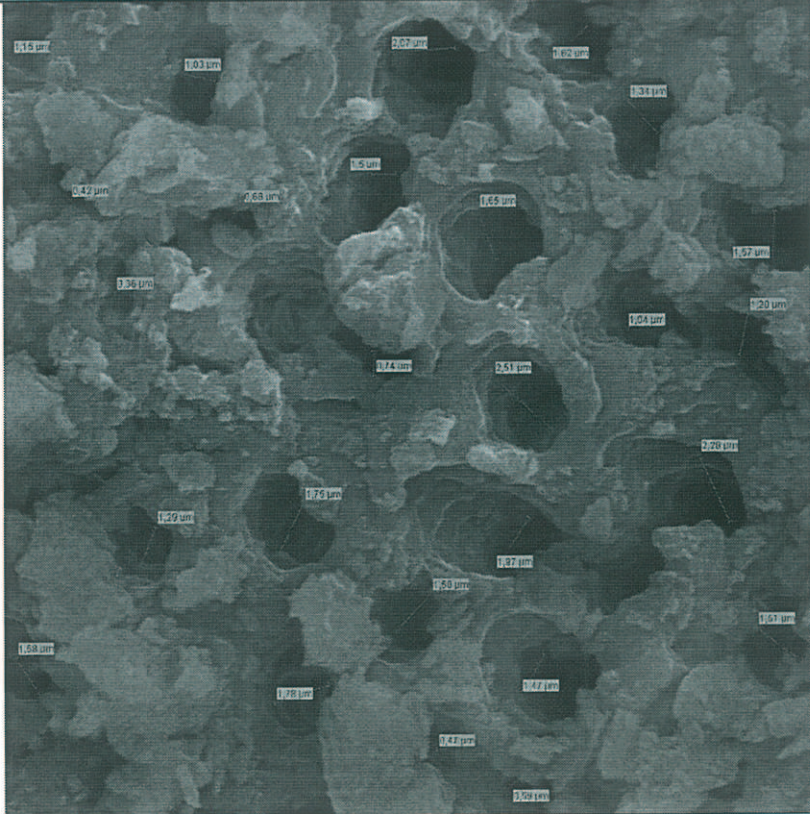
Mag	WD	HV	Det
3000 x	15 mm	20 kV	SE

5 μ m

**DIENTE #24
TERCIO CERVICAL**

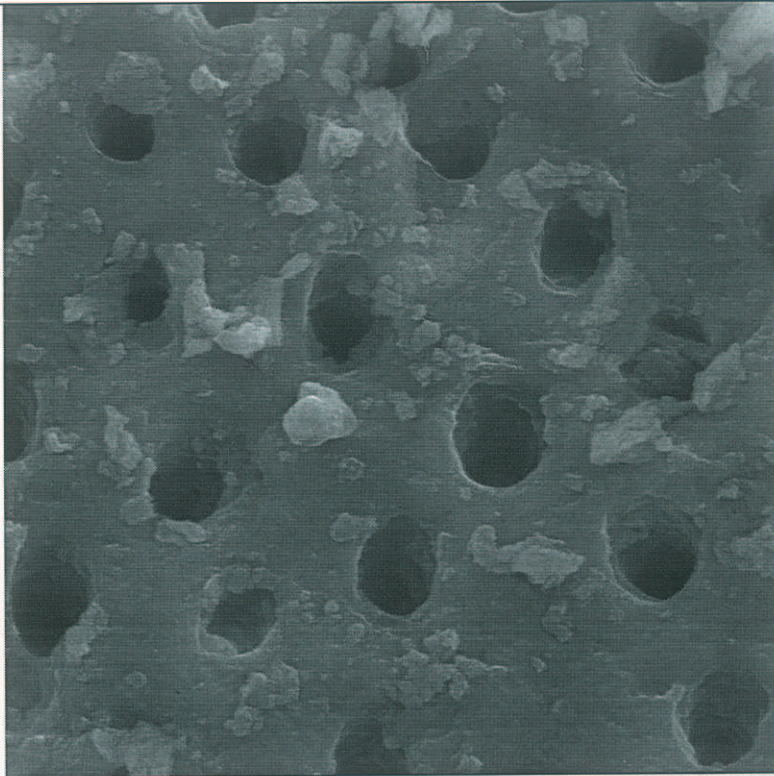


Mag	WD	HV	Det	
3000 x	15 mm	20 kV	SE	5 μm

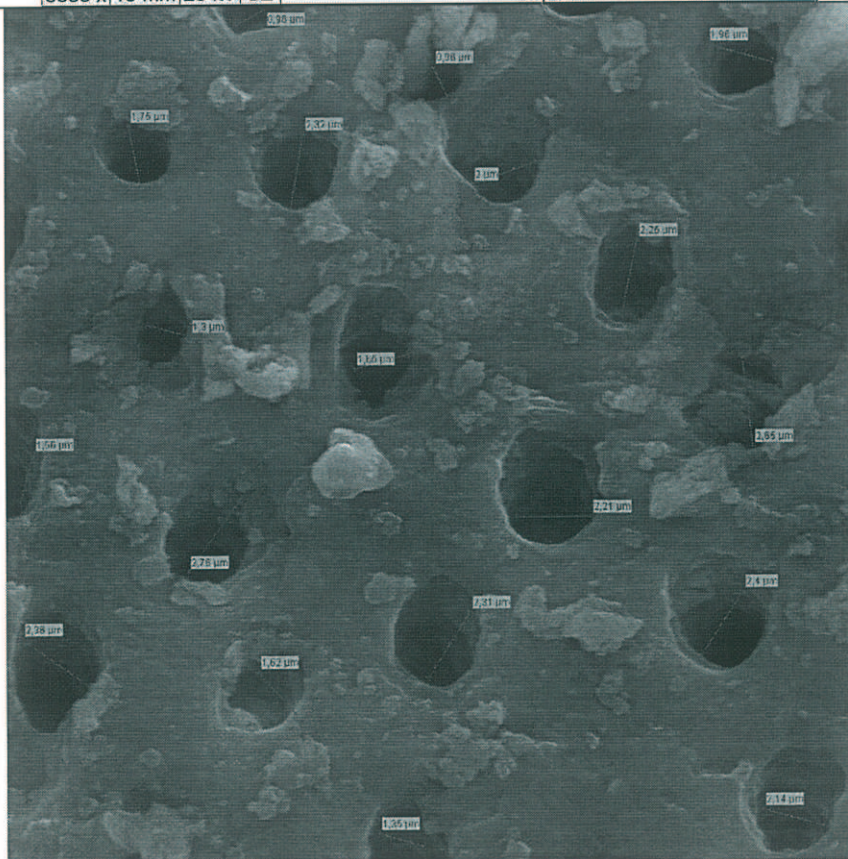


Mag	WD	HV	Det	
3000 x	15 mm	20 kV	SE	5 μm

**DIENTE #24
TERCIO MEDIO**

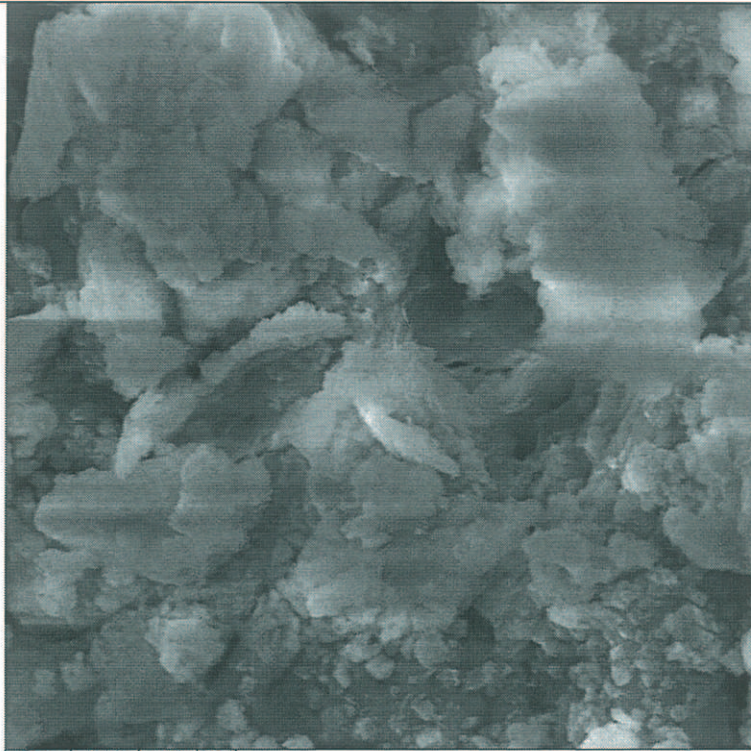


Mag	WD	HV	Det	
3000 x	15 mm	20 kV	SE	5 μ m



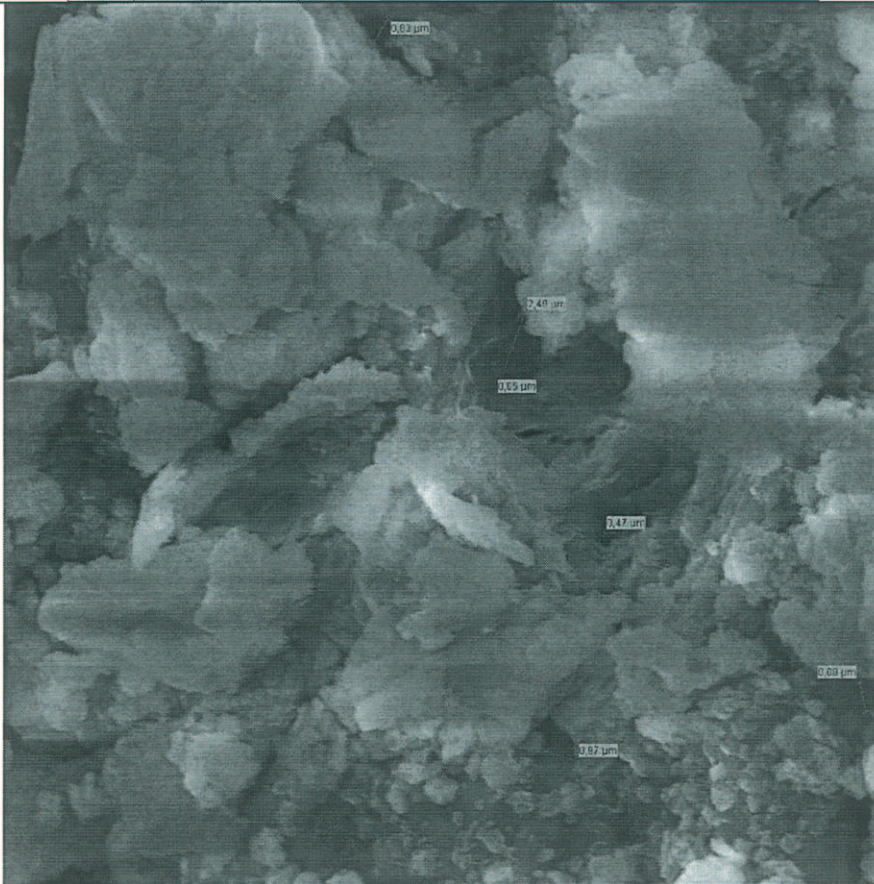
Mag	WD	HV	Det	
3000 x	15 mm	20 kV	SE	5 μ m

**DIENTE # 24
TERCIO APICAL**



Mag	WD	HV	Det
3000 x	15 mm	20 kV	SE

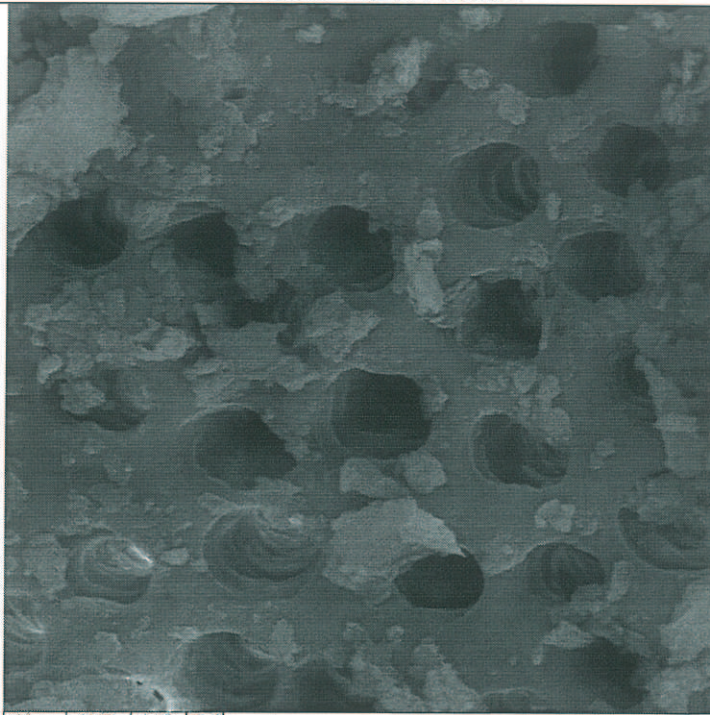
— 5 μ m —



Mag	WD	HV	Det
3000 x	15 mm	20 kV	SE

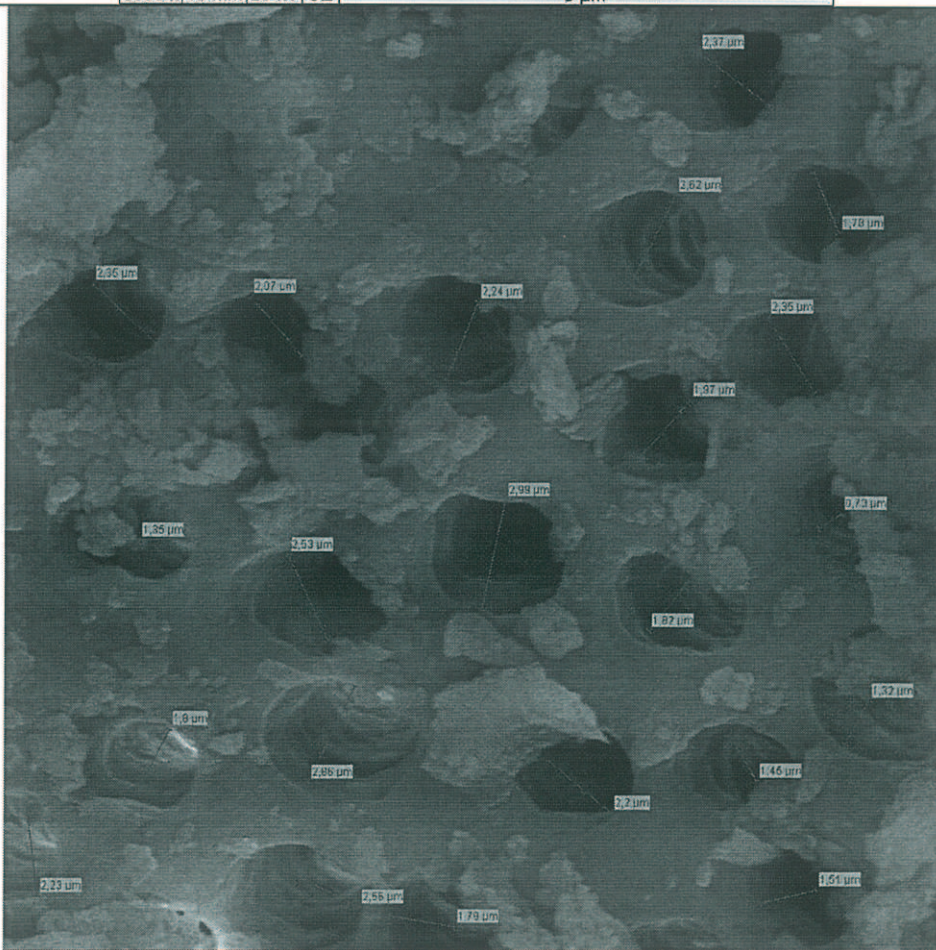
— 5 μ m —

**DIENTE # 25
TERCIO CERVICAL**



Mag	WD	HV	Det
3000 x	15 mm	20 kV	SE

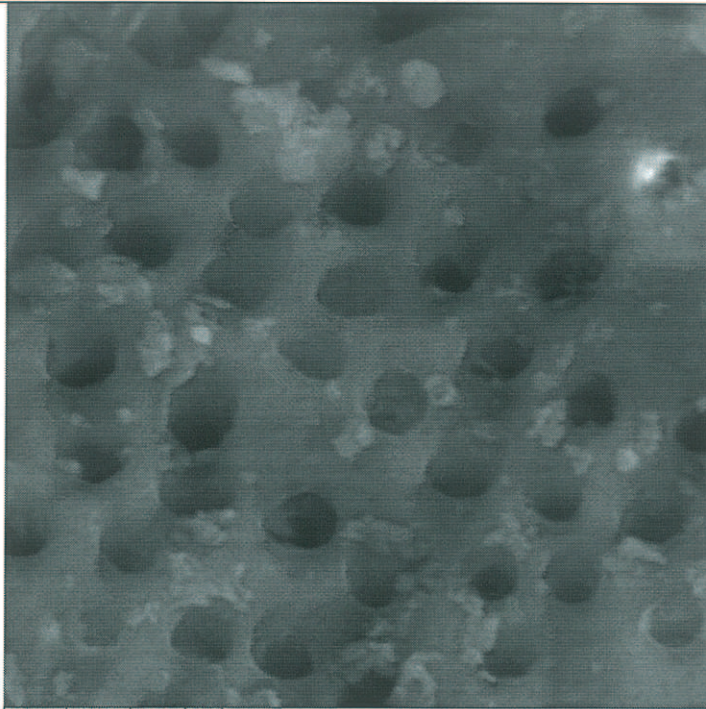
5 μ m



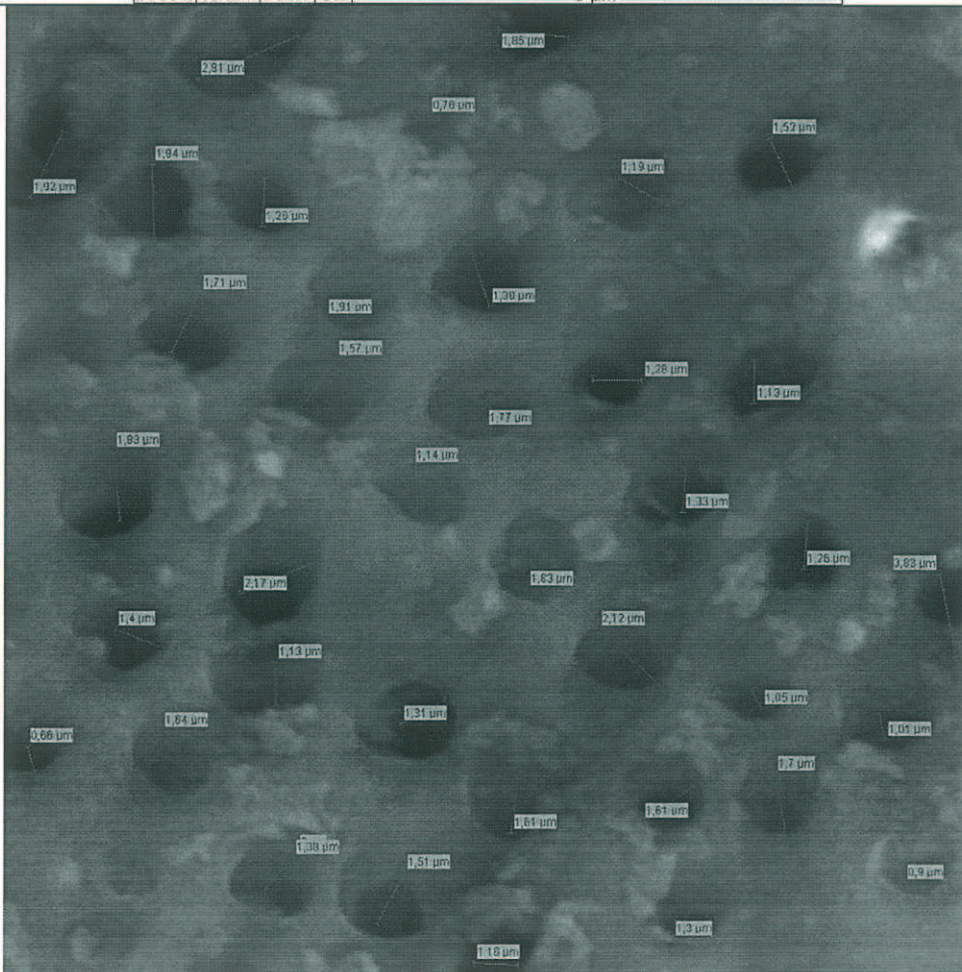
Mag	WD	HV	Det
3000 x	15 mm	20 kV	SE

5 μ m

**DIENTE # 25
TERCIO MEDIO**

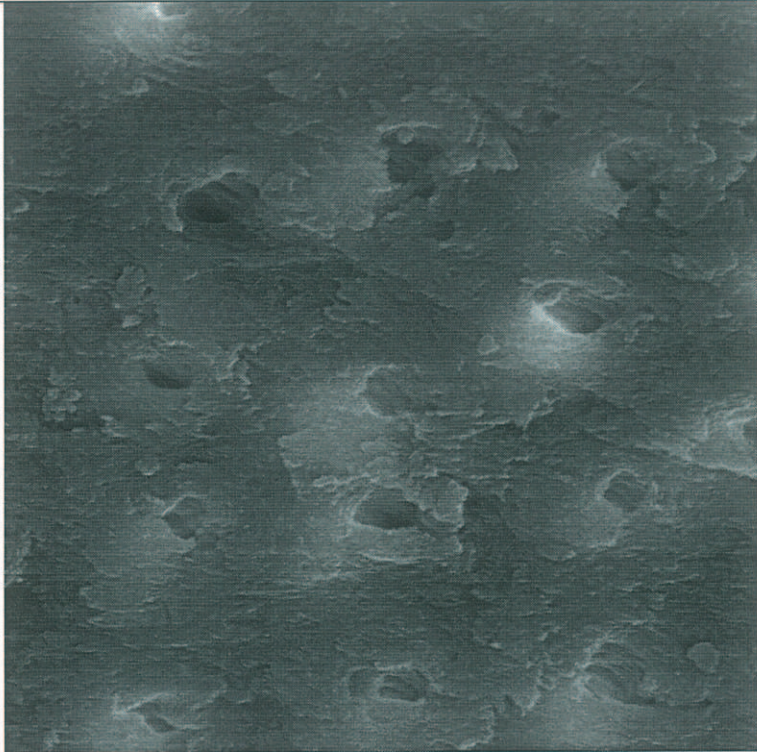


Mag	WD	HV	Det	
3000 x	15 mm	20 kV	SE	5 μm



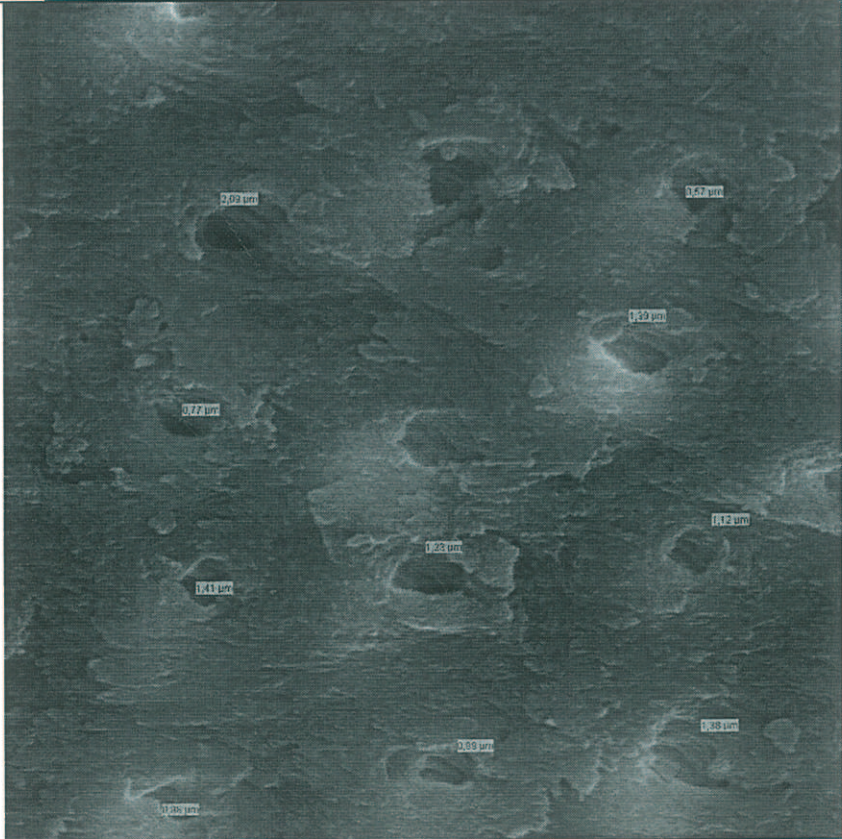
Mag	WD	HV	Det	
3000 x	15 mm	20 kV	SE	5 μm

**DIENTE # 25
TERCIO APICAL**



Mag	WD	HV	Det
3000 x	15 mm	20 kV	SE

5 μ m

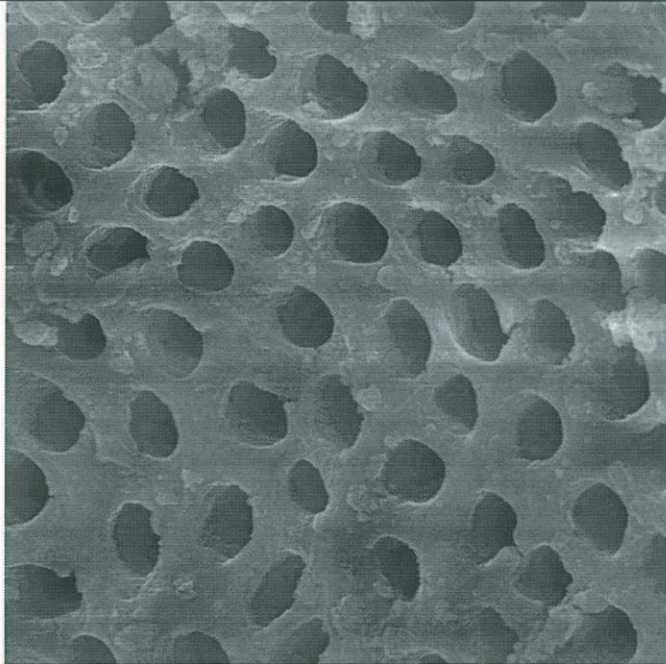


Mag	WD	HV	Det
3000 x	15 mm	20 kV	SE

5 μ m

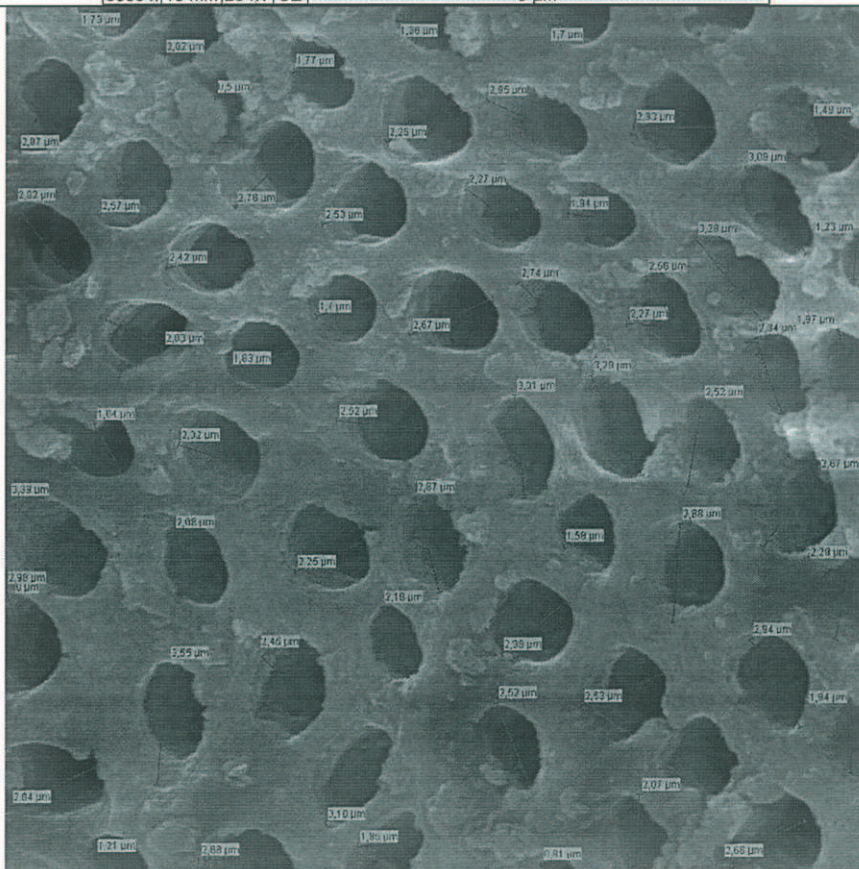
GRUPO F MTAD POR 3 MINUTOS

DIENTE # 26
TERCIO CERVICAL



Mag	WD	HV	Det
3000 x	15 mm	20 kV	SE

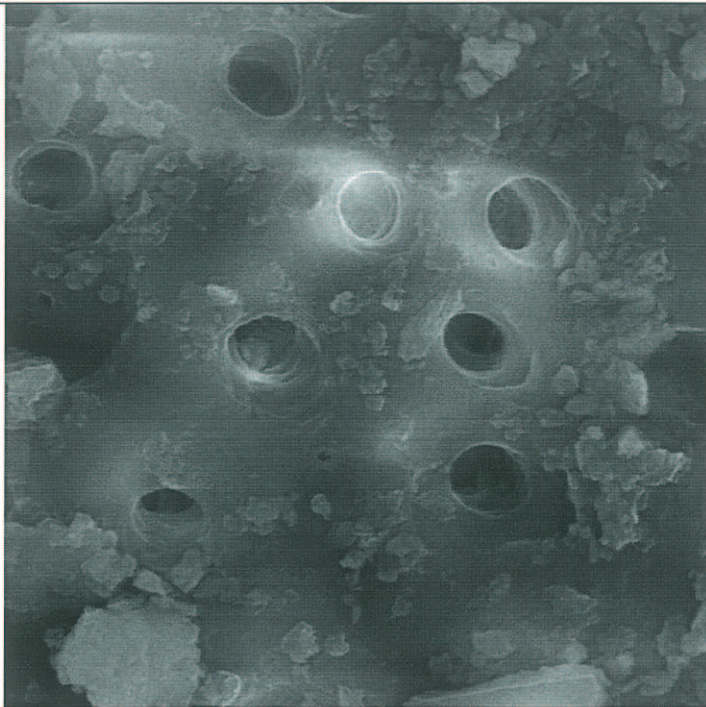
5 μm



Mag	WD	HV	Det
3000 x	15 mm	20 kV	SE

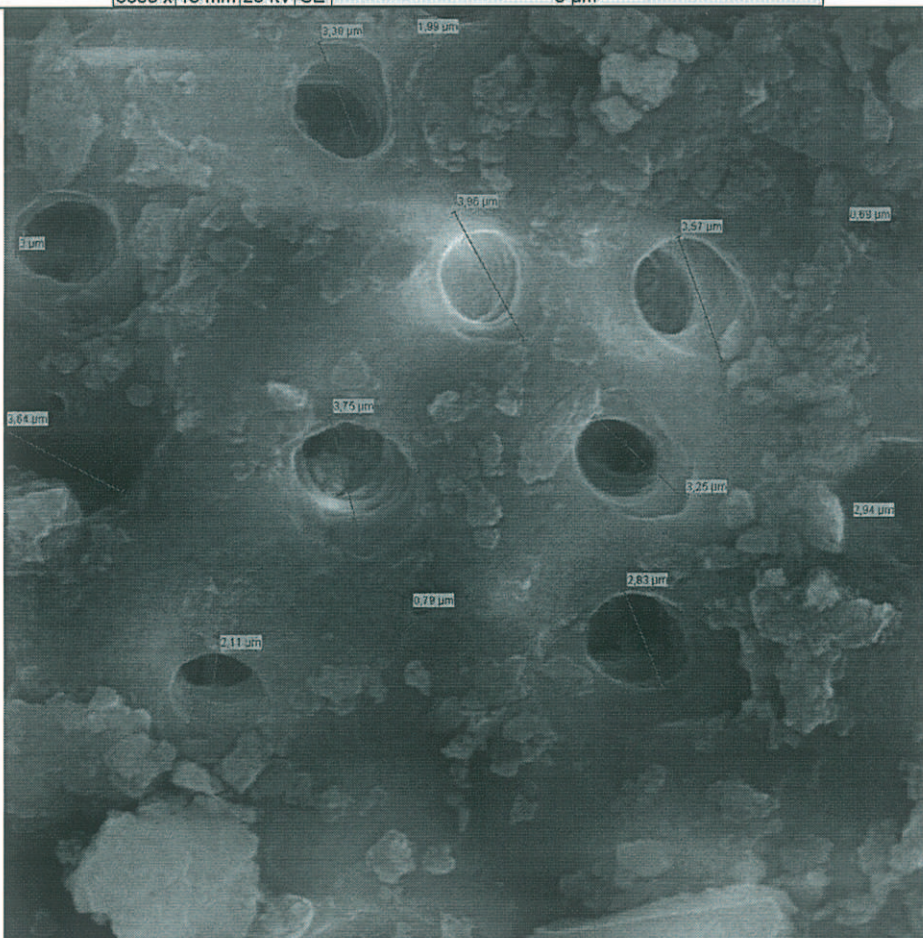
5 μm

DIENTE # 26
TERCIO MEDIO



Mag	WD	HV	Det
3000 x	15 mm	20 kV	SE

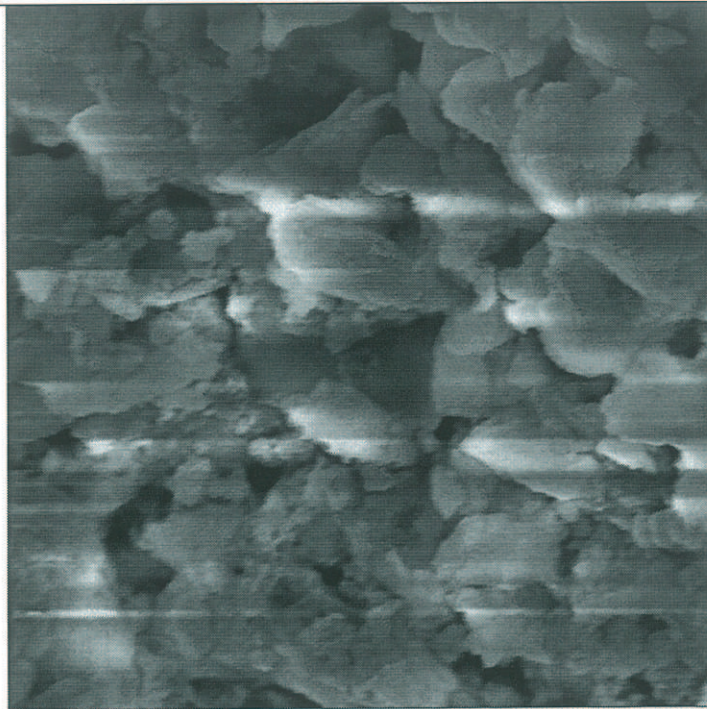
— 5 μ m —



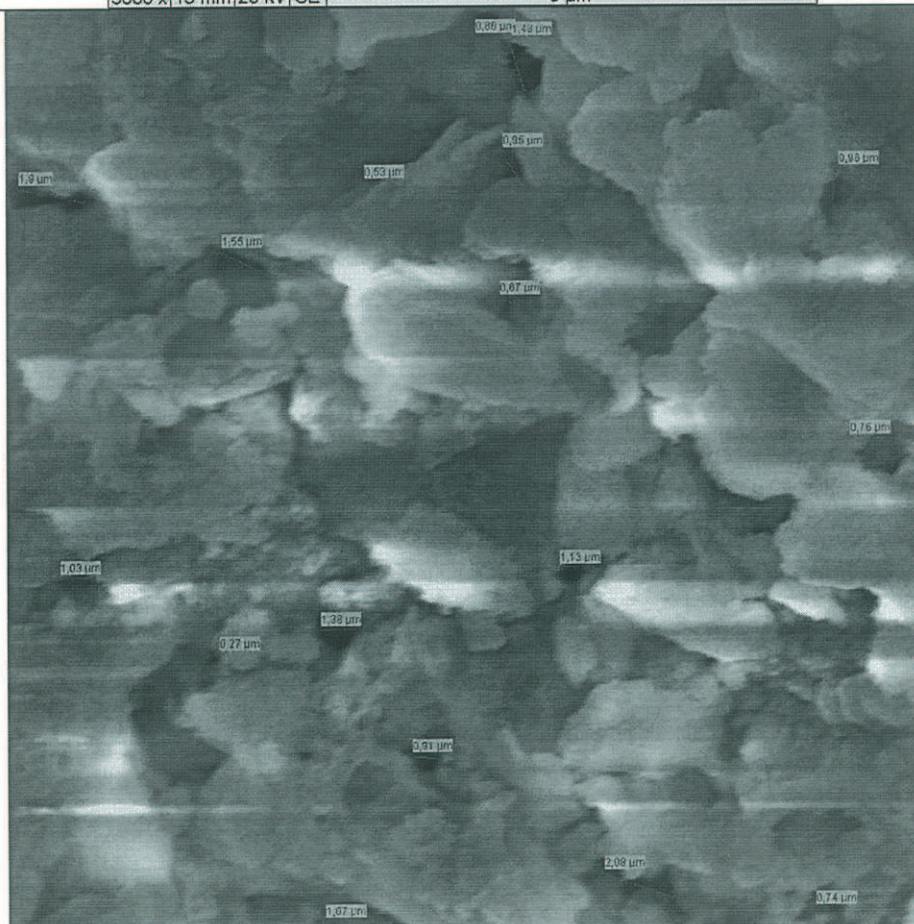
Mag	WD	HV	Det
3000 x	15 mm	20 kV	SE

— 5 μ m —

**DIENTE # 26
TERCIO APICAL**

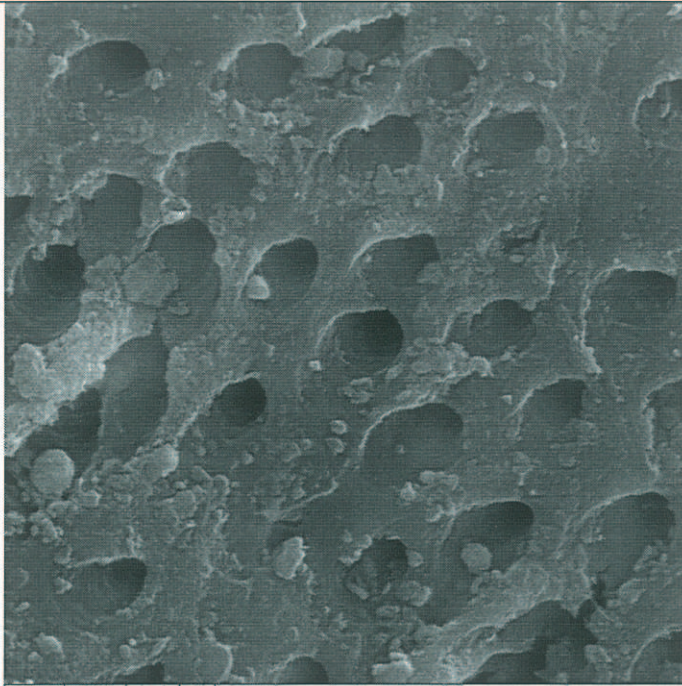


Mag	WD	HV	Det	
3000 x	15 mm	20 kV	SE	5 μ m



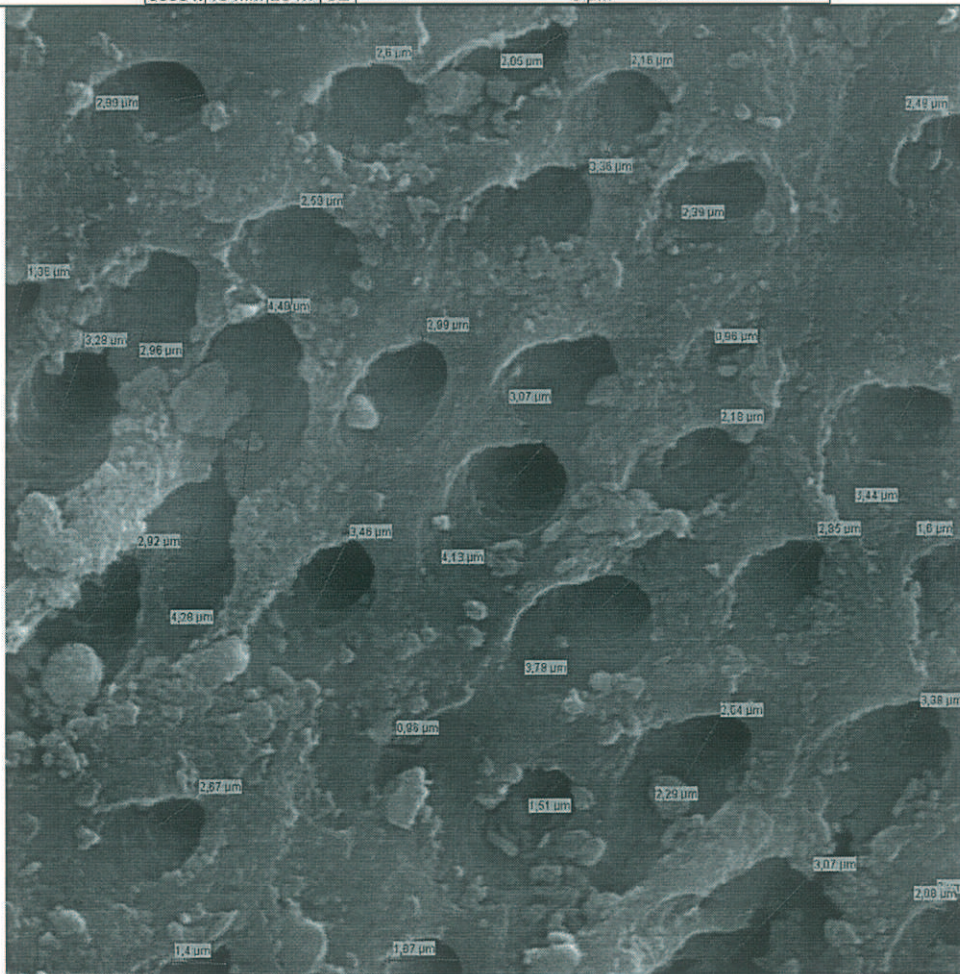
Mag	WD	HV	Det	
3000 x	15 mm	20 kV	SE	5 μ m

**DIENTE # 27
TERCIO CERVICAL**



Mag	WD	HV	Det
3000 x	16 mm	20 kV	SE

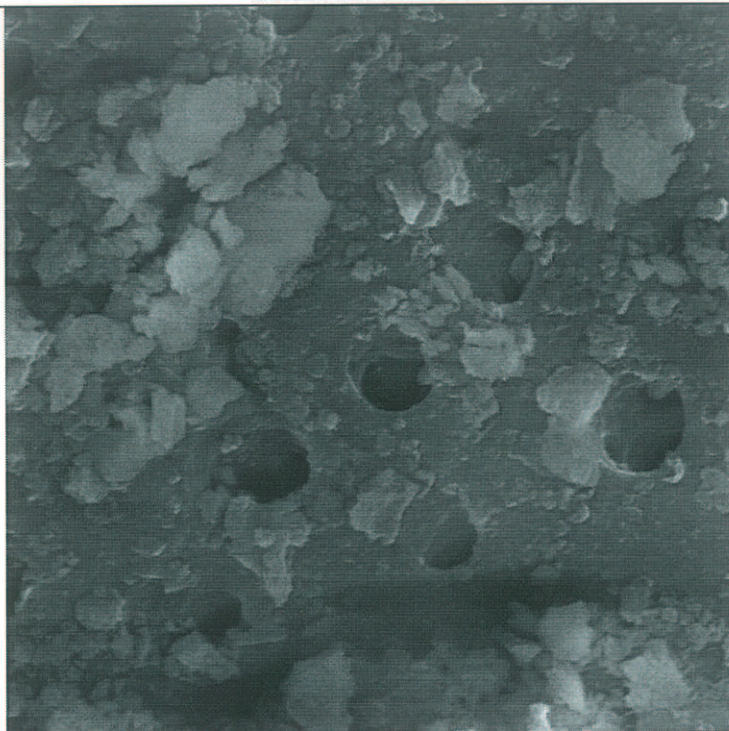
5 μm



Mag	WD	HV	Det
3000 x	16 mm	20 kV	SE

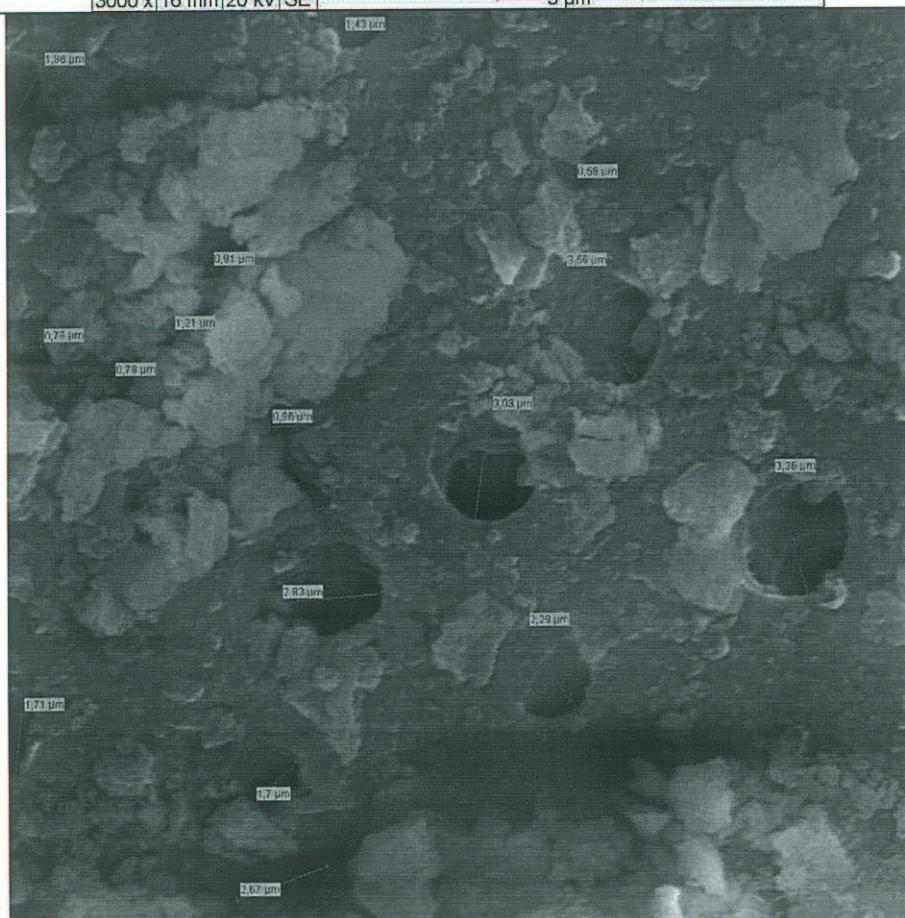
5 μm

**DIENTE # 27
TERCIO MEDIO**



Mag	WD	HV	Det
3000 x	16 mm	20 kV	SE

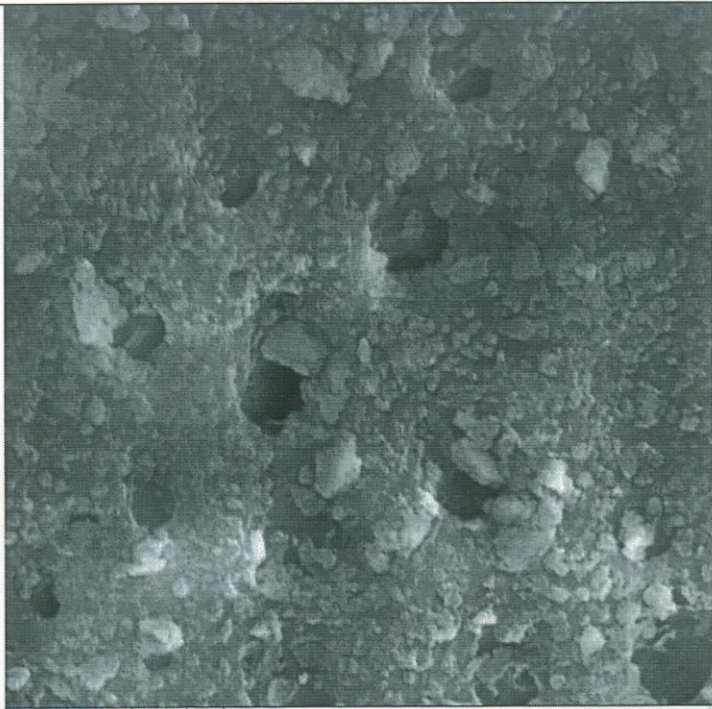
5 μ m



Mag	WD	HV	Det
3000 x	16 mm	20 kV	SE

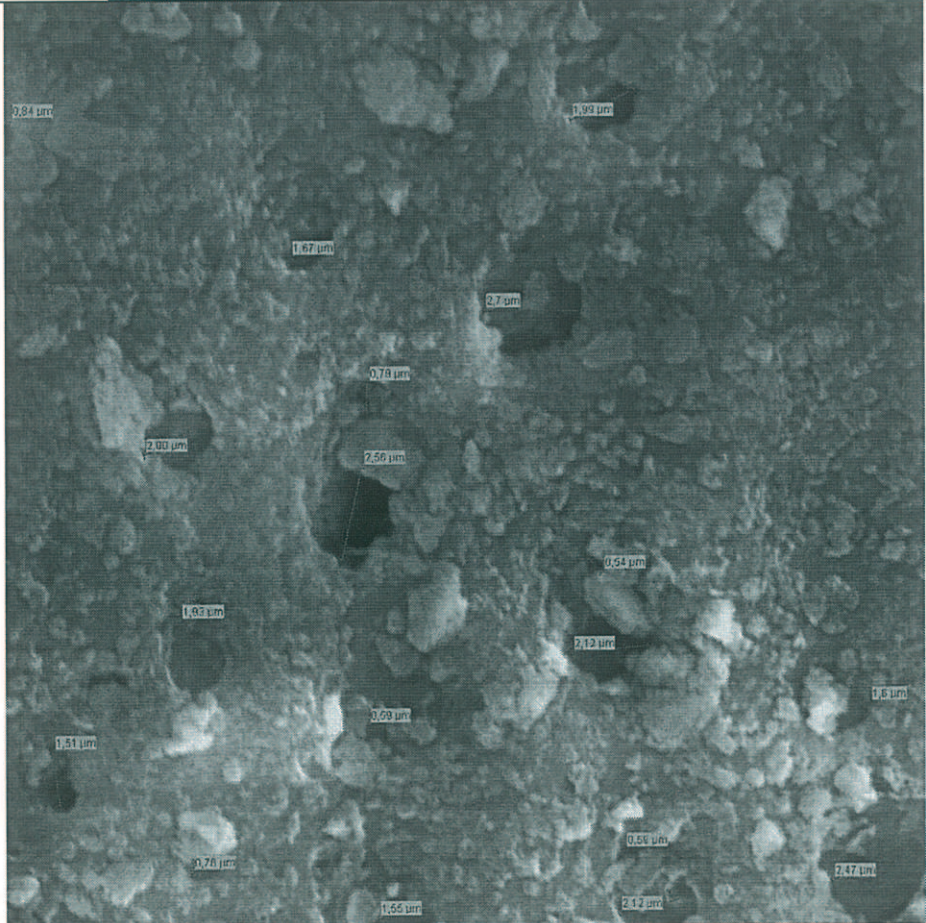
5 μ m

**DIENTE # 27
TERCIO APICAL**



Mag	WD	HV	Det
3000 x	15 mm	20 kV	SE

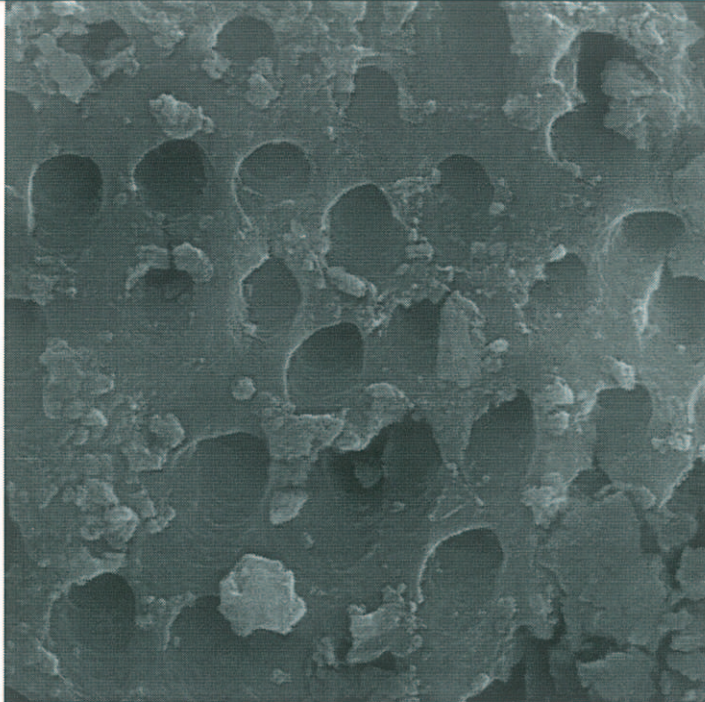
5 μ m



Mag	WD	HV	Det
3000 x	15 mm	20 kV	SE

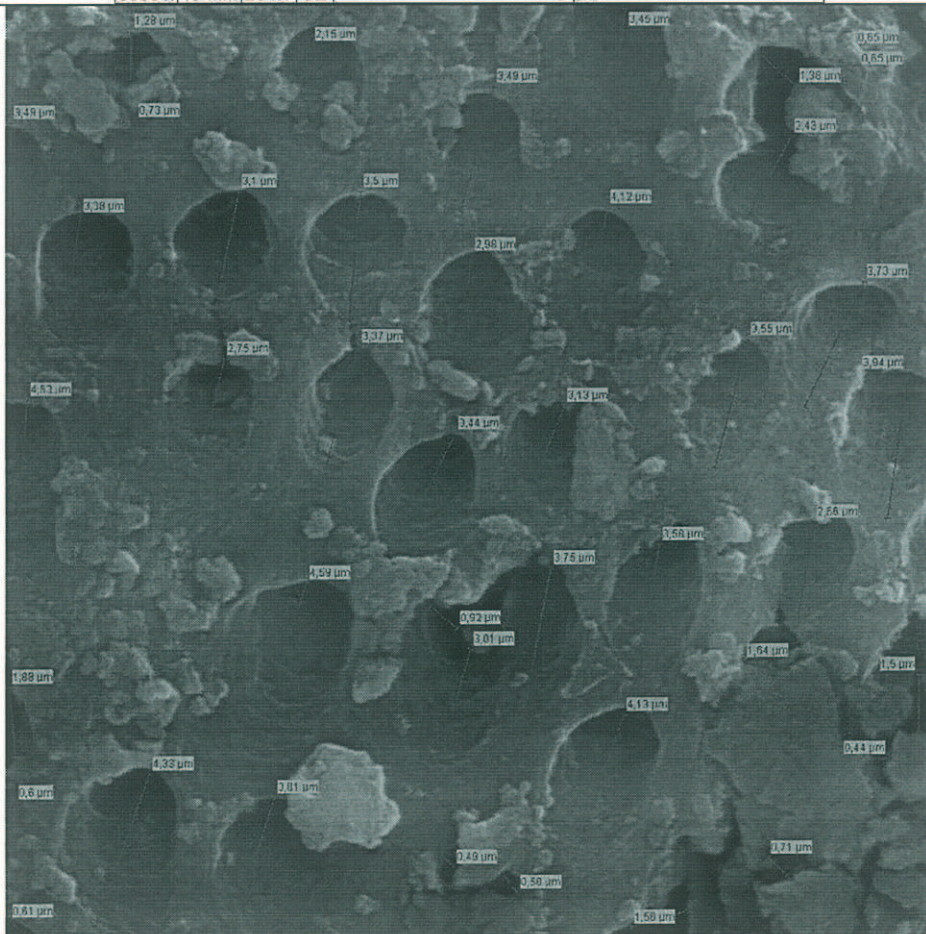
5 μ m

**DIENTE # 28
TERCIO CERVICAL**



Mag	WD	HV	Det
3000 x	15 mm	20 kV	SE

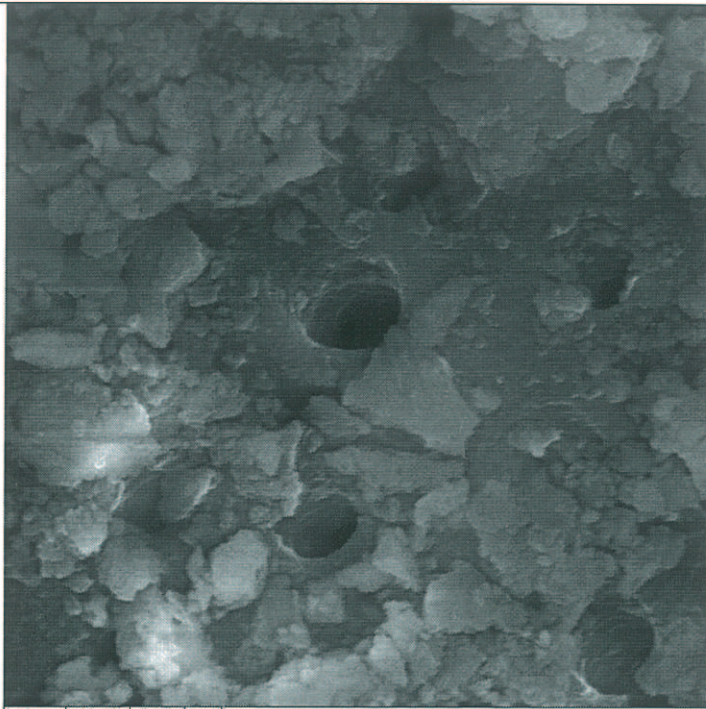
5 μm



Mag	WD	HV	Det
3000 x	15 mm	20 kV	SE

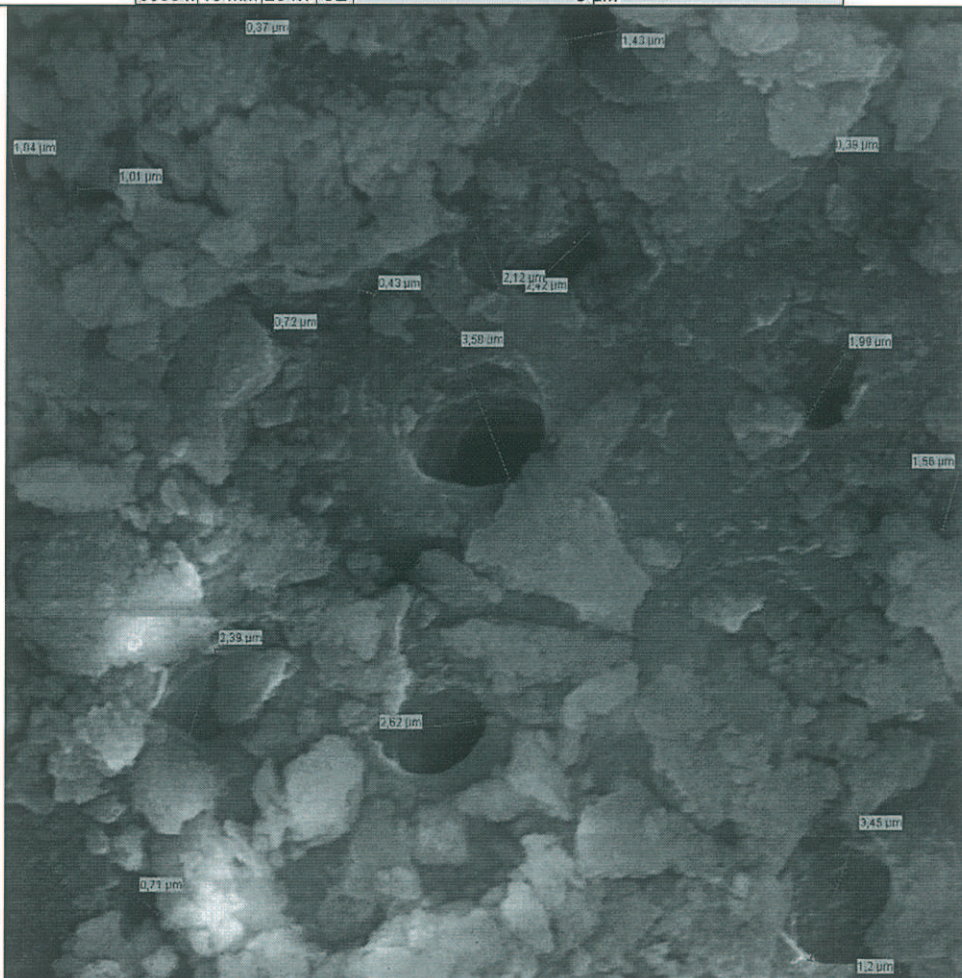
5 μm

**DIENTE # 28
TERCIO MEDIO**



Mag	WD	HV	Det
3000 x	16 mm	20 kV	SE

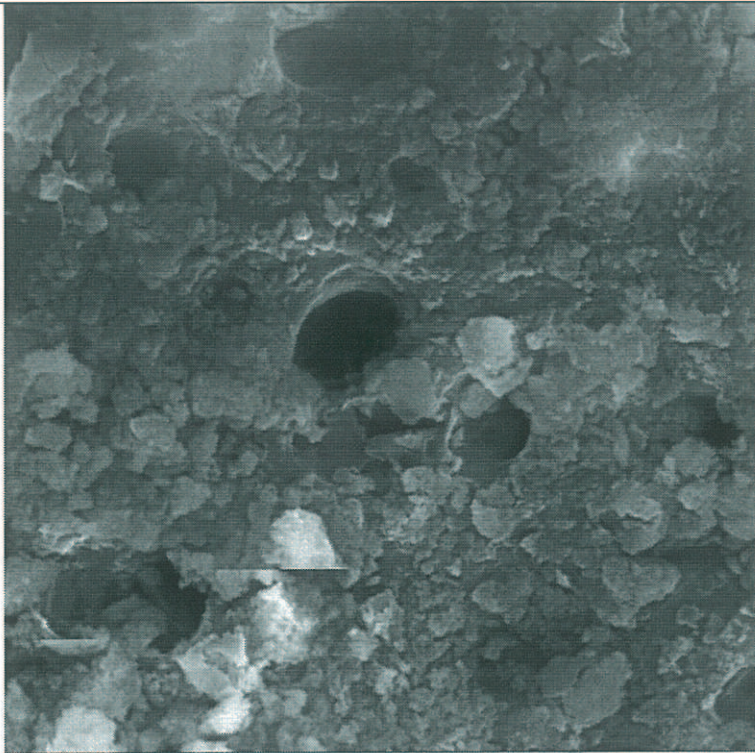
5 µm



Mag	WD	HV	Det
3000 x	16 mm	20 kV	SE

5 µm

**DIENTE # 28
TERCIO APICAL**



Mag	WD	HV	Det
3000 x	15 mm	20 kV	SE

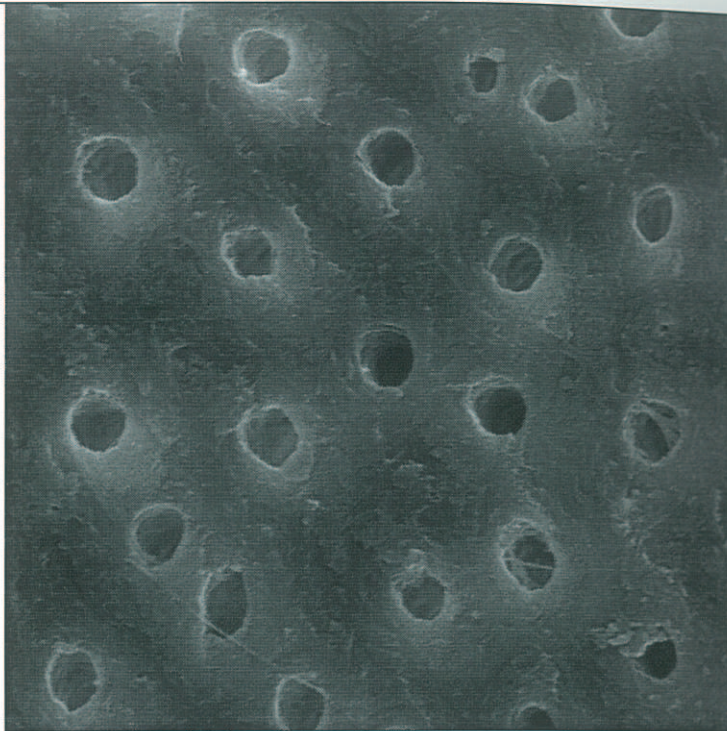
5 μ m



Mag	WD	HV	Det
3000 x	15 mm	20 kV	SE

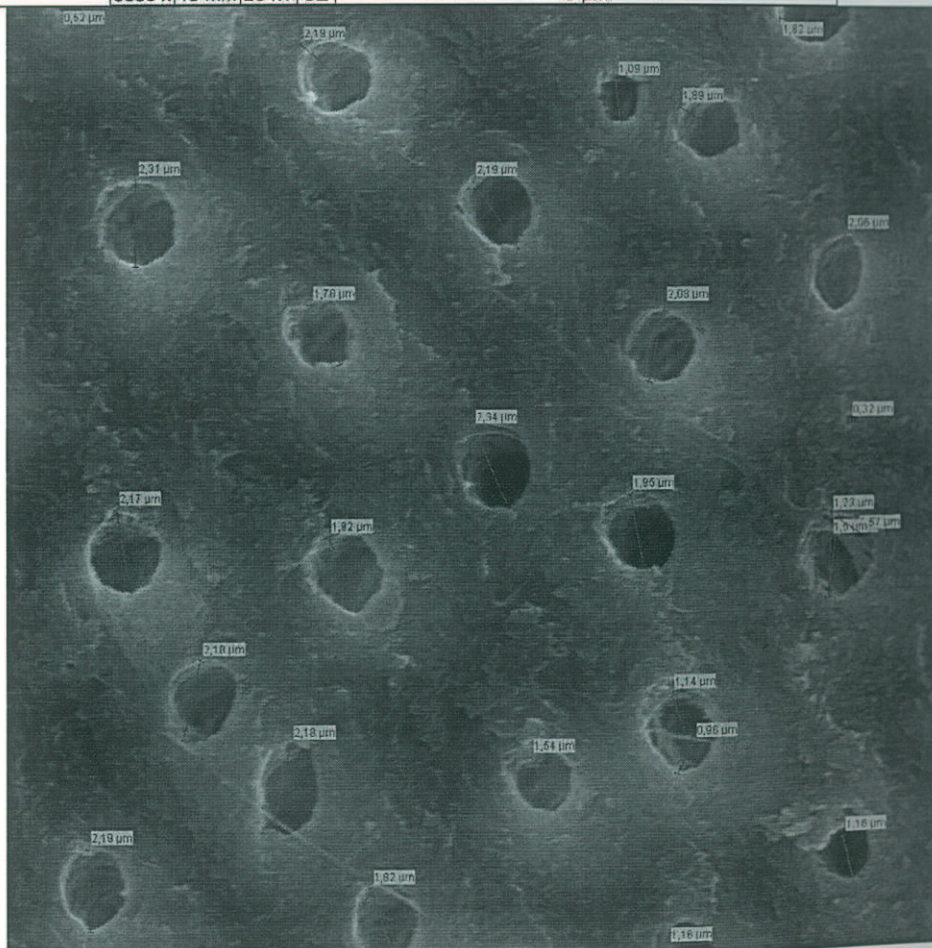
5 μ m

DIENTE #2 9
TERCIO CERVICAL



Mag	WD	HV	Det
3000 x	15 mm	20 kV	SE

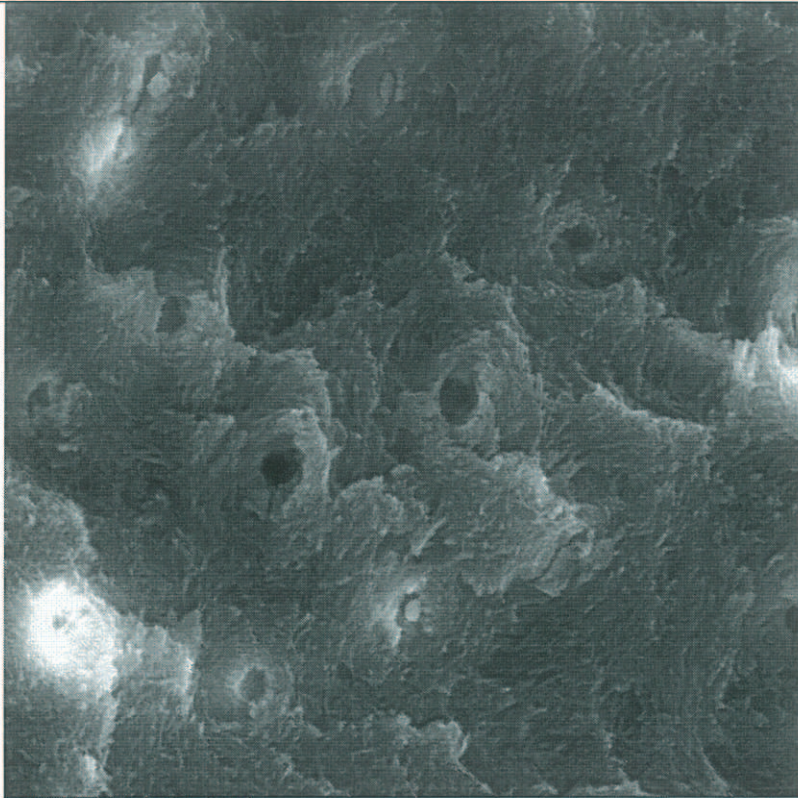
5 μ m



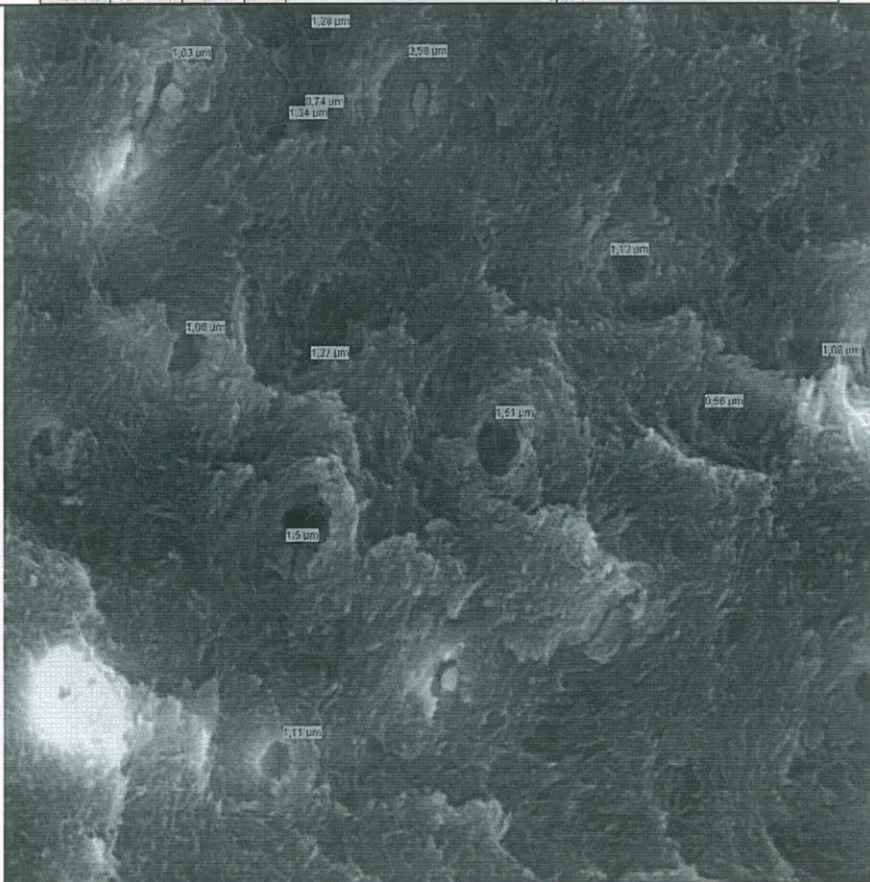
Mag	WD	HV	Det
3000 x	15 mm	20 kV	SE

5 μ m

**DIENTE #29
TERCIO MEDIO**

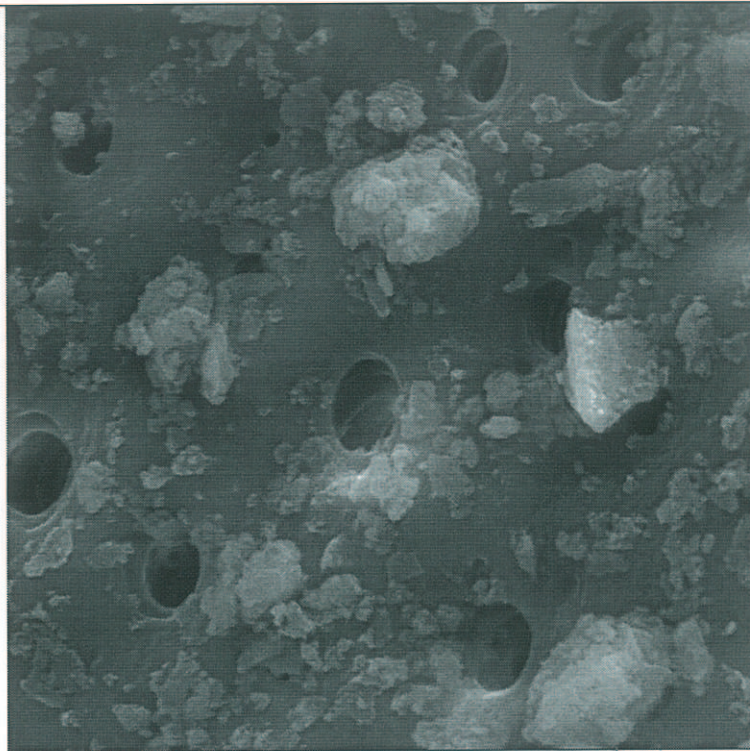


Mag	WD	HV	Det	
3000 x	15 mm	20 kV	SE	5 μ m

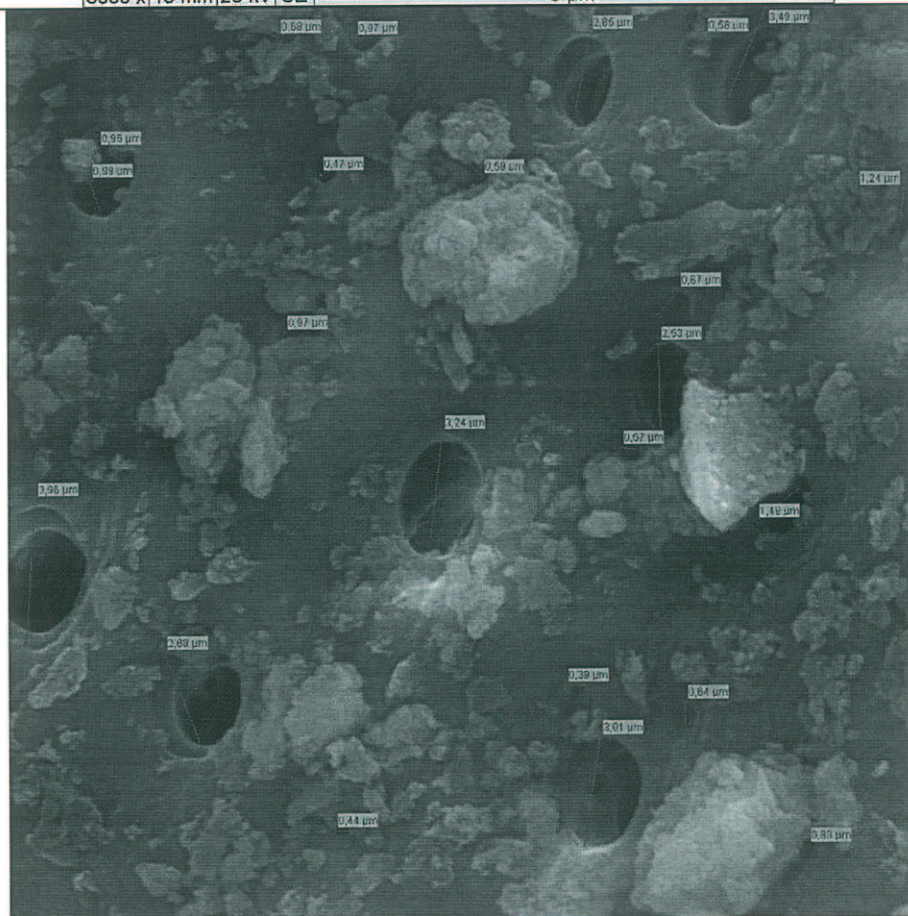


Mag	WD	HV	Det	
3000 x	15 mm	20 kV	SE	5 μ m

DIENTE # 29
TERCIO APICAL

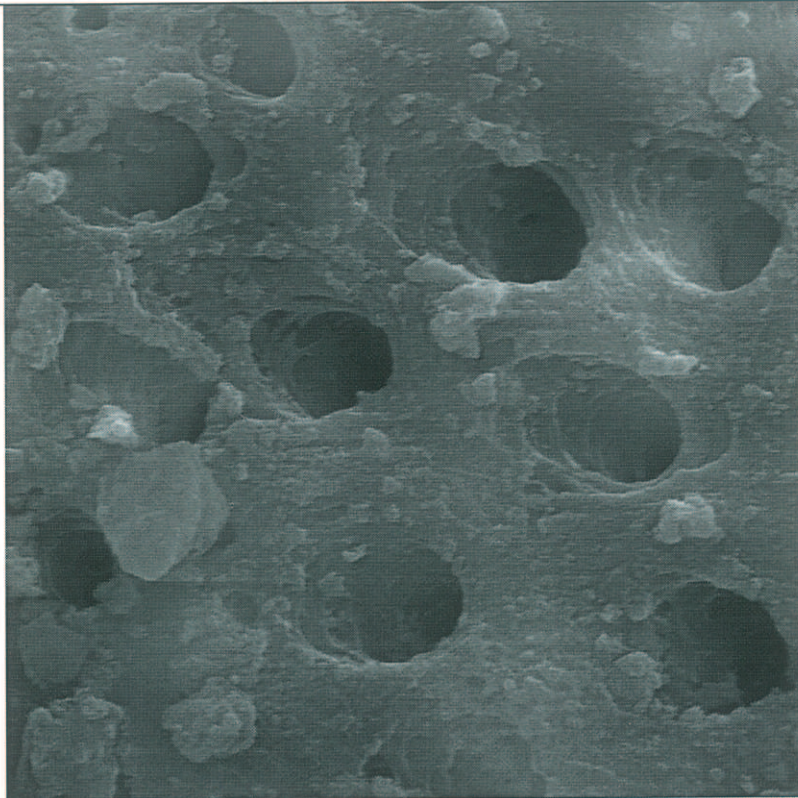


Mag	WD	HV	Det	
3000 x	15 mm	20 kV	SE	5 μ m



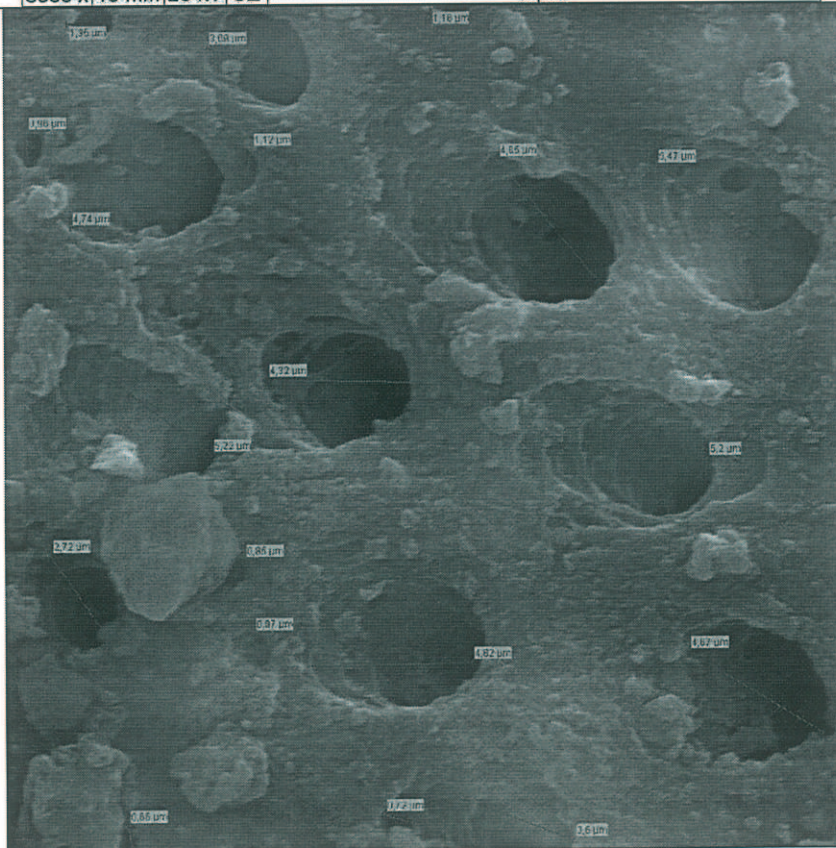
Mag	WD	HV	Det	
3000 x	15 mm	20 kV	SE	5 μ m

**DIENTE # 30
TERCIO CERVICAL**



Mag	WD	HV	Det
3000 x	16 mm	20 kV	SE

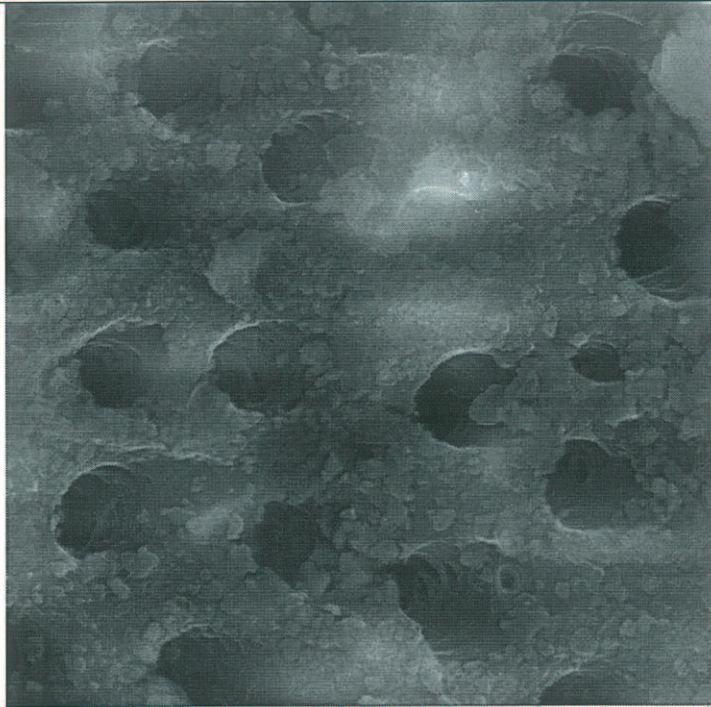
5 μ m



Mag	WD	HV	Det
3000 x	16 mm	20 kV	SE

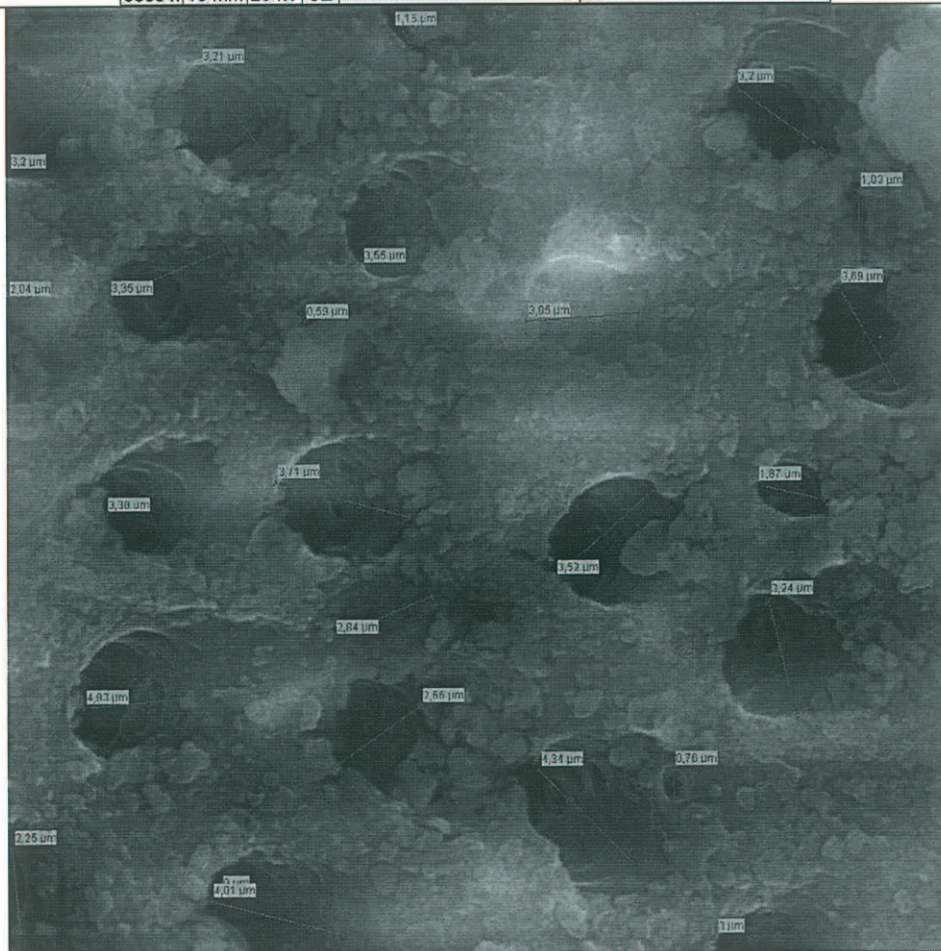
5 μ m

**DIENTE # 30
TERCIO MEDIO**



Mag	WD	HV	Det
3000 x	16 mm	20 kV	SE

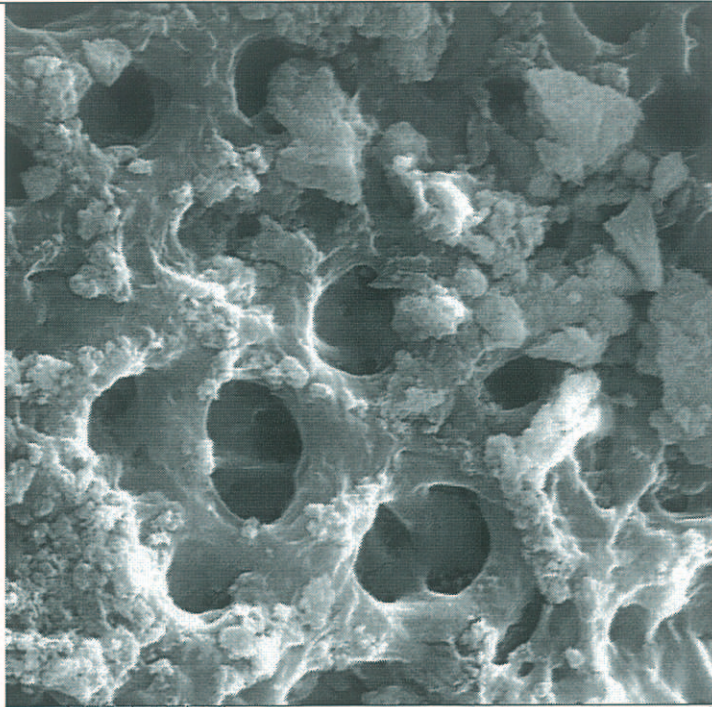
— 5 μ m —



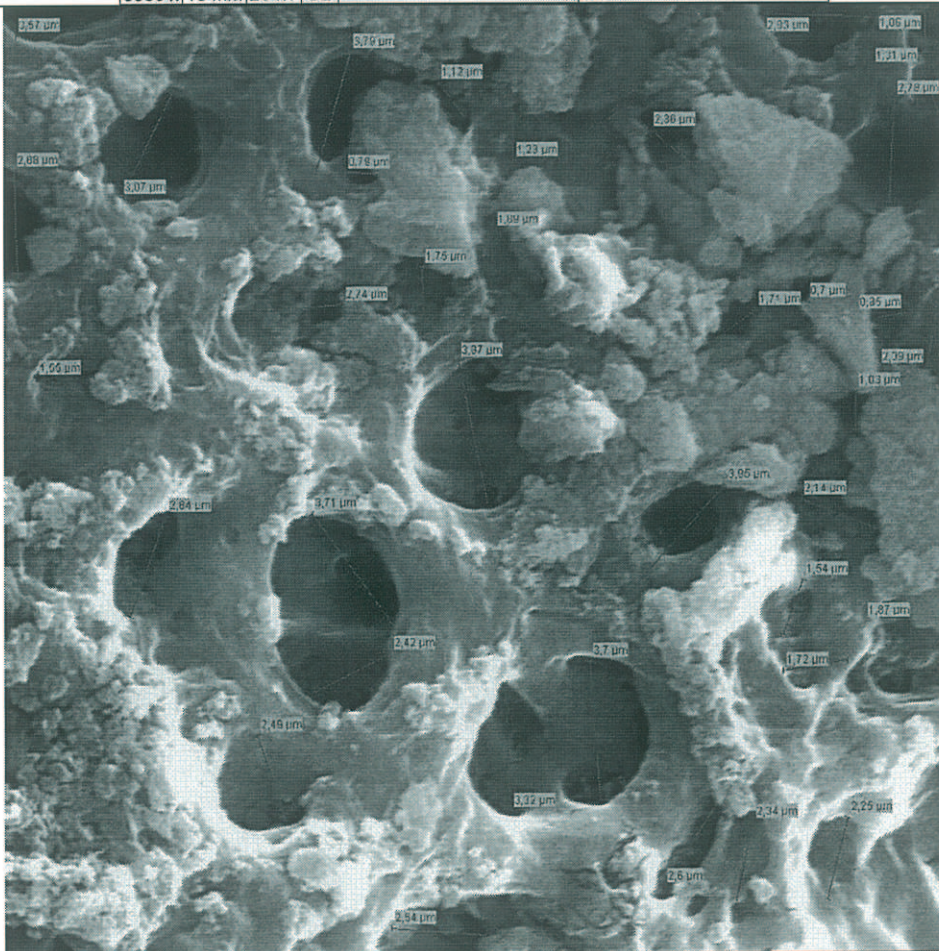
Mag	WD	HV	Det
3000 x	16 mm	20 kV	SE

— 5 μ m —

**DIENTE # 30
TERCIO APICAL**



Mag	WD	HV	Det	
3000 x	16 mm	20 kV	SE	— 5 µm —



Mag	WD	HV	Det	
3000 x	16 mm	20 kV	SE	— 5 µm —

Anexo# 3 Áreas de túbulos dentinarios abiertos

ANEXO # 3 CONTEO ESTADÍSTICO DE ÁREAS DE LOS TÚBULOS DENTINARIOS

GRUPO A SUERO FISIOLÓGICO		DIAMETROS		RADIOS		ÁREAS					
DIENTE 1		DIAMETROS		RADIOS		ÁREAS					
		CERVICAL	MEDIO	APICAL	CERVICAL	MEDIO	APICAL	CERVICAL	MEDIO	APICAL	
		2,25		1,67	1,125		0,835	3,9760782		2,190397	
		1,26		1,14	0,63		0,57	1,2468981		1,020703	
		1,43		1,43	0,715		0,715	1,6060607		1,606061	
		1,73		0,91	0,865		0,455	2,3506182		0,650388	
		0,76		1,04	0,38		0,52	0,453646		0,849487	
		1,18		1,47	0,59		0,735	1,0935884		1,697167	
		2,47			1,235			4,7916357			
		1,34			0,67			1,4102609			
		1,42			0,71			1,5836769			
		1,33			0,665			1,3892908			
		1,31			0,655			1,3478218			
		1,58			0,79			1,960668			
		1,46			0,73			1,6741547			
		1,3			0,65			1,3273229			
		1,48			0,74			1,7203361			
		1,56			0,78			1,911345			
		1,3			0,65			1,3273229			
		1,72			0,86			2,3235219			
		1,53			0,765			1,8385386			
		0,93			0,465			0,6792909			
		1,23			0,615			1,1882289			
		1,3			0,65			1,3273229			
		1,34			0,67			1,4102609			
		0,64			0,32			0,3216991			
		1,25			0,625			1,2271846			
								SUMA	42,876064	0	8,014203

DIENTE 4	1,58	0,89	0,49						0,79	0,445	0,245		1,960668	0,622114	0,188574
	1,69	0,94	0,66					0,845	0,47	0,33			2,2431757	0,693978	0,342119
	0,97	0,86	0,63					0,485	0,43	0,315			0,7389811	0,58088	0,311725
	0,96	0,72	0,32					0,48	0,36	0,16			0,7238229	0,40715	0,080425
	1,43	0,71	0,64					0,715	0,355	0,32			1,6060607	0,395919	0,321699
	1,33	0,58						0,665	0,29				1,3892908	0,264208	
	1,56	1,2						0,78	0,6				1,911345	1,130973	
	1,5	1,31						0,75	0,655				1,7671459	1,347822	
	1,26	0,84						0,63	0,42				1,2468981	0,554177	
	1,74							0,87					2,3778715		
	2,18							1,09					3,7325262		
	1,11							0,555					0,9676891		
	1,28							0,64					1,2867964		
	0,75							0,375					0,4417865		
	1,29							0,645					1,3069811		
	1,47							0,735					1,6971669		
	1,67							0,835					2,1903969		
1,06							0,53					0,8824734			
													SUMA	5,997222	1,244542
													28,471076	5,997222	1,244542

DIENTE 5	1,2	0,52	0,69					0,6	0,26	0,345			1,1309734	0,212372	0,373928	
	0,64	0,48	0,68					0,32	0,24	0,34			0,3216991	0,180956	0,363168	
	1,26	0,42	0,49					0,63	0,21	0,245			1,2468981	0,138544	0,188574	
	1,1	0,34	0,72					0,55	0,17	0,36			0,9503318	0,090792	0,40715	
	1,38	0,32						0,69	0,16				1,4957123	0,080425		
	0,97	0,39						0,485	0,195				0,7389811	0,119459		
	0,84							0,42					0,5541769			
														SUMA	6,4387727	1,332821
														28,471076	5,997222	1,244542

GRUPO B ACIDO CITRICO												
DIÁMETROS		RADIO		ÁREAS		RADIO		ÁREAS		RADIO		
DIENTE 6	CERVICAL	MEDIO	APICAL	CERVICAL	MEDIO	APICAL	CERVICAL	MEDIO	APICAL	CERVICAL	MEDIO	APICAL
	2,74	0,57	1,74	1,37	0,285	0,87	5,896455252	0,255176	2,377871			
	1,29	1,58	2,83	0,645	0,79	1,415	1,306981084	1,960668	6,290175			
	3,68	1,75	1,9	1,84	0,875	0,95	10,63617609	2,405282	2,835287			
	3,24	2,52	1,23	1,62	1,26	0,615	8,24479576	4,987592	1,188229			
	3,73	2,5	3,08	1,865	1,25	1,54	10,92716611	4,908739	7,450601			
	4,54	2,75	2,21	2,27	1,375	1,105	16,18831278	5,939574	3,835963			
	3,58	1,85	0,62	1,79	0,925	0,31	10,06597702	2,688025	0,301907			
	3,78	2,22	0,87	1,89	1,11	0,435	11,22208312	3,870756	0,594468			
	3,81	1,19	0,44	1,905	0,595	0,22	11,40091828	1,112202	0,152053			
	2,48	1,54	3,15	1,24	0,77	1,575	4,830512864	1,86265	7,793113			
	1,1	1,23	4,06	0,55	0,615	2,03	0,950331778	1,188229	12,94619			
	0,88	1,98	1,22	0,44	0,99	0,61	0,608212338	3,079075	1,168987			
	3,54	1,54	1,38	1,77	0,77	0,69	9,842295624	1,86265	1,495712			
			3,12			1,56			7,64538			
			2,11			1,055			3,496671			
							SUMA			102,1202181	36,12062	59,57261
										102,1202181	36,12062	59,57261

DIENTE 7	3,9	4,42	0,96	1,95	2,21	0,48	11,94590607	15,34385	0,723823			
	3,63	3,79	1,47	1,815	1,895	0,735	10,34911306	11,28154	1,697167			
	3,13	3,05	1,78	1,565	1,525	0,89	7,694467267	7,306166	2,488456			
	4,62	3,05	1,44	2,31	1,525	0,72	16,76385256	7,306166	1,628602			
	4,93	3,07	1,58	2,465	1,535	0,79	19,08902382	7,402299	1,960668			
	3,84	3,72	0,28	1,92	1,86	0,14	11,58116716	10,86865	0,061575			
	1,06	3,13	2,3	0,53	1,565	1,15	0,882473376	7,694467	4,154756			
	4,94	2,82	1,34	2,47	1,41	0,67	19,16654262	6,2458	1,410261			
	7,71		1,97	3,855		0,985	46,68728696		3,048052			

DIENTE 9			2,25	2,84		1,125	1,42	1,14		3,976078202	6,334707	4,082814
	3,47	3,73	0,64	1,865	1,735	1,865	0,32	0,32		9,456900746	10,92717	0,321699
	3,16	4,6	1,87	1,58	1,58	2,3	0,935	0,935		7,8426719	16,61903	2,746459
	3,03	3,53	0,37	1,515	1,515	1,765	0,185	0,185		7,210661998	9,786768	0,107521
	2,76	3,91	1,95	1,38	1,38	1,955	0,975	0,975		5,982849049	12,00725	2,986477
	3,16	3,11	2,7	1,58	1,58	1,555	1,35	1,35		7,8426719	7,59645	5,725553
	3,68	3,39	0,33	1,84	1,84	1,695	0,165	0,165		10,63617609	9,025874	0,08553
	2,4	3,32	1,94	1,2	1,2	1,66	0,97	0,97		4,523893421	8,656973	2,955925
	3,06	3,66		1,53	1,53	1,83				7,354154243	10,52088	
	2,14	1,89		1,07	1,07	0,945				3,596809429	2,805521	
		2,79				1,395					6,113618	
		4,07				2,035					13,01004	
		3,78				1,89					11,22208	
		2,84				1,42					6,334707	
		3,26				1,63					8,346898	
		3,23				1,615					8,19398	
		3,25				1,625					8,295768	
		3,51				1,755					9,676184	
		2,6				1,3					5,309292	
		3,01				1,505					7,115786	
		3,6				1,8					10,17876	
		1,23				0,615					1,188229	
		2,73				1,365					5,853494	
		3,32				1,66					8,656973	
		2,67				1,335					5,599025	
		2,99				1,495					7,021538	
		3,05				1,525					7,306166	
									SUMA	68,42286698	223,7032	19,01198
										68,42286698	223,7032	19,01198

DIENTE 10	2,41	2,42	3,08		1,205	1,21	1,54	4,561671073	4,599606	7,450601
	2,84	4,08	2,72		1,42	2,04	1,36	6,334707427	13,07405	5,81069
	3,03	2,48	2,72		1,515	1,24	1,36	7,210661998	4,830513	5,81069
	2,96	3,82	3,87		1,48	1,91	1,935	6,881344548	11,46084	11,76283
	2,07	3,81	3,66		1,035	1,905	1,83	3,36535259	11,40092	10,52088
	2,82		1,67		1,41		0,835	6,245800355		2,190397
	2,9		3,17		1,45		1,585	6,605198554		7,892388
	2,6		0,32		1,3		0,16	5,309291585		0,080425
	2,43		0,63		1,215		0,315	4,637697615		0,311725
	2,6		4,44		1,3		2,22	5,309291585		15,48303
	1,87		2,83		0,935		1,415	2,746458838		6,290175
	2,43		2,09		1,215		1,045	4,637697615		3,430698
	2,27				1,135			4,047078196		
	2,66				1,33			5,557163245		
	2,54				1,27			5,067074791		
	1,98				0,99			3,07907496		
	2,23				1,115			3,905706527		
	2,82				1,41			6,245800355		
	2,85				1,425			6,379396582		
	2,56				1,28			5,147185404		
	2,48				1,24			4,830512864		
	2,13				1,065			3,563272928		
	1,89				0,945			2,805520779		
	2,29				1,145			4,118706509		
	3,24				1,62			8,24479576		
	2,36				1,18			4,374353611		
	2,35				1,175			4,337361357		
	2,7				1,35			5,725552611		
	2,12				1,06			3,529893506		
	2,32				1,16			4,227327075		
	1,85				0,925			2,688025214		
	2,13				1,065			3,563272928		
								SUMA	45,36593	77,03452
								158,4553361	45,36593	77,03452

GRUPO C EDTA 1 MUNUTO													
DIAMETROS		RADIO		ÁREAS		RADIO		ÁREAS		RADIO			
DIENTE 11		CERVICAL		MEDIO		APICAL		CERVICAL		MEDIO		APICAL	
2,08	1,29	2,53	1,04	0,645	1,265	3,3979466	1,306981	5,027255					
1,74	0,64	2,68	0,87	0,32	1,34	2,3778715	0,321699	5,641044					
2,34	0,96	3,04	1,17	0,48	1,52	4,3005262	0,723823	7,258336					
1,91	0,62	2,69	0,955	0,31	1,345	2,865211	0,301907	5,68322					
2,3	0,93	2,9	1,15	0,465	1,45	4,1547563	0,679291	6,605199					
1,69	1,16	1,22	0,845	0,58	0,61	2,2431757	1,056832	1,168987					
1,42	1,39	2,68	0,71	0,695	1,34	1,5836769	1,517468	5,641044					
1,97	1,53	2,75	0,985	0,765	1,375	3,0480517	1,838539	5,939574					
1,57	1,15	3,32	0,785	0,575	1,66	1,9359279	1,038689	8,656973					
2,13	1,08	2,49	1,065	0,54	1,245	3,5632729	0,916088	4,869547					
1,65	1,09	1,77	0,825	0,545	0,885	2,1382465	0,933132	2,460574					
1,52	1,62	2,65	0,76	0,81	1,325	1,8145839	2,061199	5,515459					
1,89	0,87	2,36	0,945	0,435	1,18	2,8055208	0,594468	4,374354					
1,31	0,82	2,86	0,655	0,41	1,43	1,3478218	0,528102	6,424243					
1,93	0,68	3,33	0,965	0,34	1,665	2,9255296	0,363168	8,709202					
1,8	1,72	2,18	0,9	0,86	1,09	2,54469	2,323522	3,732526					
1,85	1,64	3,2	0,925	0,82	1,6	2,6880252	2,112407	8,042477					
1,62	1,19	2,47	0,81	0,595	1,235	2,0611989	1,112202	4,791636					
1,99	0,63	2,27	0,995	0,315	1,135	3,1102553	0,311725	4,047078					
1,89	2,9	2,17	0,945	1,45	1,085	2,8055208	6,605199	3,698361					
2,23	0,95		1,115	0,475		3,9057065	0,708822						
2,53	1,4		1,265	0,7		5,0272551	1,53938						
2,22	1,51		1,11	0,755		3,8707563	1,790786						
2,42	1,38		1,21	0,69		4,5996058	1,495712						
2,32	2,37		1,16	1,185		4,2273271	4,411503						
3,27	1,99		1,635	0,995		8,398184	3,110255						
2,14	1,15		1,07	0,575		3,5968094	1,038689						

	2,48	1,25	3,36	1,24	0,625	1,68		4,8305129	1,227185	8,866831
	2,46	0,89	2,08	1,23	0,445	1,04		4,7529155	0,622114	3,397947
	2,76		1,67	1,38		0,835		5,982849		2,190397
			1,83			0,915				2,63022
			3,1			1,55				7,547676
							SUMA	104,62776	55,36107	70,59528
								104,62776	55,36107	70,59528

DIENTE 13										
	2,33	2,47	0,74	1,165	1,235	0,37		4,2638481	4,791636	0,430084
	2,24	1,42	0,75	1,12	0,71	0,375		3,9408138	1,583677	0,441786
	2,19	1,43	2,41	1,095	0,715	1,205		3,7668481	1,606061	4,561671
	2,65	2,72	2,18	1,325	1,36	1,09		5,5154586	5,81069	3,732526
	2,36	2,4	3,39	1,18	1,2	1,695		4,3743536	4,523893	9,025874
	2,25	2,99	3,26	1,125	1,495	1,63		3,9760782	7,021538	8,346898
	1,99	2,34	2,08	0,995	1,17	1,04		3,1102553	4,300526	3,397947
	2,63	2,19	0,74	1,315	1,095	0,37		5,4325206	3,766848	0,430084
	1,95	2,73	0,71	0,975	1,365	0,355		2,9864765	5,853494	0,395919
	2,21	2,83	1,65	1,105	1,415	0,825		3,8359632	6,290175	2,138246
	2,19	2,14		1,095	1,07			3,7668481	3,596809	
	2,47	2,9		1,235	1,45			4,7916357	6,605199	
	2,06	1,84		1,03	0,92			3,3329156	2,659044	
	2,08	2,8		1,04	1,4			3,3979466	6,157522	
	2,28	0,7		1,14	0,35			4,0828138	0,384845	
	2,39	2,69		1,195	1,345			4,4862728	5,68322	
	2,08	1,91		1,04	0,955			3,3979466	2,865211	
		1,73			0,865				2,350618	
		1,94			0,97				2,955925	
		1,01			0,505				0,801185	
							SUMA	68,458995	79,60811	32,90104

DIENTE 15												
	2,03	0,95	1,47		1,015	0,475	0,735			3,2365473	0,708822	1,697167
	2,14	1,27	1,73		1,07	0,635	0,865			3,5968094	1,266769	2,350618
	1,91	1,65	1,79		0,955	0,825	0,895			2,865211	2,138246	2,516494
	1,97	1,37	0,45		0,985	0,685	0,225			3,0480517	1,474114	0,159043
	1,57	1,53	1,51		0,785	0,765	0,755			1,9359279	1,838539	1,790786
	2,6	1,67	0,86		1,3	0,835	0,43			5,3092916	2,190397	0,58088
	2,38	1,94	1,06		1,19	0,97	0,53			4,4488094	2,955925	0,882473
	2,01	0,96	1,37		1,005	0,48	0,685			3,1730871	0,723823	1,474114
	1,35	1,45	1,15		0,675	0,725	0,575			1,4313882	1,6513	1,038689
	1,53	1,97			0,765	0,985				1,8385386	3,048052	
	2,17	1,18			1,085	0,59				3,6983614	1,093588	
	1,89	1,47			0,945	0,735				2,8055208	1,697167	
	2,57	1,54			1,285	0,77				5,1874763	1,86265	
	2,58	1,19			1,29	0,595				5,2279243	1,112202	
	1,49	1,9			0,745	0,95				1,7436625	2,835287	
	2,21	1,13			1,105	0,565				3,8359632	1,002875	
	1,65	1,36			0,825	0,68				2,1382465	1,452672	
	1,15	1,83			0,575	0,915				1,0386891	2,63022	
	2,28	2,38			1,14	1,19				4,0828138	4,448809	
	1,92	1,56			0,96	0,78				2,8952918	1,911345	
	2,22	2,2			1,11	1,1				3,8707563	3,801327	
	2,29	1,36			1,145	0,68				4,1187065	1,452672	
	2,44	1,33			1,22	0,665				4,6759465	1,389291	
	1,8	1,56			0,9	0,78				2,54469	1,911345	
		1,89				0,945					2,805521	
		2,52				1,26					4,987592	
		2,56				1,28					5,147185	
		2,1				1,05					3,463606	
		2,01				1,005					3,173087	
		2,07				1,035					3,365353	
		1,11				0,555					0,967689	
										SUMA	98,858695	12,49027